


Anti-ch TOG antibody ab86073

7 References [画像数 2](#)

製品の概要

製品名	Anti-ch TOG antibody
製品の詳細	Rabbit polyclonal to ch TOG
由来種	Rabbit
アプリケーション	適用あり: WB, IP
種交差性	交差種: Mouse, Human 交差が予測される動物種: Rat, Rabbit, Horse, Chicken, Guinea pig, Cow, Dog, Turkey, Pig, Xenopus laevis, Chimpanzee, Rhesus monkey, Gorilla, Orangutan, Xenopus tropicalis 
免疫原	Synthetic peptide corresponding to Human ch TOG. Database link: Q14008
ポジティブ・コントロール	HeLa whole cell lysate (ab150035), NIH3T3 cell lysate
特記事項	<p>The Life Science industry has been in the grips of a reproducibility crisis for a number of years. Abcam is leading the way in addressing this with our range of recombinant monoclonal antibodies and knockout edited cell lines for gold-standard validation. Please check that this product meets your needs before purchasing.</p> <p>If you have any questions, special requirements or concerns, please send us an inquiry and/or contact our Support team ahead of purchase. Recommended alternatives for this product can be found below, along with publications, customer reviews and Q&As</p>

製品の特性

製品の状態	Liquid
保存方法	Shipped at 4°C. Upon delivery aliquot and store at -20°C. Avoid freeze / thaw cycles.
バッファー	pH: 6.8 Preservative: 0.09% Sodium azide Constituents: 0.1% BSA, Tris buffered saline
精製度	Immunogen affinity purified
ポリ/モノ	ポリクローナル
アイソタイプ	IgG

アプリケーション

The Abpromise guarantee **Abpromise保証は、次のテスト済みアプリケーションにおけるab86073の使用に適用されます**
 アプリケーションノートには、推奨の開始希釈率がありますが、適切な希釈率につきましてはご検討ください。

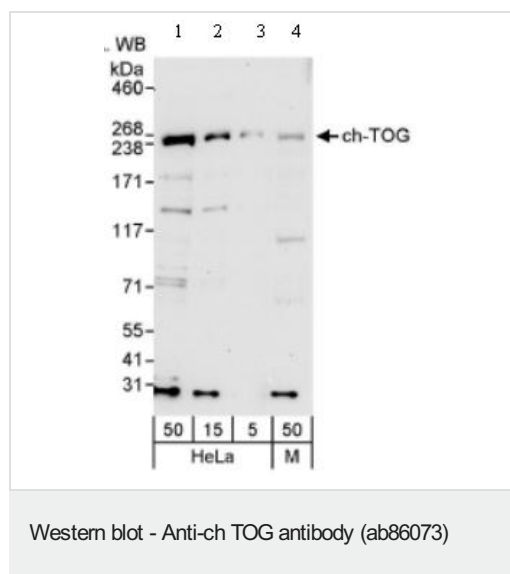
アプリケーション	Abreviews	特記事項
WB		1/2000 - 1/10000. Predicted molecular weight: 218 kDa.
IP		Use at 2-5 µg/mg of lysate.

ターゲット情報

関連性 ch-TOG (also known as colonic and hepatic tumor over-expressed protein) is a 218 kD member of the TOG/XMAP215 family containing heat repeats. This protein is localized in the perinuclear cytoplasm during interphase and at the spindle poles and centrosomes during mitosis. Ch-TOG is believed to function in spindle microtubule organization and has been shown to interact with TACC1, TACC3, and tubulin.

細胞内局在 Localized in the perinuclear cytoplasm during interphase and at the spindle poles and centrosomes during mitosis

画像



All lanes : Anti-ch TOG antibody (ab86073) at 0.04 µg/ml

Lane 1 : HeLa whole cell lysate at 50 µg

Lane 2 : HeLa whole cell lysate at 15 µg

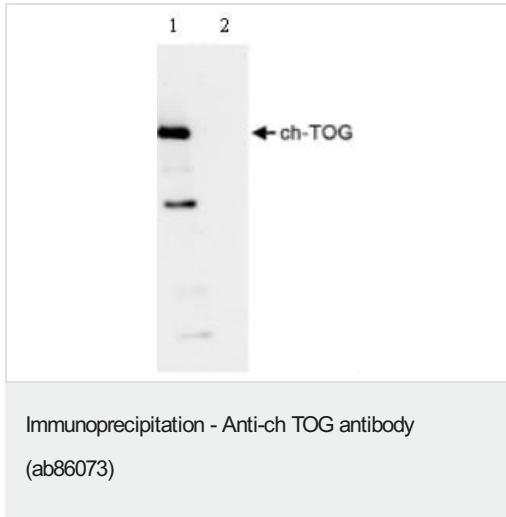
Lane 3 : HeLa whole cell lysate at 5 µg

Lane 4 : mouse NIH3T3 cell lysate at 50 µg

Developed using the ECL technique.

Predicted band size: 218 kDa

Exposure time: 30 seconds



Immunoprecipitation/ Western Blot of ab86073. Lane 1: ab86073 at 3µg/mg whole cell lysate. Lane 2: Control IgG. ab86073 at 1µg/ml for WB. Whole cell lysate from Hela cells at 1mg for IP, 20% of IP loaded. Chemiluminescence with an exposure time of 3 seconds.

Please note: All products are "FOR RESEARCH USE ONLY. NOT FOR USE IN DIAGNOSTIC PROCEDURES"

Our Abpromise to you: Quality guaranteed and expert technical support

- Replacement or refund for products not performing as stated on the datasheet
- Valid for 12 months from date of delivery
- Response to your inquiry within 24 hours
- We provide support in Chinese, English, French, German, Japanese and Spanish
- Extensive multi-media technical resources to help you
- We investigate all quality concerns to ensure our products perform to the highest standards

If the product does not perform as described on this datasheet, we will offer a refund or replacement. For full details of the Abpromise, please visit <https://www.abcam.co.jp/abpromise> or contact our technical team.

Terms and conditions

- Guarantee only valid for products bought direct from Abcam or one of our authorized distributors