

### CF405M Anti-CD105 antibody [2H6F11], prediluted ab123634

画像数 1

#### 製品の概要

製品名	CF405M Anti-CD105 antibody [2H6F11], prediluted
製品の詳細	CF405M Mouse monoclonal [2H6F11] to CD105, prediluted
由来種	Mouse
標識	CF405M. Ex: 408nm, Em: 452nm
アプリケーション	適用あり: Flow Cyt
種交差性	交差種: Human
免疫原	Recombinant full length protein corresponding to CD105. Human Endoglin fusion protein.
ポジティブ・コントロール	Nalm-6 cell line
特記事項	<p>CD105 is a component of the TGF-B receptor system and can bind TGF-B1 and TGF-B3 with high affinity but does not bind TGF-B2. CD105 is expressed by vascular endothelial cells and syncytiotrophoblasts of placenta, Pre-B cells in fetal marrow, erythroid precursors in fetal and adult bone marrow and is weakly expressed by stromal fibroblasts. U937 cells and monocytes and tissue macrophages also expresses weakly CD105. Expression of CD105 is increased on activated endothelium in tissues undergoing angiogenesis, such as in tumours, or in cases of wound healing or dermal inflammation.</p> <p>CF405M (Abs/Em Max: 408/450nm). Direct replacement for Pacific Blue dye®, BD Horizon™ V450.</p> <p>The Life Science industry has been in the grips of a reproducibility crisis for a number of years. Abcam is leading the way in addressing this with our range of recombinant monoclonal antibodies and knockout edited cell lines for gold-standard validation. Please check that this product meets your needs before purchasing.</p> <p>If you have any questions, special requirements or concerns, please send us an inquiry and/or contact our Support team ahead of purchase. Recommended alternatives for this product can be found below, along with publications, customer reviews and Q&amp;As</p>

#### 製品の特性

製品の状態	Liquid
保存方法	Shipped at 4°C. Store at +4°C.
バッファー	pH: 7.20

	Preservative: 0.09% Sodium azide
精製度	Immunogen affinity purified
一次抗体 備考	CD105 is a component of the TGF-B receptor system and can bind TGF-B1 and TGF-B3 with high affinity but does not bind TGF-B2. CD105 is expressed by vascular endothelial cells and syncytiotrophoblasts of placenta, Pre-B cells in fetal marrow, erythroid precursors in fetal and adult bone marrow and is weakly expressed by stromal fibroblasts. U937 cells and monocytes and tissue macrophages also expresses weakly CD105. Expression of CD105 is increased on activated endothelium in tissues undergoing angiogenesis, such as in tumours, or in cases of wound healing or dermal inflammation.
ポリ/モノ	モノクローナル
クローン名	2H6F11
アイソタイプ	IgG1

## アプリケーション

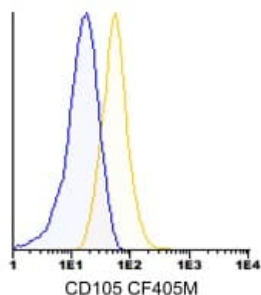
**The Abpromise guarantee**      **Abpromise保証は、**次のテスト済みアプリケーションにおけるab123634の使用に適用されます  
 アプリケーションノートには、推奨の開始希釈率がありますが、適切な希釈率につきましてはご検討ください。

アプリケーション	Abreviews	特記事項
Flow Cyt		Use 5µl for 10 <sup>6</sup> cells. <b>ab126026</b> - Mouse monoclonal IgG1, is suitable for use as an isotype control with this antibody.

## ターゲット情報

機能	Major glycoprotein of vascular endothelium. May play a critical role in the binding of endothelial cells to integrins and/or other RGD receptors.
組織特異性	Endoglin is restricted to endothelial cells in all tissues except bone marrow.
関連疾患	Defects in ENG are the cause of hereditary hemorrhagic telangiectasia type 1 (HHT1) [MIM:187300, 108010]; also known as Osler-Rendu-Weber syndrome 1 (ORW1). HHT1 is an autosomal dominant multisystemic vascular dysplasia, characterized by recurrent epistaxis, muco-cutaneous telangiectases, gastro-intestinal hemorrhage, and pulmonary (PAVM), cerebral (CAVM) and hepatic arteriovenous malformations; all secondary manifestations of the underlying vascular dysplasia. Although the first symptom of HHT1 in children is generally nose bleed, there is an important clinical heterogeneity.
細胞内局在	Membrane.

## 画像



Staining of Nalm-6 cell line with ab123634 at 5  $\mu$ l/ $10^6$  cells and isotype control IgG1 CFBlue. Total cells were used for analysis.

Flow Cytometry - CF405M Anti-CD105 antibody  
[2H6F11], prediluted (ab123634)

**Please note:** All products are "FOR RESEARCH USE ONLY. NOT FOR USE IN DIAGNOSTIC PROCEDURES"

### Our Abpromise to you: Quality guaranteed and expert technical support

- Replacement or refund for products not performing as stated on the datasheet
- Valid for 12 months from date of delivery
- Response to your inquiry within 24 hours
- We provide support in Chinese, English, French, German, Japanese and Spanish
- Extensive multi-media technical resources to help you
- We investigate all quality concerns to ensure our products perform to the highest standards

If the product does not perform as described on this datasheet, we will offer a refund or replacement. For full details of the Abpromise, please visit <https://www.abcam.co.jp/abpromise> or contact our technical team.

### Terms and conditions

- Guarantee only valid for products bought direct from Abcam or one of our authorized distributors