




### Anti-CETP antibody [ATM192] ab2726

★★★★★ [3 Abreviews](#) [4 References](#) [画像数 2](#)

#### 製品の概要

製品名	Anti-CETP antibody [ATM192]
製品の詳細	Mouse monoclonal [ATM192] to CETP
由来種	Mouse
特異性	Detects cholesteryl ester transfer protein (CETP) from human and rabbit tissues.
アプリケーション	<b>適用あり:</b> ICC/IF, WB
種交差性	<b>交差種:</b> Human <b>交差が予測される動物種:</b> Cynomolgus monkey 
免疫原	Synthetic peptide corresponding to Human CETP aa 149-159. Sequence: CDSGRVRTDAPD <div>  <a href="#">Run BLAST with</a>  <a href="#">Run BLAST with</a> </div>
特記事項	<p>The Life Science industry has been in the grips of a reproducibility crisis for a number of years. Abcam is leading the way in addressing this with our range of recombinant monoclonal antibodies and knockout edited cell lines for gold-standard validation. Please check that this product meets your needs before purchasing.</p> <p>If you have any questions, special requirements or concerns, please send us an inquiry and/or contact our Support team ahead of purchase. Recommended alternatives for this product can be found below, along with publications, customer reviews and Q&amp;As</p>

#### 製品の特性

製品の状態	Liquid
保存方法	Shipped at 4°C. Store at +4°C short term (1-2 weeks). Upon delivery aliquot. Store at -20°C or -80°C. Avoid freeze / thaw cycle.
バッファー	Preservative: 0.05% Sodium azide Constituent: PBS
精製度	Protein A purified
特記事項(精製)	Purified from TCS
ポリモノ	モノクローナル
クローン名	ATM192

アプリケーション

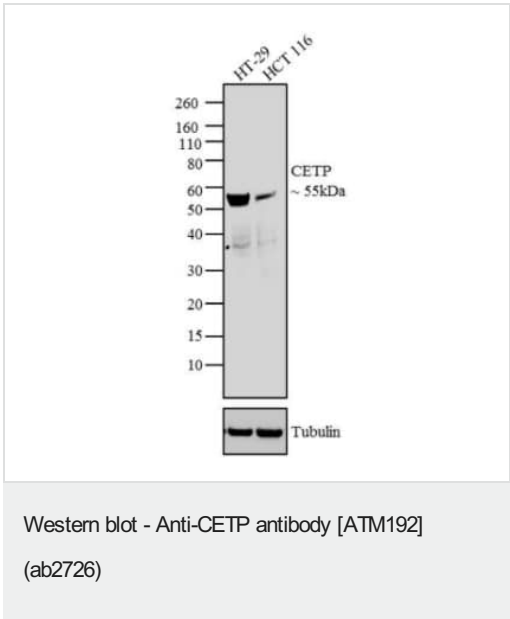
The Abpromise guarantee      **Abpromise保証は、** 次のテスト済みアプリケーションにおけるab2726の使用に適用されます  
アプリケーションノートには、推奨の開始希釈率がありますが、適切な希釈率につきましてはご確認ください。

アプリケーション	Abreviews	特記事項
ICC/IF		1/20.
WB	★★★★★ (3)	Use a concentration of 2 µg/ml. Predicted molecular weight: 55 kDa.

ターゲット情報

機能	Involved in the transfer of insoluble cholesteryl esters in the reverse transport of cholesterol.
組織特異性	Expressed by the liver and secreted in plasma.
関連疾患	Defects in CETP are a cause of hyperalphalipoproteinemia (HYPALIP) [MIM:143470]. Affected individuals show high levels of alpha-lipoprotein (high density lipoprotein/HDL). Defects in CETP are the cause of cholesteryl ester transfer protein deficiency (CETP deficiency) [MIM:607322]. This is an autosomal dominant condition associated with increased HDL cholesterol levels.
配列類似性	Belongs to the BPI/LBP/Plunc superfamily. BPI/LBP family.
細胞内局在	Secreted > extracellular space.

画像



**All lanes :** Anti-CETP antibody [ATM192] (ab2726) at 2 µg/ml

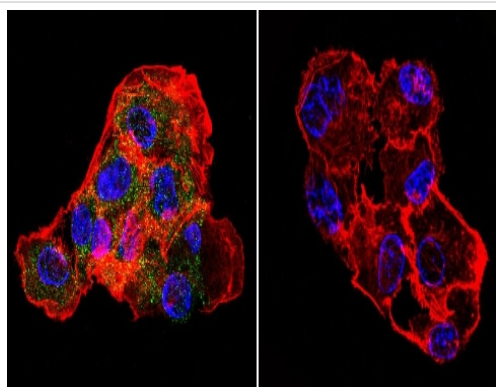
**Lane 1 :** HT-29 whole cell extracts

**Lane 2 :** HCT 116 whole cell extracts

**Secondary**

**All lanes :** Goat anti-Mouse IgG (H+L) Superclonal™ Secondary Antibody, HRP conjugate at 0.4 µg/ml

**Predicted band size:** 55 kDa



Immunocytochemistry/ Immunofluorescence - Anti-CETP antibody [ATM192] (ab2726)

Immunocytochemistry/Immunofluorescence analysis of CETP in HepG2 cells. Cells were grown on chamber slides and fixed with formaldehyde prior to staining. Cells were probed without (control) or with ab2726 (1:20) overnight at 4°C, washed with PBS and incubated with a DyLight-488 conjugated secondary antibody. CETP staining (green), F-Actin staining with Phalloidin (red) and nuclei with DAPI (blue) is shown. Images were taken at 60X magnification.

**Please note:** All products are "FOR RESEARCH USE ONLY. NOT FOR USE IN DIAGNOSTIC PROCEDURES"

### Our Abpromise to you: Quality guaranteed and expert technical support

---

- Replacement or refund for products not performing as stated on the datasheet
- Valid for 12 months from date of delivery
- Response to your inquiry within 24 hours
- We provide support in Chinese, English, French, German, Japanese and Spanish
- Extensive multi-media technical resources to help you
- We investigate all quality concerns to ensure our products perform to the highest standards

If the product does not perform as described on this datasheet, we will offer a refund or replacement. For full details of the Abpromise, please visit <https://www.abcam.co.jp/abpromise> or contact our technical team.

### Terms and conditions

---

- Guarantee only valid for products bought direct from Abcam or one of our authorized distributors