

Anti-CETP antibody ab19012

5 References [画像数 1](#)

製品の概要

製品名	Anti-CETP antibody
製品の詳細	Rabbit polyclonal to CETP
由来種	Rabbit
特異性	This antibody recognises CETB (70 kDa).
アプリケーション	適用あり: WB
種交差性	交差種: Human
免疫原	Synthetic peptide corresponding to Human CETP (N terminal). Immunogen is around amino acid 153. Database link: <u>P11597</u>
ポジティブ・コントロール	WB: Jurkat cell lysate
特記事項	<p>This product is manufactured by BioVision, an Abcam company and was previously called 3413 CETP Antibody. 3413-100 is the same size as the 100 µg size of ab19012.</p> <p>The Life Science industry has been in the grips of a reproducibility crisis for a number of years. Abcam is leading the way in addressing this with our range of recombinant monoclonal antibodies and knockout edited cell lines for gold-standard validation. Please check that this product meets your needs before purchasing.</p> <p>If you have any questions, special requirements or concerns, please send us an inquiry and/or contact our Support team ahead of purchase. Recommended alternatives for this product can be found below, along with publications, customer reviews and Q&As</p>

製品の特性

製品の状態	Liquid
保存方法	Shipped at 4°C. Upon delivery aliquot and store at -20°C or -80°C. Avoid repeated freeze / thaw cycles.
バッファー	pH: 7.2 Preservative: 0.02% Sodium azide Constituents: PBS, 50% Glycerol (glycerin, glycerine), 1% BSA
ポリ/モノ	ポリクローナル
アイソタイプ	IgG

アプリケーション

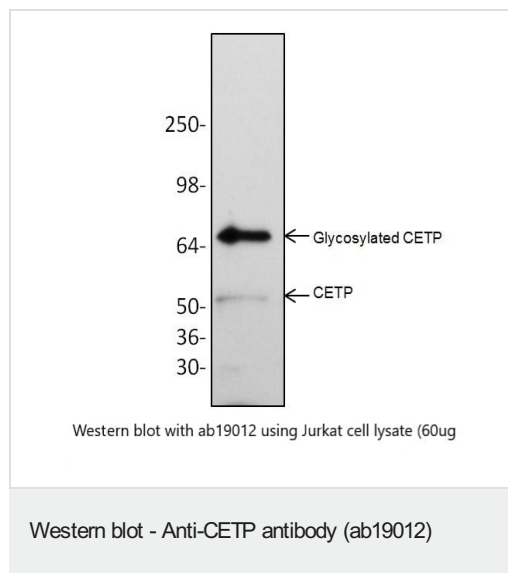
The Abpromise guarantee Abpromise保証は、次のテスト済みアプリケーションにおけるab19012の使用に適用されます
アプリケーションノートには、推奨の開始希釈率がありますが、適切な希釈率につきましてはご検討ください。

アプリケーション	Abreviews	特記事項
WB		Use a concentration of 0.5 - 4 µg/ml. Predicted molecular weight: 70 kDa.

ターゲット情報

機能	Involved in the transfer of insoluble cholesteryl esters in the reverse transport of cholesterol.
組織特異性	Expressed by the liver and secreted in plasma.
関連疾患	Defects in CETP are a cause of hyperalphalipoproteinemia (HYPALIP) [MIM:143470]. Affected individuals show high levels of alpha-lipoprotein (high density lipoprotein/HDL). Defects in CETP are the cause of cholesteryl ester transfer protein deficiency (CETP deficiency) [MIM:607322]. This is an autosomal dominant condition associated with increased HDL cholesterol levels.
配列類似性	Belongs to the BP1/LBP/Plunc superfamily. BP1/LBP family.
細胞内局在	Secreted > extracellular space.

画像



Anti-CETP antibody (ab19012) (0.5-4 mg/ml) + Jurkat cell lysate at 60 µg

Predicted band size: 70 kDa

The antibody recognizes 54 kDa CETP and the 70 kDa mature glycosylated form of CETP

Please note: All products are "FOR RESEARCH USE ONLY. NOT FOR USE IN DIAGNOSTIC PROCEDURES"

Our Abpromise to you: Quality guaranteed and expert technical support

- Replacement or refund for products not performing as stated on the datasheet

- Valid for 12 months from date of delivery
- Response to your inquiry within 24 hours
- We provide support in Chinese, English, French, German, Japanese and Spanish
- Extensive multi-media technical resources to help you
- We investigate all quality concerns to ensure our products perform to the highest standards

If the product does not perform as described on this datasheet, we will offer a refund or replacement. For full details of the Abpromise, please visit <https://www.abcam.co.jp/abpromise> or contact our technical team.

Terms and conditions

- Guarantee only valid for products bought direct from Abcam or one of our authorized distributors