

### Anti-CES2 antibody ab88439

画像数 2

#### 製品の概要

---

製品名	Anti-CES2 antibody
製品の詳細	Mouse polyclonal to CES2
由来種	Mouse
アプリケーション	<b>適用あり:</b> WB
種交差性	<b>交差種:</b> Human
免疫原	Recombinant full length protein corresponding to Human CES2 aa 1-650. Full length protein, corresponding to amino acids 1-623 of Human CES2 (NP_003860.2).
ポジティブ・コントロール	Human liver tissue lysate and cell lysate from CES2 transfected 293T cells.
特記事項	<p>The Life Science industry has been in the grips of a reproducibility crisis for a number of years. Abcam is leading the way in addressing this with our range of recombinant monoclonal antibodies and knockout edited cell lines for gold-standard validation. Please check that this product meets your needs before purchasing.</p> <p>If you have any questions, special requirements or concerns, please send us an inquiry and/or contact our Support team ahead of purchase. Recommended alternatives for this product can be found below, along with publications, customer reviews and Q&amp;As</p>

#### 製品の特性

---

製品の状態	Liquid
保存方法	Shipped at 4°C. Upon delivery aliquot and store at -20°C. Avoid repeated freeze / thaw cycles.
バッファー	pH: 7.4 Constituent: PBS
精製度	Protein A purified
ポリ/モノ	ポリクローナル
アイソタイプ	IgG

#### アプリケーション

---

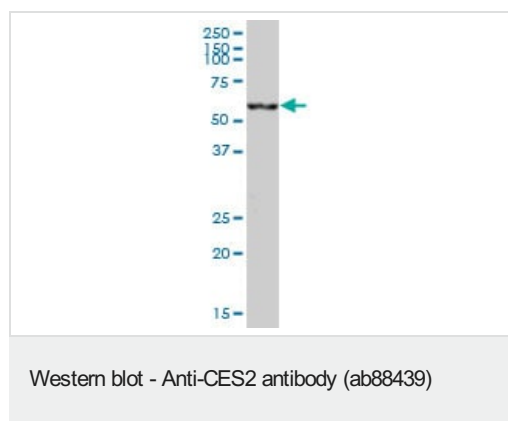
**The Abpromise guarantee**      **Abpromise保証は、次のテスト済みアプリケーションにおけるab88439の使用に適用されます**  
アプリケーションノートには、推奨の開始希釈率がありますが、適切な希釈率につきましてはご検討ください。

アプリケーション	Abreviews	特記事項
WB		Use a concentration of 1 µg/ml. Predicted molecular weight: 62 kDa.

## ターゲット情報

機能	Involved in the detoxification of xenobiotics and in the activation of ester and amide prodrugs. Shows high catalytic efficiency for hydrolysis of cocaine, 4-methyumbelliferyl acetate, heroin and 6-monoacetylmorphine.
組織特異性	Preferentially expressed in intestine with moderate expression in liver. Within the intestine, highest expression is found in small intestine with lower expression in colon and rectum.
配列類似性	Belongs to the type-B carboxylesterase/lipase family.
翻訳後修飾	Glycosylated.
細胞内局在	Endoplasmic reticulum lumen.

## 画像

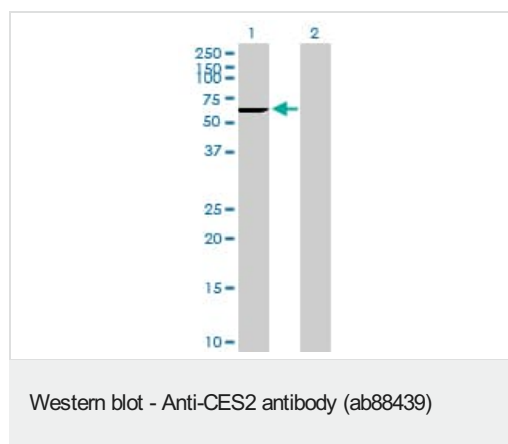


Anti-CES2 antibody (ab88439) at 1 µg/ml + human liver tissue lysate at 25 µg

Developed using the ECL technique.

**Predicted band size:** 62 kDa

**Observed band size:** 62 kDa



**All lanes :** Anti-CES2 antibody (ab88439) at 1 µg/ml

**Lane 1 :** cell lysate from CES2 transfected 293T cells

**Lane 2 :** cell lysate from non transfected 293 T cells

Lysates/proteins at 25 µg per lane.

Developed using the ECL technique.

**Predicted band size:** 62 kDa

**Observed band size:** 62 kDa

**Please note:** All products are "FOR RESEARCH USE ONLY. NOT FOR USE IN DIAGNOSTIC PROCEDURES"

## **Our Abpromise to you: Quality guaranteed and expert technical support**

---

- Replacement or refund for products not performing as stated on the datasheet
- Valid for 12 months from date of delivery
- Response to your inquiry within 24 hours
  
- We provide support in Chinese, English, French, German, Japanese and Spanish
- Extensive multi-media technical resources to help you
- We investigate all quality concerns to ensure our products perform to the highest standards

If the product does not perform as described on this datasheet, we will offer a refund or replacement. For full details of the Abpromise, please visit <https://www.abcam.co.jp/abpromise> or contact our technical team.

## **Terms and conditions**

---

- Guarantee only valid for products bought direct from Abcam or one of our authorized distributors