


# Anti-Ceramide glucosyltransferase antibody ab124296

[3 References](#) [画像数 1](#)

### 製品の概要

製品名	Anti-Ceramide glucosyltransferase antibody
製品の詳細	Rabbit polyclonal to Ceramide glucosyltransferase
由来種	Rabbit
アプリケーション	<b>適用あり:</b> WB
種交差性	<b>交差種:</b> Mouse, Rat, Human <b>交差が予測される動物種:</b> Rabbit, Chicken, Cow, Pig, Chimpanzee, Macaque monkey, Gorilla, Chinese hamster, Orangutan 
免疫原	Synthetic peptide corresponding to Human Ceramide glucosyltransferase aa 1-100 conjugated to keyhole limpet haemocyanin. (Peptide available as <b>ab140400</b> )
ポジティブ・コントロール	This antibody gave a positive signal in MCF7 and A375 whole cell lysates, and in the following tissue lysates: Human Brain; Mouse Brain; Rat Brain; Mouse Spleen; Rat Spleen.
特記事項	<p>The Life Science industry has been in the grips of a reproducibility crisis for a number of years. Abcam is leading the way in addressing this with our range of recombinant monoclonal antibodies and knockout edited cell lines for gold-standard validation. Please check that this product meets your needs before purchasing.</p> <p>If you have any questions, special requirements or concerns, please send us an inquiry and/or contact our Support team ahead of purchase. Recommended alternatives for this product can be found below, along with publications, customer reviews and Q&amp;As</p>

### 製品の特性

製品の状態	Liquid
保存方法	Shipped at 4°C. Store at +4°C short term (1-2 weeks). Upon delivery aliquot. Store at -20°C or -80°C. Avoid freeze / thaw cycle.
バッファー	pH: 7.40 Preservative: 0.02% Sodium azide Constituent: PBS
	Batches of this product that have a concentration < 1mg/ml may have BSA added as a stabilising agent. If you would like information about the formulation of a specific lot, please contact our scientific support team who will be happy to help.

精製度	Immunogen affinity purified
ポリモノ	ポリクローナル
アイソタイプ	IgG

## アプリケーション

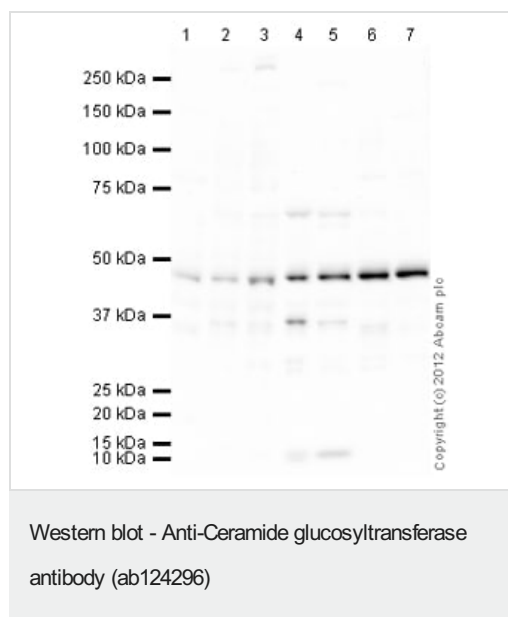
**The Abpromise guarantee**      **Abpromise保証は、次のテスト済みアプリケーションにおけるab124296の使用に適用されず**  
 アプリケーションノートには、推奨の開始希釈率がありますが、適切な希釈率につきましてはご検討ください。

アプリケーション	Abreviews	特記事項
WB		Use a concentration of 1 µg/ml. Detects a band of approximately 48 kDa (predicted molecular weight: 45 kDa).

## ターゲット情報

機能	Catalyzes the first glycosylation step in glycosphingolipid biosynthesis, the transfer of glucose to ceramide. May also serve as a "flippase".
組織特異性	Found in all tissues examined.
パスウェイ	Lipid metabolism; sphingolipid metabolism.
配列類似性	Belongs to the glycosyltransferase 2 family.
細胞内局在	Golgi apparatus membrane.

## 画像



**All lanes** : Anti-Ceramide glucosyltransferase antibody (ab124296)  
 at 1 µg/ml

**Lane 1** : Human brain tissue lysate - total protein ([ab29466](#))

**Lane 2** : Brain (Mouse) Tissue Lysate

**Lane 3** : Brain (Rat) Tissue Lysate

**Lane 4** : Spleen (Mouse) Tissue Lysate

**Lane 5** : Spleen (Rat) Tissue Lysate

**Lane 6** : MCF7 (Human breast adenocarcinoma cell line) Whole Cell Lysate

**Lane 7** : A375 (Human melanoma cell line) Whole Cell Lysate

Lysates/proteins at 10 µg per lane.

### Secondary

**All lanes** : Goat Anti-Rabbit IgG H&L (HRP) preadsorbed ([ab97080](#)) at 1/5000 dilution

Developed using the ECL technique.

Performed under reducing conditions.

**Predicted band size:** 45 kDa

**Observed band size:** 48 kDa

**Additional bands at:** 12 kDa, 36 kDa, 68 kDa. We are unsure as to the identity of these extra bands.

**Exposure time:** 30 seconds

This blot was produced using a 4-12% Bis-tris gel under the MOPS buffer system. The gel was run at 200V for 50 minutes before being transferred onto a Nitrocellulose membrane at 30V for 70 minutes. The membrane was then blocked for an hour using 5% Bovine Serum Albumin before being incubated with ab124296 overnight at 4°C. Antibody binding was detected using an anti-rabbit antibody conjugated to HRP, and visualised using ECL development solution.

**Please note:** All products are "FOR RESEARCH USE ONLY. NOT FOR USE IN DIAGNOSTIC PROCEDURES"

### **Our Abpromise to you: Quality guaranteed and expert technical support**

---

- Replacement or refund for products not performing as stated on the datasheet
- Valid for 12 months from date of delivery
- Response to your inquiry within 24 hours
  
- We provide support in Chinese, English, French, German, Japanese and Spanish
- Extensive multi-media technical resources to help you
- We investigate all quality concerns to ensure our products perform to the highest standards

If the product does not perform as described on this datasheet, we will offer a refund or replacement. For full details of the Abpromise, please visit <https://www.abcam.co.jp/abpromise> or contact our technical team.

### **Terms and conditions**

---

- Guarantee only valid for products bought direct from Abcam or one of our authorized distributors