

Anti-CEP135 antibody ab75005

★★★★★ [1 Abreviews](#) [35 References](#) [画像数 1](#)

製品の概要

製品名	Anti-CEP135 antibody
製品の詳細	Rabbit polyclonal to CEP135
由来種	Rabbit
アプリケーション	適用あり: ELISA, ICC/IF, WB
種交差性	交差種: Mouse, Human
免疫原	synthesized peptide derived from C-terminal region of human CEP135.
特記事項	<p>The Life Science industry has been in the grips of a reproducibility crisis for a number of years. Abcam is leading the way in addressing this with our range of recombinant monoclonal antibodies and knockout edited cell lines for gold-standard validation. Please check that this product meets your needs before purchasing.</p> <p>If you have any questions, special requirements or concerns, please send us an inquiry and/or contact our Support team ahead of purchase. Recommended alternatives for this product can be found below, along with publications, customer reviews and Q&As</p>

製品の特性

製品の状態	Liquid
保存方法	Shipped at 4°C. Upon delivery aliquot and store at -20°C. Avoid freeze / thaw cycles.
バッファー	pH: 7.40 Preservative: 0.02% Sodium azide Constituents: 50% Glycerol (glycerin, glycerine), 0.87% Sodium chloride, PBS
精製度	Without Mg ²⁺ and Ca ²⁺ Immunogen affinity purified
ポリ/モノ	ポリクローナル
アイソタイプ	IgG

アプリケーション

The Abpromise guarantee

Abpromise保証は、次のテスト済みアプリケーションにおけるab75005の使用に適用されます

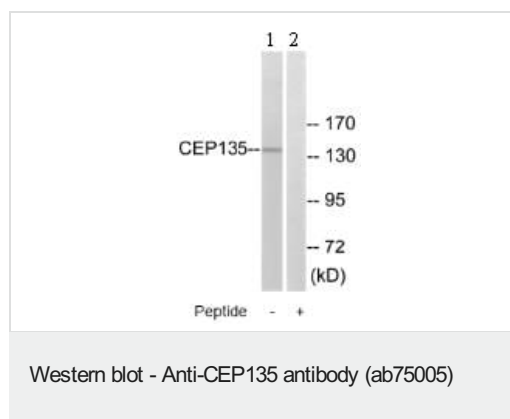
アプリケーションノートには、推奨の開始希釈率がありますが、適切な希釈率につきましてはご確認ください。

アプリケーション	Abreviews	特記事項
ELISA		Use at an assay dependent concentration.
ICC/IF	★★★★★ (1)	Use at an assay dependent concentration.
WB		1/500 - 1/1000. Predicted molecular weight: 134 kDa.

ターゲット情報

機能	Centrosomal protein involved in centriole biogenesis. Acts as a scaffolding protein during early centriole biogenesis. Required for the targeting of centriole satellite proteins to centrosomes such as of PCM1, SSX2IP and CEP290 and recruitment of WRAP73 to centrioles. Also required for centriole-centriole cohesion during interphase by acting as a platform protein for CEP250 at the centriole.
関連疾患	Microcephaly 8, primary, autosomal recessive
配列類似性	Belongs to the CEP135/TSGA10 family.
細胞内局在	Cytoplasm, cytoskeleton, microtubule organizing center, centrosome, centriole. During centriole biogenesis, it is concentrated within the proximal lumen of both parental centrioles and procentrioles.

画像



All lanes : Anti-CEP135 antibody (ab75005) at 1/500 dilution

Lane 1 : extracts from COLO cells

Lane 2 : extracts from COLO cells with immunising peptide at 10 µg

Lysates/proteins at 30 µg per lane.

Predicted band size: 134 kDa

Observed band size: 134 kDa

Please note: All products are "FOR RESEARCH USE ONLY. NOT FOR USE IN DIAGNOSTIC PROCEDURES"

Our Abpromise to you: Quality guaranteed and expert technical support

- Replacement or refund for products not performing as stated on the datasheet
- Valid for 12 months from date of delivery
- Response to your inquiry within 24 hours

- We provide support in Chinese, English, French, German, Japanese and Spanish
- Extensive multi-media technical resources to help you
- We investigate all quality concerns to ensure our products perform to the highest standards

If the product does not perform as described on this datasheet, we will offer a refund or replacement. For full details of the Abpromise, please visit <https://www.abcam.co.jp/abpromise> or contact our technical team.

Terms and conditions

- Guarantee only valid for products bought direct from Abcam or one of our authorized distributors