


### Anti-Centrin 1 antibody ab101332

★★★★★ 1 Abreviews 4 References 画像数 1

医薬用外劇物

#### 製品の概要

製品名	Anti-Centrin 1 antibody
製品の詳細	Rabbit polyclonal to Centrin 1
由来種	Rabbit
アプリケーション	適用あり: ICC/IF, WB
種交差性	交差種: Human 交差が予測される動物種: Mouse, Rat, Cow 
免疫原	Recombinant protein fragment containing a sequence corresponding to a region within amino acids 1-162 of Human Centrin 1 (AAH29515).
特記事項	<p>The Life Science industry has been in the grips of a reproducibility crisis for a number of years. Abcam is leading the way in addressing this with our range of recombinant monoclonal antibodies and knockout edited cell lines for gold-standard validation. Please check that this product meets your needs before purchasing.</p> <p>If you have any questions, special requirements or concerns, please send us an inquiry and/or contact our Support team ahead of purchase. Recommended alternatives for this product can be found below, along with publications, customer reviews and Q&amp;As</p>

#### 製品の特性

製品の状態	Liquid
保存方法	Shipped at 4°C. Upon delivery aliquot and store at -20°C or -80°C. Avoid repeated freeze / thaw cycles.
バッファー	pH: 7.00 Preservative: 0.01% Thimerosal (merthiolate) Constituents: 1.21% Tris, 0.75% Glycine, 20% Glycerol (glycerin, glycerine)
精製度	Immunogen affinity purified
ポリ/モノ	ポリクローナル
アイソタイプ	IgG

#### アプリケーション

## The Abpromise guarantee

**Abpromise保証は、次のテスト済みアプリケーションにおけるab101332の使用に適用されます**

アプリケーションノートには、推奨の開始希釈率がありますが、適切な希釈率につきましてはご確認ください。

アプリケーション	Abreviews	特記事項
ICC/IF	★★★★★ (1)	Use at an assay dependent concentration.
WB		1/500 - 1/3000. Predicted molecular weight: 20 kDa.

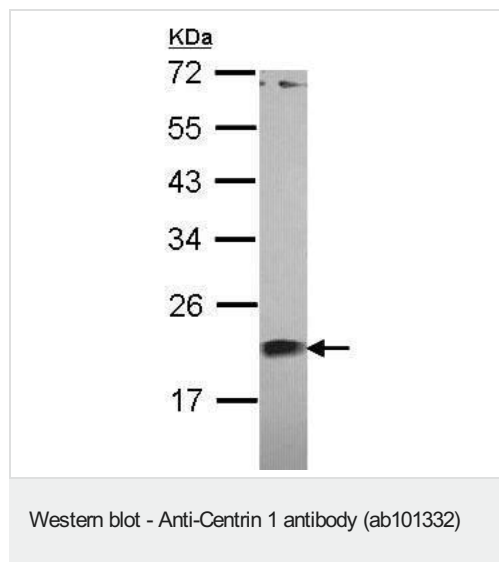
## ターゲット情報

**機能** Plays a fundamental role in microtubule-organizing center structure and function.

**配列類似性** Belongs to the centrin family.  
Contains 4 EF-hand domains.

**細胞内局在** Cytoplasm > cytoskeleton > centrosome. Centrosome of interphase and mitotic cells.

## 画像



Anti-Centrin 1 antibody (ab101332) at 1/1000 dilution + Jurkat whole cell lysate at 30 µg

**Predicted band size:** 20 kDa

12% SDS PAGE

**Please note:** All products are "FOR RESEARCH USE ONLY. NOT FOR USE IN DIAGNOSTIC PROCEDURES"

## Our Abpromise to you: Quality guaranteed and expert technical support

- Replacement or refund for products not performing as stated on the datasheet
- Valid for 12 months from date of delivery
- Response to your inquiry within 24 hours
- We provide support in Chinese, English, French, German, Japanese and Spanish
- Extensive multi-media technical resources to help you
- We investigate all quality concerns to ensure our products perform to the highest standards

If the product does not perform as described on this datasheet, we will offer a refund or replacement. For full details of the Abpromise,

please visit <https://www.abcam.co.jp/abpromise> or contact our technical team.

#### **Terms and conditions**

---

- Guarantee only valid for products bought direct from Abcam or one of our authorized distributors