

Anti-CENPB antibody ab25734

KO 評価済

★★★★★ [6 Abreviews](#) [44 References](#) [画像数 5](#)

製品の概要

製品名	Anti-CENPB antibody
製品の詳細	Rabbit polyclonal to CENPB
由来種	Rabbit
アプリケーション	適用あり: WB, ICC/IF, ICC
種交差性	交差種: Human 交差が予測される動物種: Mouse, Rat, Sheep, Hamster 
免疫原	Synthetic peptide conjugated to KLH derived from within residues 550 to the C-terminus of Human CENPB. Immunogen の所有権に関して (Peptide available as ab28019 .)
ポジティブ・コントロール	ICC: HeLa cells. WB: A431, Jurkat, Daudi and HeLa cell lysates.
特記事項	<p>The Life Science industry has been in the grips of a reproducibility crisis for a number of years. Abcam is leading the way in addressing this with our range of recombinant monoclonal antibodies and knockout edited cell lines for gold-standard validation. Please check that this product meets your needs before purchasing.</p> <p>If you have any questions, special requirements or concerns, please send us an inquiry and/or contact our Support team ahead of purchase. Recommended alternatives for this product can be found below, along with publications, customer reviews and Q&As</p>

製品の特性

製品の状態	Liquid
保存方法	Shipped at 4°C. Store at +4°C short term (1-2 weeks). Upon delivery aliquot. Store at -20°C or -80°C. Avoid freeze / thaw cycle.
バッファー	<p>pH: 7.40</p> <p>Preservative: 0.02% Sodium azide</p> <p>Constituent: PBS</p> <p>Batches of this product that have a concentration < 1mg/ml may have BSA added as a stabilising agent. If you would like information about the formulation of a specific lot, please contact our scientific support team who will be happy to help.</p>
精製度	Immunogen affinity purified

アイソタイプ

lgG

アプリケーション

アプリケーションノートには、推奨の開始希釈率がありますが、適切な希釈率につきましてはご検討ください。

アプリケーション	Abreviews	特記事項
WB	★★★★★ (1)	Use a concentration of 1 - 5 µg/ml. Detects a band of approximately 65 kDa (predicted molecular weight: 65 kDa).
ICC/IF	★★★★★ (5)	1/200 - 1/1000.
ICC		Use a concentration of 1 µg/ml.

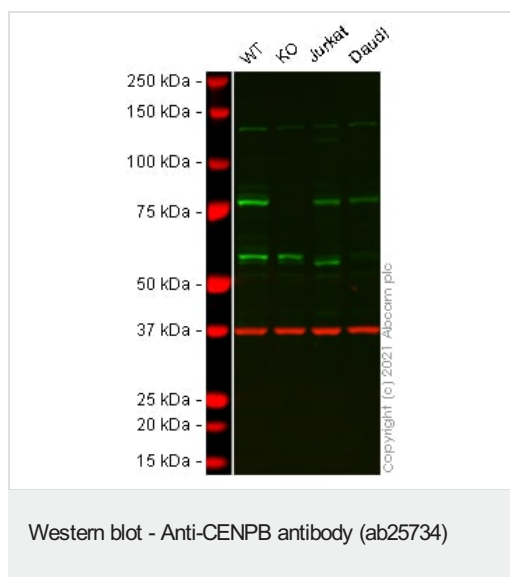
ターゲット情報

Interacts with centromeric heterochromatin in chromosomes and binds to a specific subset of alphoid satellite DNA, called the CENP-B box. May organize arrays of centromere satellite DNA into a higher order structure which then directs centromere formation and kinetochore assembly in mammalian chromosomes.

Contains 1 HTH CENPB-type DNA-binding domain.
Contains 1 HTH psq-type DNA-binding domain.

Nucleus. Chromosome > centromere.

画像



All lanes : Anti-CENPB antibody (ab25734) at 1 µg/ml

Lane 1 : Wild-type A-431 (Human epidermoid carcinoma cell line)
whole cell lysate

Lane 2 : CENPB knockout A-431 (Human epidermoid carcinoma cell line) whole cell lysate

Lane 3 : Jurkat (Human T cell leukemia cell line from peripheral blood) whole cell lysate

Lane 4 : Daudi (Human Burkitt's lymphoma cell line) whole cell lysate

Lysates/proteins at 20 µg per lane.

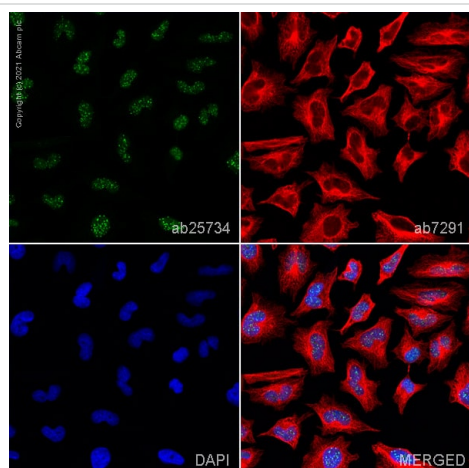
Performed under reducing conditions.

Predicted band size: 65 kDa

Observed band size: 77 kDa

Lanes 1 - 4: Merged signal (red and green). Green - ab25734 observed at 77 kDa. Red - loading control **ab8245** (Mouse anti-GAPDH antibody [6C5]) observed at 37 kDa.

ab25734 was shown to react with CENPB in wild-type A431 cells in Western blot with loss of signal observed in CENPB knockout sample. Wild-type A431 and CENPB knockout cell lysates were subjected to SDS-PAGE. Membranes were blocked in 3 % milk in TBS-T (0.1 % Tween®) before incubation with ab25734 and **ab8245** (Mouse anti-GAPDH antibody [6C5]) overnight at 4°C at 1 µg/ml and a 1 in 20000 dilution respectively. Blots were incubated with Goat anti-Rabbit IgG H&L (IRDye® 800CW) preabsorbed (**ab216773**) and Goat anti-Mouse IgG H&L (IRDye® 680RD) preabsorbed (**ab216776**) secondary antibodies at 1 in 20000 dilution for 1 h at room temperature before imaging.



Immunocytochemistry/ Immunofluorescence - Anti-CENPB antibody (ab25734)

ab25734 staining CENPB in HeLa cells. The cells were fixed with 4% paraformaldehyde (10 min), permeabilized with 0.1% PBS-Triton X-100 for 5 minutes and then blocked with 1% BSA/10% normal goat serum/0.3M glycine in 0.1% PBS-Tween for 1h. The cells were then incubated overnight at 4°C with ab25734 at 1 µg/ml and **ab7291**, Mouse monoclonal [DM1A] to alpha Tubulin - Loading Control. Cells were then incubated with **ab150120**, Goat polyclonal Secondary Antibody to Mouse IgG - H&L (Alexa Fluor® 594), pre-adsorbed at 1/1000 dilution (shown in green) and **ab150081**, Goat polyclonal Secondary Antibody to Rabbit IgG - H&L (Alexa Fluor® 488), pre-adsorbed at 1/1000 dilution (shown in pseudocolour red). Nuclear DNA was labelled with DAPI (shown in blue).

Also suitable in cells fixed with 100% methanol (5 min).

Image was acquired with a high-content analyser (Operetta CLS, Perkin Elmer) and a maximum intensity projection of confocal sections is shown.

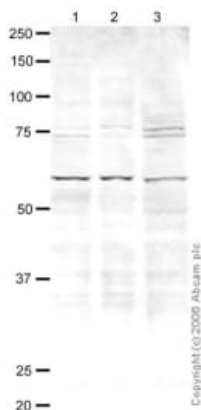


Immunocytochemistry/ Immunofluorescence - Anti-CENPB antibody (ab25734)

Image courtesy of an AbReview by Weiguo Zhang

4% paraformaldehyde-fixed, 0.2% Triton X-100 permeabilized HeLa (human epithelial cell line from cervix adenocarcinoma) cells stained for CENPB (red) using ab25734 at 1/200 dilution in ICC/IF.

The nuclear counterstain is DAPI (blue). Alpha-Tubulin is stained with an mouse monoclonal anti-alpha Tubulin antibody (green).



Western blot - Anti-CENPB antibody (ab25734)

All lanes : Anti-CENPB antibody (ab25734) at 1 µg/ml

Lane 1 : HeLa (Human epithelial carcinoma cell line) Whole Cell Lysate

Lane 2 : Jurkat whole cell lysate ([ab78999](#))

Lane 3 : A-431 whole cell lysate ([ab79099](#))

Lysates/proteins at 20 µg per lane.

Secondary

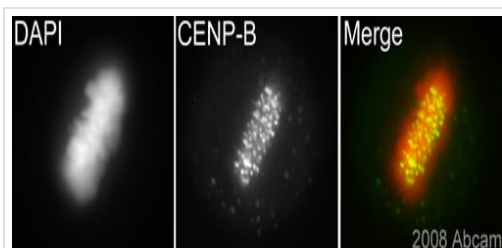
All lanes : Goat polyclonal to Rabbit IgG (Alexa Fluor® 680) at 1/10000 dilution

Developed using the ECL technique.

Predicted band size: 65 kDa

Observed band size: 65 kDa

Additional bands at: 74 kDa (possible cross reactivity), 75 kDa (possible cross reactivity)



Immunocytochemistry - Anti-CENPB antibody
(ab25734)

This image is courtesy of an Abreview submitted by Dr Kirk McManus

ab25734 (1/1000) staining CENPB in HeLa cells (green). Cells were fixed with methanol and counterstained with DAPI in order to highlight the nucleus (red). Please refer to abreview for further experimental details.

Please note: All products are "FOR RESEARCH USE ONLY. NOT FOR USE IN DIAGNOSTIC PROCEDURES"

Our Abpromise to you: Quality guaranteed and expert technical support

- Replacement or refund for products not performing as stated on the datasheet
- Valid for 12 months from date of delivery
- Response to your inquiry within 24 hours
- We provide support in Chinese, English, French, German, Japanese and Spanish
- Extensive multi-media technical resources to help you
- We investigate all quality concerns to ensure our products perform to the highest standards

If the product does not perform as described on this datasheet, we will offer a refund or replacement. For full details of the Abpromise, please visit <https://www.abcam.co.jp/abpromise> or contact our technical team.

Terms and conditions

- Guarantee only valid for products bought direct from Abcam or one of our authorized distributors