


# Anti-Cenexin1/ODF2 antibody ab125192

画像数 2

### 製品の概要

---

製品名	Anti-Cenexin1/ODF2 antibody
製品の詳細	Rabbit polyclonal to Cenexin1/ODF2
由来種	Rabbit
アプリケーション	適用あり: WB, IP
種交差性	交差種: Human 交差が予測される動物種: Mouse, Rat, Horse, Guinea pig, Dog, Pig, Chimpanzee, Rhesus monkey, Chinese hamster, Orangutan, Bat 
免疫原	Synthetic peptide, corresponding to a region within amino acids 150-200 of Human Cenexin1/ODF2 (NP_702911.1).
ポジティブ・コントロール	HeLa whole cell lysate 293T whole cell lysate
特記事項	<p>The Life Science industry has been in the grips of a reproducibility crisis for a number of years. Abcam is leading the way in addressing this with our range of recombinant monoclonal antibodies and knockout edited cell lines for gold-standard validation. Please check that this product meets your needs before purchasing.</p> <p>If you have any questions, special requirements or concerns, please send us an inquiry and/or contact our Support team ahead of purchase. Recommended alternatives for this product can be found below, along with publications, customer reviews and Q&amp;As</p>

### 製品の特性

---

製品の状態	Liquid
保存方法	Shipped at 4°C. Store at -20°C. The product can be stored for up to 12 months.
バッファー	pH: 7 Preservative: 0.09% Sodium azide Constituent: 99% Tris citrate/phosphate
精製度	pH 7 to 8 Immunogen affinity purified
ポリ/モノ	ポリクローナル
アイソタイプ	IgG

## アプリケーション

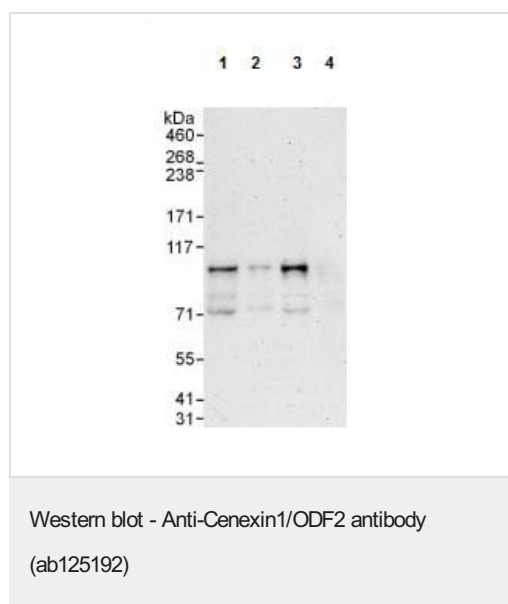
**The Abpromise guarantee**      **Abpromise保証は、** 次のテスト済みアプリケーションにおけるab125192の使用に適用されます  
アプリケーションノートには、推奨の開始希釈率がありますが、適切な希釈率につきましてはご検討ください。

アプリケーション	Abreviews	特記事項
WB		1/2000 - 1/10000. Predicted molecular weight: 95 kDa.
IP		Use at 2-10 µg/mg of lysate.

## ターゲット情報

<b>機能</b>	Seems to be a major component of sperm tail outer dense fibers (ODF). ODFs are filamentous structures located on the outside of the axoneme in the midpiece and principal piece of the mammalian sperm tail and may help to maintain the passive elastic structures and elastic recoil of the sperm tail. May have a modulating influence on sperm motility. Functions as a general scaffold protein that is specifically localized at the distal/subdistal appendages of mother centrioles. Component of the centrosome matrix required for the localization of PLK1 and NIN to the centrosomes. Required for the formation and/or maintenance of normal CETN1 assembly.
<b>組織特異性</b>	Testis-specific (at protein level). Highly expressed in cytoplasm of step 2 round spermatids. Detected in the middle piece and extends to about half the principal piece of the sperm tails.
<b>配列類似性</b>	Belongs to the ODF2 family.
<b>翻訳後修飾</b>	Tyrosine phosphorylated.
<b>細胞内局在</b>	Cytoplasm > cytoskeleton > centrosome. Cell projection > cilium. Cytoplasm > cytoskeleton > centrosome > centriole. Cytoplasm > cytoskeleton > spindle pole. Localized at the microtubule organizing centers in interphase and spindle poles in mitosis. Localized at the distal/subdistal appendages of mother centrioles.

## 画像



**All lanes :** Anti-Cenexin1/ODF2 antibody (ab125192) at 0.1 µg/ml

**Lane 1 :** HeLa whole cell lysate at 50 µg

**Lane 2 :** HeLa whole cell lysate at 15 µg

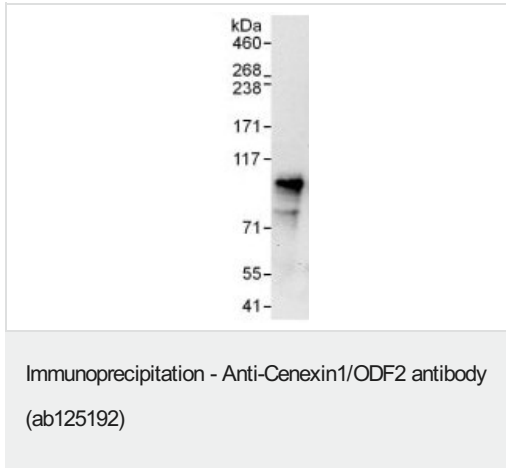
**Lane 3 :** 293T whole cell lysate at 50 µg

**Lane 4 :** Jurkat whole cell lysate at 50 µg

Developed using the ECL technique.

**Predicted band size:** 95 kDa

**Exposure time:** 3 minutes



**Immunoprecipitation :** 1 mg of HeLa cell lysate

immunoprecipitated with ab125192 at 6 µg/mg lysate; 20% of immunoprecipitate loaded in lane

**Western Blot:** Cenexin1/ODF2 antibody (ab125192) at 1 µg/ml

developed using the ECL technique

**Exposure time :** 30 seconds

**Please note:** All products are "FOR RESEARCH USE ONLY. NOT FOR USE IN DIAGNOSTIC PROCEDURES"

### Our Abpromise to you: Quality guaranteed and expert technical support

---

- Replacement or refund for products not performing as stated on the datasheet
- Valid for 12 months from date of delivery
- Response to your inquiry within 24 hours
- We provide support in Chinese, English, French, German, Japanese and Spanish
- Extensive multi-media technical resources to help you
- We investigate all quality concerns to ensure our products perform to the highest standards

If the product does not perform as described on this datasheet, we will offer a refund or replacement. For full details of the Abpromise, please visit <https://www.abcam.co.jp/abpromise> or contact our technical team.

### Terms and conditions

---

- Guarantee only valid for products bought direct from Abcam or one of our authorized distributors