


Anti-Cellular Apoptosis Susceptibility/CSE1L antibody ab96755

★★★★★ [1 Abreviews](#) [10 References](#) [画像数 5](#)

製品の概要

製品名	Anti-Cellular Apoptosis Susceptibility/CSE1L antibody
製品の詳細	Rabbit polyclonal to Cellular Apoptosis Susceptibility/CSE1L
由来種	Rabbit
アプリケーション	適用あり: WB, IHC-P, ICC/IF
種交差性	交差種: Mouse, Rat, Human 交差が予測される動物種: Cow, Zebrafish 
免疫原	Recombinant fragment corresponding to Human Cellular Apoptosis Susceptibility/CSE1L aa 222-439. Database link: NP_001307
ポジティブ・コントロール	WB: HEK-293T, A431, H1299, HeLa whole cell lysate. PC-12 and Rat2 whole cell lysate. NIH/3T3, JC, BCL-1 and C2C12 whole cell lysate. IHC-P: Cal27 Xenograft. ICC/IF: HeLa cells.
特記事項	<p>The Life Science industry has been in the grips of a reproducibility crisis for a number of years. Abcam is leading the way in addressing this with our range of recombinant monoclonal antibodies and knockout edited cell lines for gold-standard validation. Please check that this product meets your needs before purchasing.</p> <p>If you have any questions, special requirements or concerns, please send us an inquiry and/or contact our Support team ahead of purchase. Recommended alternatives for this product can be found below, along with publications, customer reviews and Q&As</p>

製品の特性

製品の状態	Liquid
保存方法	Shipped at 4°C. Store at +4°C short term (1-2 weeks). Upon delivery aliquot. Store at -20°C or -80°C. Avoid freeze / thaw cycle.
バッファー	pH: 7.00 Preservative: 0.025% Proclin 300 Constituents: 79% PBS, 20% Glycerol (glycerin, glycerine)
精製度	Immunogen affinity purified
ポリ/モノ	ポリクローナル
アイソタイプ	IgG

アプリケーション

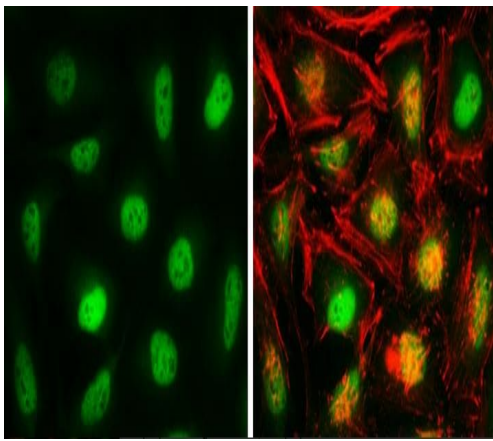
The Abpromise guarantee Abpromise保証は、次のテスト済みアプリケーションにおけるab96755の使用に適用されます
アプリケーションノートには、推奨の開始希釈率がありますが、適切な希釈率につきましてはご検討ください。

アプリケーション	Abreviews	特記事項
WB	★★★★★ (1)	1/1000 - 1/20000. Predicted molecular weight: 110 kDa.
IHC-P		1/100 - 1/2000. Suggested antigen retrieval using heat mediated 10mM Citrate buffer (pH6.0) or Tris-EDTA buffer (pH 8.0)
ICC/IF		1/100 - 1/1000.

ターゲット情報

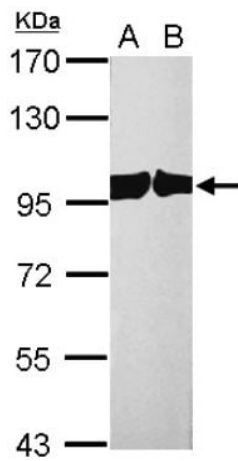
機能	Export receptor for importin-alpha. Mediates importin-alpha re-export from the nucleus to the cytoplasm after import substrates (cargos) have been released into the nucleoplasm. In the nucleus binds cooperatively to importin-alpha and to the GTPase Ran in its active GTP-bound form. Docking of this trimeric complex to the nuclear pore complex (NPC) is mediated through binding to nucleoporins. Upon transit of a nuclear export complex into the cytoplasm, disassembling of the complex and hydrolysis of Ran-GTP to Ran-GDP (induced by RANBP1 and RANGAP1, respectively) cause release of the importin-alpha from the export receptor. CSE1L/XPO2 then return to the nuclear compartment and mediate another round of transport. The directionality of nuclear export is thought to be conferred by an asymmetric distribution of the GTP- and GDP-bound forms of Ran between the cytoplasm and nucleus.
組織特異性	Highly expressed in proliferating cells.
配列類似性	Belongs to the XPO2/CSE1 family. Contains 1 importin N-terminal domain.
細胞内局在	Cytoplasm. Nucleus. Shuttles between the nucleus and the cytoplasm.

画像



Immunocytochemistry/ Immunofluorescence - Anti-Cellular Apoptosis Susceptibility/CSE1L antibody (ab96755)

HeLa cells stained for CSE1L (green) using ab96755 at 1/2000 dilution in ICC/IF.



Western blot - Anti-Cellular Apoptosis Susceptibility/CSE1L antibody (ab96755)

All lanes : Anti-Cellular Apoptosis Susceptibility/CSE1L antibody (ab96755) at 1/10000 dilution

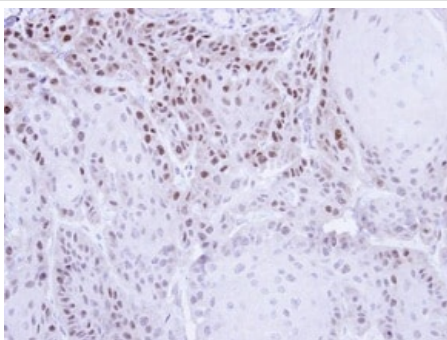
Lane 1 : PC-12 whole cell lysate

Lane 2 : Rat2 whole cell lysate

Lysates/proteins at 30 µg per lane.

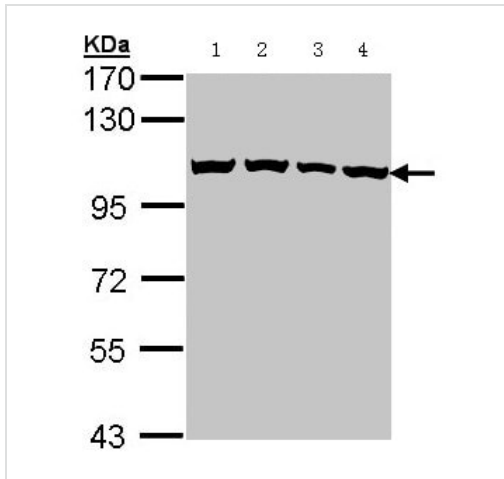
Predicted band size: 110 kDa

7.5% SDS-PAGE



Immunohistochemistry (Formalin/PFA-fixed paraffin-embedded sections) - Anti-Cellular Apoptosis Susceptibility/CSE1L antibody (ab96755)

Immunohistochemical analysis of paraffin-embedded Cal27 Xenograft using ab96755 at 1/500 dilution.



Western blot - Anti-Cellular Apoptosis Susceptibility/CSE1L antibody (ab96755)

All lanes : Anti-Cellular Apoptosis Susceptibility/CSE1L antibody (ab96755) at 1/1000 dilution

Lane 1 : HEK-293T whole cell lysate

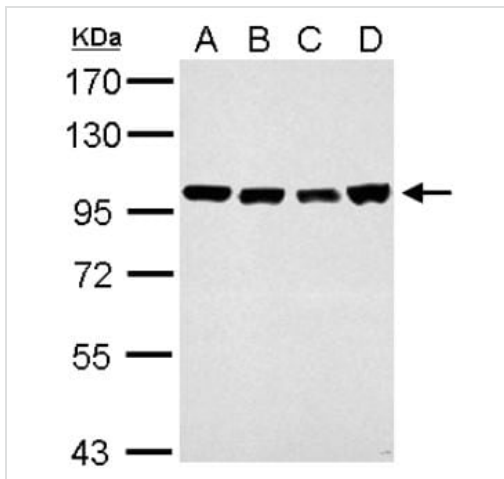
Lane 2 : A431 whole cell lysate

Lane 3 : H1299 whole cell lysate

Lane 4 : HeLa whole cell lysate

Lysates/proteins at 30 µg per lane.

Predicted band size: 110 kDa



Western blot - Anti-Cellular Apoptosis Susceptibility/CSE1L antibody (ab96755)

All lanes : Anti-Cellular Apoptosis Susceptibility/CSE1L antibody (ab96755) at 1/10000 dilution

Lane 1 : NIH/3T3 whole cell lysate

Lane 2 : JC whole cell lysate

Lane 3 : BCL-1 whole cell lysate

Lane 4 : C2C12 whole cell lysate

Lysates/proteins at 30 µg per lane.

Predicted band size: 110 kDa

7.5% SDS-PAGE

Please note: All products are "FOR RESEARCH USE ONLY. NOT FOR USE IN DIAGNOSTIC PROCEDURES"

Our Abpromise to you: Quality guaranteed and expert technical support

- Replacement or refund for products not performing as stated on the datasheet
- Valid for 12 months from date of delivery
- Response to your inquiry within 24 hours
- We provide support in Chinese, English, French, German, Japanese and Spanish
- Extensive multi-media technical resources to help you
- We investigate all quality concerns to ensure our products perform to the highest standards

If the product does not perform as described on this datasheet, we will offer a refund or replacement. For full details of the Abpromise, please visit <https://www.abcam.co.jp/abpromise> or contact our technical team.

Terms and conditions

- Guarantee only valid for products bought direct from Abcam or one of our authorized distributors