


Anti-Cellular Apoptosis Susceptibility/CSE1L antibody ab70547

画像数 5

製品の概要

製品名	Anti-Cellular Apoptosis Susceptibility/CSE1L antibody
製品の詳細	Rabbit polyclonal to Cellular Apoptosis Susceptibility/CSE1L
由来種	Rabbit
アプリケーション	適用あり: IHC-P, WB, IP
種交差性	交差種: Mouse, Human 交差が予測される動物種: Rat, Rabbit, Horse, Chicken, Guinea pig, Cow, Turkey, Pig, Chimpanzee, Rhesus monkey, Gorilla, Orangutan, Platypus 
免疫原	Synthetic peptide corresponding to Human Cellular Apoptosis Susceptibility/CSE1L (N terminal). Database link: NP_001307.2
ポジティブ・コントロール	WB: HeLa and Ramos whole cell lysate. IP: HEK-293T whole cell lysate. IHC-P: Human testicular seminoma; mouse plasmacytoma.
特記事項	<p>The Life Science industry has been in the grips of a reproducibility crisis for a number of years. Abcam is leading the way in addressing this with our range of recombinant monoclonal antibodies and knockout edited cell lines for gold-standard validation. Please check that this product meets your needs before purchasing.</p> <p>If you have any questions, special requirements or concerns, please send us an inquiry and/or contact our Support team ahead of purchase. Recommended alternatives for this product can be found below, along with publications, customer reviews and Q&As</p>

製品の特性

製品の状態	Liquid
保存方法	Shipped at 4°C. Upon delivery aliquot and store at -20°C. Avoid freeze / thaw cycles.
バッファー	pH: 7 Preservative: 0.09% Sodium azide Constituents: 1.815% Tris, 1.764% Sodium citrate, 0.021% PBS
精製度	Immunogen affinity purified
ポリ/モノ	ポリクローナル
アイソタイプ	IgG

アプリケーション

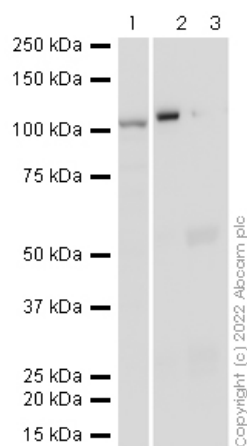
The Abpromise guarantee **Abpromise保証は、** 次のテスト済みアプリケーションにおけるab70547の使用に適用されます
アプリケーションノートには、推奨の開始希釈率がありますが、適切な希釈率につきましてはご検討ください。

アプリケーション	Abreviews	特記事項
IHC-P		1/1000 - 1/5000. Perform heat mediated antigen retrieval with citrate buffer pH 6 before commencing with IHC staining protocol.
WB		1/10000 - 1/25000. Detects a band of approximately 110 kDa (predicted molecular weight: 110 kDa).
IP		Use at 2-5 µg/mg of lysate.

ターゲット情報

機能	Export receptor for importin-alpha. Mediates importin-alpha re-export from the nucleus to the cytoplasm after import substrates (cargos) have been released into the nucleoplasm. In the nucleus binds cooperatively to importin-alpha and to the GTPase Ran in its active GTP-bound form. Docking of this trimeric complex to the nuclear pore complex (NPC) is mediated through binding to nucleoporins. Upon transit of a nuclear export complex into the cytoplasm, disassembling of the complex and hydrolysis of Ran-GTP to Ran-GDP (induced by RANBP1 and RANGAP1, respectively) cause release of the importin-alpha from the export receptor. CSE1L/XPO2 then return to the nuclear compartment and mediate another round of transport. The directionality of nuclear export is thought to be conferred by an asymmetric distribution of the GTP- and GDP-bound forms of Ran between the cytoplasm and nucleus.
組織特異性	Highly expressed in proliferating cells.
配列類似性	Belongs to the XPO2/CSE1 family. Contains 1 importin N-terminal domain.
細胞内局在	Cytoplasm. Nucleus. Shuttles between the nucleus and the cytoplasm.

画像



Western blot - Anti-Cellular Apoptosis
Susceptibility/CSE1L antibody (ab70547)

All lanes : Anti-Cellular Apoptosis Susceptibility/CSE1L antibody (ab70547) at 1/1000 dilution

Lane 1 : HeLa cell lysate at 20 µg

Lane 2 : HeLa Pulldown with ab70547 cell lysate at 10 µl

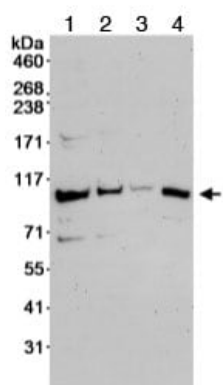
Lane 3 : HeLa Pulldown with **ab172730** cell lysate at 10 µl

Performed under reducing conditions.

Predicted band size: 110 kDa

Observed band size: 100 kDa

False colour image of Western blot: Anti-Cellular Apoptosis Susceptibility/CSE1L antibody staining at 1/1000 dilution, shown in black; Mouse anti-GAPDH antibody [6C5] (**ab8245**) loading control staining at 1/20000 dilution, shown in red. In Western blot, ab70547 was shown to bind specifically to Cellular Apoptosis Susceptibility/CSE1L. First, samples were run on an SDS-PAGE gel then transferred onto a nitrocellulose membrane. Membranes were blocked in 3 % milk in TBS-0.1 % Tween® 20 (TBS-T) before incubation with primary antibodies overnight at 4 °C. Blots were washed four times in TBS-T, incubated with secondary antibodies for 1 h at room temperature, washed again four times before development with Optiblot (ECL reagent **ab133456**) and imaged with 30 seconds exposure time. Secondary antibodies used were VeriBlot for IP Detection Reagent (HRP) (**ab131366**) at 1/1000 dilution.



Western blot - Anti-Cellular Apoptosis
Susceptibility/CSE1L antibody (ab70547)

All lanes : Anti-Cellular Apoptosis Susceptibility/CSE1L antibody (ab70547) at 0.04 µg/ml

Lane 1 : Whole cell lysate from HeLa cells at 50 µg

Lane 2 : Whole cell lysate from HeLa cells at 15 µg

Lane 3 : Whole cell lysate from HeLa cells at 5 µg

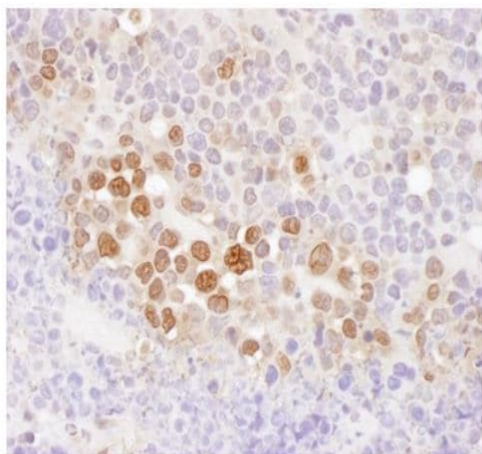
Lane 4 : Whole cell lysate from Ramos cells at 50 µg

Developed using the ECL technique.

Predicted band size: 110 kDa

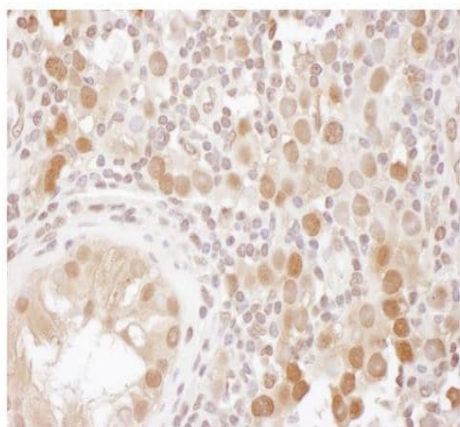
Observed band size: 110 kDa

Exposure time: 3 minutes



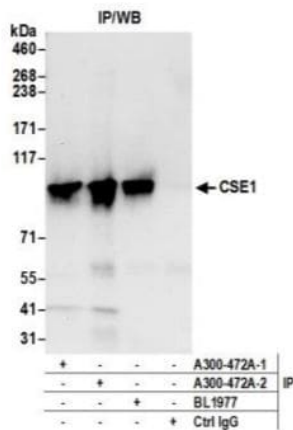
Immunohistochemistry (Formalin/PFA-fixed paraffin-embedded sections) - Anti-Cellular Apoptosis Susceptibility/CSE1L antibody (ab70547)

Paraffin embedded mouse plasmacytoma tissue stained for CSE1L using ab70547 at 0.2 µg/ml in immunohistochemical analysis.



Immunohistochemistry (Formalin/PFA-fixed paraffin-embedded sections) - Anti-Cellular Apoptosis Susceptibility/CSE1L antibody (ab70547)

Paraffin embedded human testicular seminoma tissue stained for CSE1L using ab70547 at 0.2 µg/ml in immunohistochemical analysis.



Immunoprecipitation - Anti-Cellular Apoptosis
Susceptibility/CSE1L antibody (ab70547)

Whole cell lysate (0.5 or 1.0 mg per IP reaction; 20% of IP loaded) from HEK-293T cells prepared using NETN lysis buffer.

Affinity purified rabbit anti-CSE1 antibody used for IP at 6 µg per reaction. CSE1 was also immunoprecipitated by a previous lot of this antibody and rabbit anti-CSE1 antibody BL1977.

For blotting immunoprecipitated CSE1, ab70547 was used at 1 µg/ml. Chemiluminescence had an exposure time of 10 seconds.

Please note: All products are "FOR RESEARCH USE ONLY. NOT FOR USE IN DIAGNOSTIC PROCEDURES"

Our Abpromise to you: Quality guaranteed and expert technical support

- Replacement or refund for products not performing as stated on the datasheet
- Valid for 12 months from date of delivery
- Response to your inquiry within 24 hours
- We provide support in Chinese, English, French, German, Japanese and Spanish
- Extensive multi-media technical resources to help you
- We investigate all quality concerns to ensure our products perform to the highest standards

If the product does not perform as described on this datasheet, we will offer a refund or replacement. For full details of the Abpromise, please visit <https://www.abcam.co.jp/abpromise> or contact our technical team.

Terms and conditions

- Guarantee only valid for products bought direct from Abcam or one of our authorized distributors