

# Anti-Cell adhesion molecule 2 antibody ab64873

6 References [画像数 1](#)

### 製品の概要

|          |   |
|----------|---|
| 製品名      | Anti-Cell adhesion molecule 2 antibody  |
| 製品の詳細    | Rabbit polyclonal to Cell adhesion molecule 2   |
| 由来種      | Rabbit  |
| アプリケーション | <b>適用あり:</b> WB   |
| 種交差性     | <b>交差種:</b> Human   |
| 免疫原      | Synthetic peptide (Human)   |
| 特記事項     | <p>The Life Science industry has been in the grips of a reproducibility crisis for a number of years. Abcam is leading the way in addressing this with our range of recombinant monoclonal antibodies and knockout edited cell lines for gold-standard validation. Please check that this product meets your needs before purchasing.</p> <p>If you have any questions, special requirements or concerns, please send us an inquiry and/or contact our Support team ahead of purchase. Recommended alternatives for this product can be found below, along with publications, customer reviews and Q&amp;As</p> |

### 製品の特性

|        |   |
|--------|---|
| 製品の状態  | Liquid  |
| 保存方法   | Shipped at 4°C. Store at -20°C. Stable for 12 months at -20°C.  |
| バッファー  | <p>pH: 7.40</p> <p>Preservative: 0.02% Sodium azide</p> <p>Constituents: PBS, 50% Glycerol, 0.87% Sodium chloride</p> |
| 精製度    | Without Mg <sup>2+</sup> and Ca <sup>2+</sup>   |
| ポリ/モノ  | Immunogen affinity purified   |
| アイソタイプ | ポリクローナル   |
|        | IgG   |

### アプリケーション

The Abpromise guarantee

**Abpromise保証は、次のテスト済みアプリケーションにおけるab64873の使用に適用されます**

アプリケーションノートには、推奨の開始希釈率がありますが、適切な希釈率につきましてはご確認ください。

| アプリケーション | Abreviews | 特記事項   |
|----------|-----------|--|
| WB       |           | 1/500 - 1/1000. Detects a band of approximately 48 kDa (predicted molecular weight: 48 kDa). |

## ターゲット情報

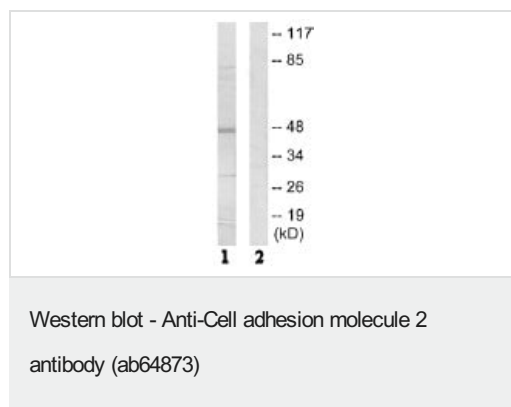
### 配列類似性

Belongs to the nectin family.  
Contains 2 Ig-like C2-type (immunoglobulin-like) domains.  
Contains 1 Ig-like V-type (immunoglobulin-like) domain.

### 細胞内局在

Membrane.

## 画像



**All lanes :** Anti-Cell adhesion molecule 2 antibody (ab64873) at 1/500 dilution

**Lane 1 :** Extracts from HepG2 cells

**Lane 2 :** Extracts from HepG2 cells with immunizing peptide at 5 µg

Lysates/proteins at 10 µg per lane.

**Predicted band size:** 48 kDa

**Observed band size:** 48 kDa

**Please note:** All products are "FOR RESEARCH USE ONLY. NOT FOR USE IN DIAGNOSTIC PROCEDURES"

## Our Abpromise to you: Quality guaranteed and expert technical support

- Replacement or refund for products not performing as stated on the datasheet
- Valid for 12 months from date of delivery
- Response to your inquiry within 24 hours
- We provide support in Chinese, English, French, German, Japanese and Spanish
- Extensive multi-media technical resources to help you
- We investigate all quality concerns to ensure our products perform to the highest standards

If the product does not perform as described on this datasheet, we will offer a refund or replacement. For full details of the Abpromise, please visit <https://www.abcam.co.jp/abpromise> or contact our technical team.

## Terms and conditions

---

- Guarantee only valid for products bought direct from Abcam or one of our authorized distributors