

# Anti-CELF3 antibody ab121249

★★★★★ [1 Abreviews](#) [画像数 2](#)

### 製品の概要

製品名	Anti-CELF3 antibody
製品の詳細	Rabbit polyclonal to CELF3
由来種	Rabbit
アプリケーション	<b>適用あり:</b> IHC-P, ICC/IF
種交差性	<b>交差種:</b> Human
免疫原	Recombinant fragment corresponding to Human CELF3 aa 268-401. Database link: <a href="#">Q5SZQ8</a>
ポジティブ・コントロール	IHC-P: Human cerebral cortex tissue; ICC/IF: SH-SY5Y cells.
特記事項	<p>The Life Science industry has been in the grips of a reproducibility crisis for a number of years. Abcam is leading the way in addressing this with our range of recombinant monoclonal antibodies and knockout edited cell lines for gold-standard validation. Please check that this product meets your needs before purchasing.</p> <p>If you have any questions, special requirements or concerns, please send us an inquiry and/or contact our Support team ahead of purchase. Recommended alternatives for this product can be found below, along with publications, customer reviews and Q&amp;As</p>

### 製品の特性

製品の状態	Liquid
保存方法	Shipped at 4°C. Upon delivery aliquot and store at -20°C. Avoid freeze / thaw cycles.
バッファー	pH: 7.20 Preservative: 0.02% Sodium azide Constituents: 59% PBS, 40% Glycerol (glycerin, glycerine)
精製度	Immunogen affinity purified
ポリ/モノ	ポリクローナル
アイソタイプ	IgG

### アプリケーション

The Abpromise guarantee

**Abpromise保証は、** 次のテスト済みアプリケーションにおけるab121249の使用に適用されます

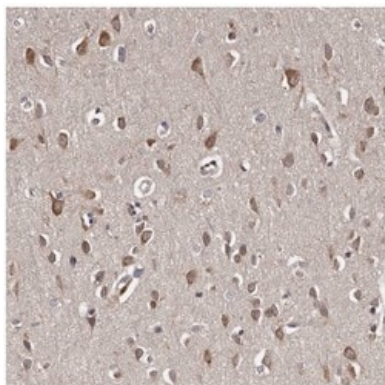
アプリケーションノートには、推奨の開始希釈率がありますが、適切な希釈率につきましてはご検討ください。

アプリケーション	Abreviews	特記事項
IHC-P	★★★★★ (1)	1/200 - 1/500. Perform heat mediated antigen retrieval with citrate buffer pH 6 before commencing with IHC staining protocol. Use buffer at pH 6 for antigen retrieval.
ICC/IF		Use a concentration of 0.25 - 2 µg/ml. Fixation/Permeabilization: PFA/Triton X-100

## ターゲット情報

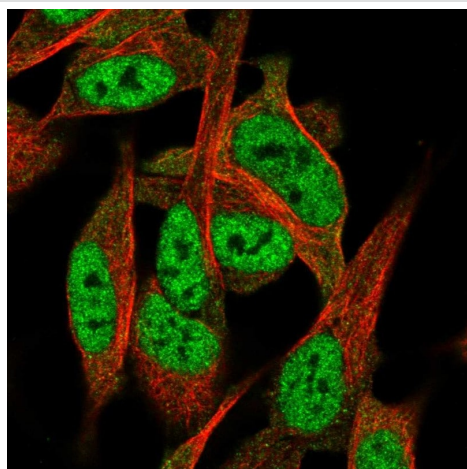
機能	RNA-binding protein involved in the regulation of pre-mRNA alternative splicing. Mediates exon inclusion and/or exclusion in pre-mRNA that are subject to tissue-specific and developmentally regulated alternative splicing. Specifically activates exon 5 inclusion of cardiac isoforms of TNNT2 during heart remodeling at the juvenile to adult transition. Binds to muscle-specific splicing enhancer (MSE) intronic sites flanking the alternative exon 5 of TNNT2 pre-mRNA.
組織特異性	Expressed in brain.
配列類似性	Belongs to the CELF/BRUNOL family. Contains 3 RRM (RNA recognition motif) domains.
細胞内局在	Nucleus. Cytoplasm.

## 画像



Immunohistochemical staining of paraffin embedded Human cerebral cortex, using 1/35 ab121249, shows distinct cytoplasmic positivity in neurons.

Immunohistochemistry (Formalin/PFA-fixed paraffin-embedded sections) - Anti-CELF3 antibody (ab121249)



Immunocytochemistry/ Immunofluorescence analysis of SH-SY5Y (Human neuroblastoma cell line from bone marrow) cell lysate labeling CELF3 with ab121249 at 2 µg/mL.

Immunocytochemistry/ Immunofluorescence - Anti-CELF3 antibody (ab121249)

**Please note:** All products are "FOR RESEARCH USE ONLY. NOT FOR USE IN DIAGNOSTIC PROCEDURES"

### Our Abpromise to you: Quality guaranteed and expert technical support

---

- Replacement or refund for products not performing as stated on the datasheet
- Valid for 12 months from date of delivery
- Response to your inquiry within 24 hours
- We provide support in Chinese, English, French, German, Japanese and Spanish
- Extensive multi-media technical resources to help you
- We investigate all quality concerns to ensure our products perform to the highest standards

If the product does not perform as described on this datasheet, we will offer a refund or replacement. For full details of the Abpromise, please visit <https://www.abcam.co.jp/abpromise> or contact our technical team.

### Terms and conditions

---

- Guarantee only valid for products bought direct from Abcam or one of our authorized distributors