


Anti-CEBPG antibody ab74045

3 References [画像数 2](#)

製品の概要

製品名	Anti-CEBPG antibody
製品の詳細	Rabbit polyclonal to CEBPG
由来種	Rabbit
アプリケーション	適用あり: WB, IHC-P
種交差性	交差種: Mouse, Human 交差が予測される動物種: Rat 
免疫原	Synthetic peptide corresponding to Human CEBPG (internal sequence).
特記事項	<p>The Life Science industry has been in the grips of a reproducibility crisis for a number of years. Abcam is leading the way in addressing this with our range of recombinant monoclonal antibodies and knockout edited cell lines for gold-standard validation. Please check that this product meets your needs before purchasing.</p> <p>If you have any questions, special requirements or concerns, please send us an inquiry and/or contact our Support team ahead of purchase. Recommended alternatives for this product can be found below, along with publications, customer reviews and Q&As</p>

製品の特性

製品の状態	Liquid
保存方法	Shipped at 4°C. Store at -20°C. Stable for 12 months at -20°C.
バッファー	pH: 7.40 Preservative: 0.02% Sodium azide Constituents: 50% Glycerol (glycerin, glycerine), 0.87% Sodium chloride, PBS
精製度	Without Mg2+ and Ca2+
ポリ/モノ	Immunogen affinity purified
アイソタイプ	ポリクローナル
	IgG

アプリケーション

The Abpromise guarantee

Abpromise保証は、次のテスト済みアプリケーションにおけるab74045の使用に適用されます

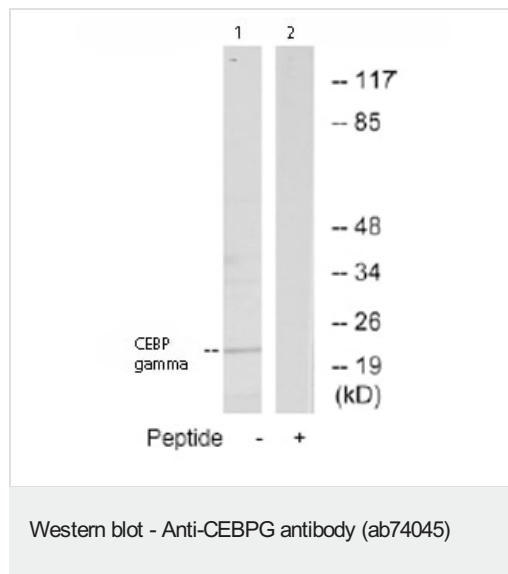
アプリケーションノートには、推奨の開始希釈率がありますが、適切な希釈率につきましてはご検討ください。

アプリケーション	Abreviews	特記事項
WB		1/500 - 1/1000. Detects a band of approximately 21 kDa (predicted molecular weight: 16 kDa).
IHC-P		1/50 - 1/100.

ターゲット情報

機能	Transcription factor that binds to the enhancer element PRE-I (positive regulatory element-I) of the IL-4 gene. Might change the DNA-binding specificity of other transcription factors and recruit them to unusual DNA sites.
配列類似性	Belongs to the bZIP family. C/EBP subfamily. Contains 1 bZIP (basic-leucine zipper) domain.
細胞内局在	Nucleus.

画像



All lanes : Anti-CEBPG antibody (ab74045) at 1/500 dilution

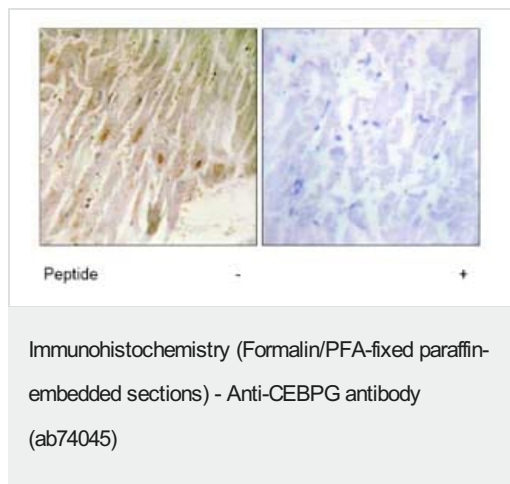
Lane 1 : Extracts from RAW264.7 cells

Lane 2 : Extracts from RAW264.7 cells with immunising peptide at 5 µg

Lysates/proteins at 5 µg per lane.

Predicted band size: 16 kDa

Observed band size: 21 kDa



Immunohistochemistry analysis of paraffin-embedded human heart tissue using ab74045, at 1/50 dilution, in the presence (right panel) or absence (left panel) of immunising peptide.

Please note: All products are "FOR RESEARCH USE ONLY. NOT FOR USE IN DIAGNOSTIC PROCEDURES"

Our Abpromise to you: Quality guaranteed and expert technical support

- Replacement or refund for products not performing as stated on the datasheet
- Valid for 12 months from date of delivery
- Response to your inquiry within 24 hours
- We provide support in Chinese, English, French, German, Japanese and Spanish
- Extensive multi-media technical resources to help you
- We investigate all quality concerns to ensure our products perform to the highest standards

If the product does not perform as described on this datasheet, we will offer a refund or replacement. For full details of the Abpromise, please visit <https://www.abcam.co.jp/abpromise> or contact our technical team.

Terms and conditions

- Guarantee only valid for products bought direct from Abcam or one of our authorized distributors