




Anti-CEBP Alpha/CEBPA antibody [15C8] ab15047

[4 References](#) [画像数 1](#)

製品の概要

製品名	Anti-CEBP Alpha/CEBPA antibody [15C8]
製品の詳細	Mouse monoclonal [15C8] to CEBP Alpha/CEBPA
由来種	Mouse
特異性	This antibody may cross react with glutamate--ammonia ligase domain containing 1 protein ((Lengsin) Lens glutamine synthase-like) as it has 8/10 aa identical to the immunogen used to generate ab15047 (this protein is part of the Glutamate synthetase family so its compartmentalization to the cytoplasm) unlike CEDPA which is found in the nucleus.
アプリケーション	適用あり: WB
種交差性	交差種: Human 交差が予測される動物種: Hamster, Cow, Xenopus laevis, Schizosaccharomyces pombe, Zebrafish, Goldfish, Aspergillus nidulans, Neurospora crassa 
免疫原	Synthetic peptide corresponding to Mouse CEBP Alpha/CEBPA aa 1-14. Sequence: MESADFYEVEPRPP (Peptide available as ab39791)  Run BLAST with  Run BLAST with
エピトープ	Amino terminal region.
ポジティブ・コントロール	Transfected hu293T cells.
特記事項	The Life Science industry has been in the grips of a reproducibility crisis for a number of years. Abcam is leading the way in addressing this with our range of recombinant monoclonal antibodies and knockout edited cell lines for gold-standard validation. Please check that this product meets your needs before purchasing. If you have any questions, special requirements or concerns, please send us an inquiry and/or contact our Support team ahead of purchase. Recommended alternatives for this product can be found below, along with publications, customer reviews and Q&As

製品の特性

製品の状態	Liquid
保存方法	Shipped at 4°C. Store at +4°C short term (1-2 weeks). Upon delivery aliquot. Store at -20°C or -

	80°C. Avoid freeze / thaw cycle.
バッファー	Preservative: 0.05% Sodium azide Constituents: 99% PBS, 0.1% BSA
精製度	Protein G purified
ポリモノ	モノクローナル
クローン名	15C8
アイソタイプ	IgG

アプリケーション

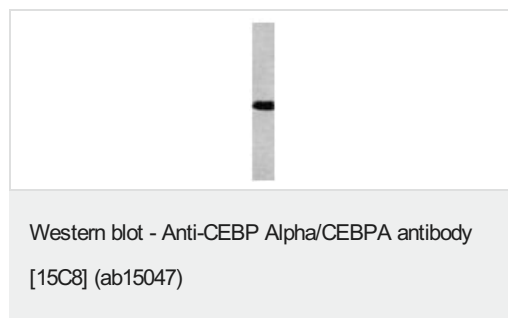
The Abpromise guarantee **Abpromise保証は、** 次のテスト済みアプリケーションにおけるab15047の使用に適用されます
アプリケーションノートには、推奨の開始希釈率がありますが、適切な希釈率につきましてはご検討ください。

アプリケーション	Abreviews	特記事項
WB		Use a concentration of 2 µg/ml. Detects a band of approximately 45 kDa (predicted molecular weight: 45 kDa).

ターゲット情報

機能	C/EBP is a DNA-binding protein that recognizes two different motifs: the CCAAT homology common to many promoters and the enhanced core homology common to many enhancers.
配列類似性	Belongs to the bZIP family. C/EBP subfamily. Contains 1 bZIP domain.
細胞内局在	Nucleus.

画像



Anti-CEBP Alpha/CEBPA antibody [15C8] (ab15047) at 2 µg/ml +
293 cell lysates transfected with CEBP alpha.

Predicted band size: 45 kDa

Please note: All products are "FOR RESEARCH USE ONLY. NOT FOR USE IN DIAGNOSTIC PROCEDURES"

Our Abpromise to you: Quality guaranteed and expert technical support

- Replacement or refund for products not performing as stated on the datasheet
- Valid for 12 months from date of delivery

- Response to your inquiry within 24 hours
- We provide support in Chinese, English, French, German, Japanese and Spanish
- Extensive multi-media technical resources to help you
- We investigate all quality concerns to ensure our products perform to the highest standards

If the product does not perform as described on this datasheet, we will offer a refund or replacement. For full details of the Abpromise, please visit <https://www.abcam.co.jp/abpromise> or contact our technical team.

Terms and conditions

- Guarantee only valid for products bought direct from Abcam or one of our authorized distributors