

Anti-CEACAM1 antibody [EPR4049] ab108397

KO 評価済 リコンビナント RabMAb

7 References 画像数 7

製品の概要

製品名	Anti-CEACAM1 antibody [EPR4049]
製品の詳細	Rabbit monoclonal [EPR4049] to CEACAM1
由来種	Rabbit
アプリケーション	適用あり: WB, IP, IHC-P 適用なし: Flow Cyt
種交差性	交差種: Human
免疫原	Synthetic peptide. This information is proprietary to Abcam and/or its suppliers.
ポジティブ・コントロール	WB: Human fetal liver, A549, SW480, and HepG2 cell lysates; IHC-P: Human kidney clear cell carcinoma tissue. IP: SW480 cells
特記事項	<p>This product is a recombinant monoclonal antibody, which offers several advantages including:</p> <ul style="list-style-type: none"> - High batch-to-batch consistency and reproducibility - Improved sensitivity and specificity - Long-term security of supply - Animal-free production <p>For more information see here.</p> <p>Our RabMAb[®] technology is a patented hybridoma-based technology for making rabbit monoclonal antibodies. For details on our patents, please refer to RabMAb[®] patents.</p> <p>Mouse, Rat: We have preliminary internal testing data to indicate this antibody may not react with these species. Please contact us for more information.</p>

製品の特性

製品の状態	Liquid
保存方法	Shipped at 4°C. Store at -20°C. Stable for 12 months at -20°C.
バッファー	pH: 7.20 Preservative: 0.01% Sodium azide Constituents: PBS, 40% Glycerol, 0.05% BSA
精製度	Protein A purified
ポリ/モノ	モノクローナル

クローン名	EPR4049
アイソタイプ	IgG

アプリケーション

The Abpromise guarantee **Abpromise保証は、** 次のテスト済みアプリケーションにおけるab108397の使用に適用されます
アプリケーションノートには、推奨の開始希釈率がありますが、適切な希釈率につきましてはご確認ください。

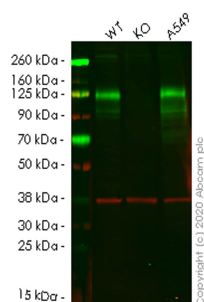
アプリケーション	Abreviews	特記事項
WB		1/10000 - 1/50000. Predicted molecular weight: 58 kDa.
IP		1/10 - 1/100.
IHC-P		1/50 - 1/100. Perform heat mediated antigen retrieval with citrate buffer pH 6 before commencing with IHC staining protocol. See <u>IHC antigen retrieval protocols</u> .

追加情報 Is unsuitable for Flow Cyt.

ターゲット情報

配列類似性	Belongs to the immunoglobulin superfamily. CEA family. Contains 3 Ig-like C2-type (immunoglobulin-like) domains. Contains 1 Ig-like V-type (immunoglobulin-like) domain.
細胞内局在	Secreted; Cell membrane and Cell membrane. Localizes to sites of cell-cell contact.
製品の状態	There are 11 isoforms produced by alternative splicing. Isoform 1 = BGP _a ; CEACAM1-4L; TM1-CEA; Isoform 2 = BGP _g ; CEACAM1-4C1; Isoform 3 = BGP _h ; CEACAM1-3; Isoform 4 = BGP _i ; CEACAM1-3C2; Isoform 5 = BGP _y ; CEACAM1-3AL; Isoform 6 = BGP _b ; CEACAM1-3L; TM2-CEA; Isoform 7 = BGP _x ; CEACAM1-1L; Isoform 8 = BGP _c ; CEACAM1-4S; TM3-CEA; Isoform 9 = BGP _z ; CEACAM1-3AS and Isoform 11 = BGP _d ; CEACAM1-3S.

画像



Western blot - Anti-CEACAM1 antibody [EPR4049] (ab108397)

All lanes : Anti-CEACAM1 antibody [EPR4049] (ab108397) at 1/1000 dilution

Lane 1 : Wild-type A549 cell lysate

Lane 2 : CEACAM1 knockout A549 cell lysate

Lane 3 : A549 cell lysate

Lysates/proteins at 20 µg per lane.

Secondary

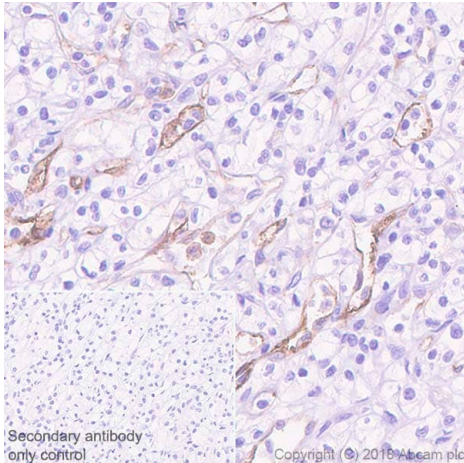
All lanes : Goat anti-Rabbit IgG H&L (IRDye® 800CW) preadsorbed ([ab216773](#)) at 1/10000 dilution

Predicted band size: 58 kDa

Observed band size: 100-180 kDa

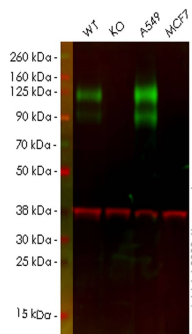
Lanes 1-4: Merged signal (red and green). Green - ab108397 observed at 100-180 kDa. Red - loading control [ab8245](#) observed at 36 kDa.

ab108397 Anti-CEACAM1 antibody [EPR4049] was shown to specifically react with CEACAM1 in wild-type A549 cells. Loss of signal was observed when knockout cell line [ab267046](#) (knockout cell lysate [ab257388](#)) was used. Wild-type and CEACAM1 knockout samples were subjected to SDS-PAGE. ab108397 and Anti-GAPDH antibody [6C5] - Loading Control ([ab8245](#)) were incubated overnight at 4°C at 1 in 1000 dilution and 1 in 20000 dilution respectively. Blots were developed with Goat anti-Rabbit IgG H&L (IRDye® 800CW) preadsorbed ([ab216773](#)) and Goat anti-Mouse IgG H&L (IRDye® 680RD) preadsorbed ([ab216776](#)) secondary antibodies at 1 in 20000 dilution for 1 hour at room temperature before imaging.



Immunohistochemistry (Formalin/PFA-fixed paraffin-embedded sections) - Anti-CEACAM1 antibody [EPR4049] (ab108397)

Immunohistochemistry (Formalin/PFA-fixed paraffin-embedded sections) analysis of Human clear cell carcinoma of kidney tissue sections labeling CEACAM1 with Purified ab108397 at 1:80 dilution (3.3 µg/ml). Heat mediated antigen retrieval was performed using **ab93684** (Tris/EDTA buffer, pH 9.0). ImmunoHistoProbe one step HRP Polymer (ready to use) was used as the secondary antibody. Negative control: PBS instead of the primary antibody. Hematoxylin was used as a counterstain.



Western blot - Anti-CEACAM1 antibody [EPR4049] (ab108397)

All lanes : Anti-CEACAM1 antibody [EPR4049] (ab108397) at 1/1000 dilution

Lane 1 : Wild-type A549 cell lysate

Lane 2 : CEACAM1 knockout A549 cell lysate

Lane 3 : A549 cell lysate

Lane 4 : MCF7 cell lysate

Lysates/proteins at 20 µg per lane.

Secondary

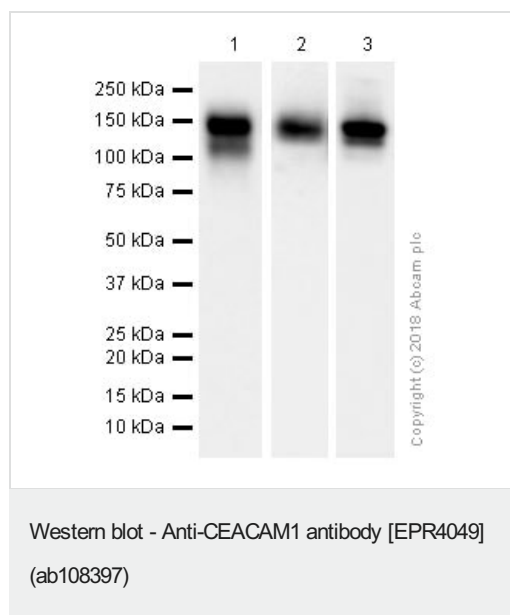
All lanes : Goat anti-Rabbit IgG H&L (IRDye® 800CW) preadsorbed (**ab216773**) at 1/10000 dilution

Predicted band size: 58 kDa

Observed band size: 100-180 kDa

Lanes 1-4: Merged signal (red and green). Green - ab108397 observed at 100-180 kDa. Red - loading control **ab8245** observed at 36 kDa.

ab108397 Anti-CEACAM1 antibody [EPR4049] was shown to specifically react with CEACAM1 in wild-type A549 cells. Loss of signal was observed when knockout cell line **ab267047** (knockout cell lysate **ab257389**) was used. Wild-type and CEACAM1 knockout samples were subjected to SDS-PAGE. ab108397 and Anti-GAPDH antibody [6C5] - Loading Control (**ab8245**) were incubated overnight at 4°C at 1 in 1000 dilution and 1 in 20000 dilution respectively. Blots were developed with Goat anti-Rabbit IgG H&L (IRDye® 800CW) preadsorbed (**ab216773**) and Goat anti-Mouse IgG H&L (IRDye® 680RD) preadsorbed (**ab216776**) secondary antibodies at 1 in 20000 dilution for 1 hour at room temperature before imaging.



All lanes : Anti-CEACAM1 antibody [EPR4049] (ab108397) at 1/10000 dilution (Purified)

Lane 1 : A549 (Human lung carcinoma epithelial cell) whole cell lysates

Lane 2 : SW480 (Human colorectal adenocarcinoma epithelial cell) whole cell lysates

Lane 3 : HepG2 (Human hepatocellular carcinoma epithelial cell) whole cell lysates

Lysates/proteins at 20 µg per lane.

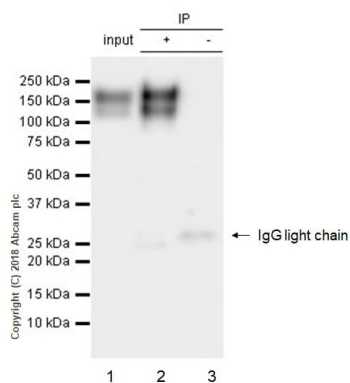
Secondary

All lanes : Goat Anti-Rabbit IgG (HRP) with minimal cross-reactivity with human IgG at 1/2000 dilution

Predicted band size: 58 kDa

Observed band size: 100-180 kDa

The smear and multiple bands are consistent with what have been described in the literature PMID: 17071610, 26448580 and 30050594, due to a variety of splice variants and/or differential glycosylation



Immunoprecipitation - Anti-CEACAM1 antibody
[EPR4049] (ab108397)

ab108397 (purified) at 1:20 dilution (1.5µg) immunoprecipitating CEACAM1 in SW480 whole cell lysate.

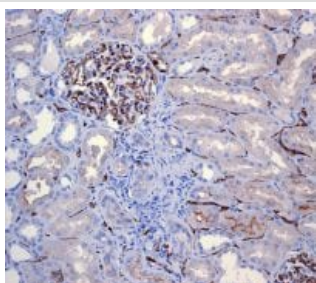
Lane 1 (input): SW480 (Human colorectal adenocarcinoma epithelial cell) whole cell lysate 10µg

Lane 2 (+): ab108397 & SW480 whole cell lysate

Lane 3 (-): Rabbit monoclonal IgG (**ab172730**) instead of ab108397 in SW480 whole cell lysate

For western blotting, VeriBlot for IP Detection Reagent (HRP) (**ab131366**) was used for detection at 1:1000 dilution.

Blocking and diluting buffer: 5% NFDm/TBST.



Immunohistochemistry (Formalin/PFA-fixed paraffin-embedded sections) - Anti-CEACAM1 antibody
[EPR4049] (ab108397)

Unpurified ab108397 at 1/50 dilution staining CEACAM1 in Human kidney tissue by Immunohistochemistry, Paraffin-embedded tissue.

Heat mediated antigen retrieval was performed with citrate buffer pH 6 before commencing with IHC staining protocol.

Why choose a recombinant antibody?



Research with confidence
Consistent and reproducible results



Long-term and scalable supply
Recombinant technology



Success from the first experiment
Confirmed specificity



Ethical standards compliant
Animal-free production

Anti-CEACAM1 antibody [EPR4049] (ab108397)

Please note: All products are "FOR RESEARCH USE ONLY. NOT FOR USE IN DIAGNOSTIC PROCEDURES"

Our Abpromise to you: Quality guaranteed and expert technical support

- Replacement or refund for products not performing as stated on the datasheet
- Valid for 12 months from date of delivery
- Response to your inquiry within 24 hours

- We provide support in Chinese, English, French, German, Japanese and Spanish
- Extensive multi-media technical resources to help you
- We investigate all quality concerns to ensure our products perform to the highest standards

If the product does not perform as described on this datasheet, we will offer a refund or replacement. For full details of the Abpromise, please visit <https://www.abcam.co.jp/abpromise> or contact our technical team.

Terms and conditions

- Guarantee only valid for products bought direct from Abcam or one of our authorized distributors