

### Anti-Cdk6 antibody [EPR4515] ab124821

KO 評価済 リコンビナント RabMAb

★★★★★ **2 Abreviews** **91 References** 画像数 8

#### 製品の概要

|              |   |
|--------------|---|
| 製品名          | Anti-Cdk6 antibody [EPR4515]  |
| 製品の詳細        | Rabbit monoclonal [EPR4515] to Cdk6   |
| 由来種          | Rabbit  |
| 特異性          | Based on the immunogen sequence, we do not expect the antibody to cross-react with other CDK family members. No cross-reactivity testing has been performed.  |
| アプリケーション     | <b>適用あり:</b> ICC/IF, WB, IHC-P, Flow Cyt (Intra)<br><b>適用なし:</b> IP   |
| 種交差性         | <b>交差種:</b> Human   |
| 免疫原          | Synthetic peptide. within Human Cdk6 aa 300 to the C-terminus (C terminal). The exact sequence is proprietary.<br>Database link: <a href="#">Q00534</a>   |
| ポジティブ・コントロール | WB: Jurkat, K562, HAP1, HeLa and 293T cell lysates. IHC-P: Human tonsil tissue. ICC/IF: HeLa and wild-type HAP1 cells.  |
| 特記事項         | This product is a recombinant monoclonal antibody, which offers several advantages including: <ul style="list-style-type: none"> <li>- High batch-to-batch consistency and reproducibility</li> <li>- Improved sensitivity and specificity</li> <li>- Long-term security of supply</li> <li>- Animal-free production</li> </ul> For more information <a href="#">see here</a> .<br>Our RabMAb <sup>®</sup> technology is a patented hybridoma-based technology for making rabbit monoclonal antibodies. For details on our patents, please refer to <a href="#">RabMAb<sup>®</sup> patents</a> .<br>Mouse, Rat: We have preliminary internal testing data to indicate this antibody may not react with these species. Please contact us for more information. |

#### 製品の特性

|       |   |
|-------|---|
| 製品の状態 | Liquid  |
| 保存方法  | Shipped at 4°C. Store at +4°C short term (1-2 weeks). Upon delivery aliquot. Store at -20°C. Stable for 12 months at -20°C. |

|        |  |
|--------|--|
| バッファー  | pH: 7.2<br>Preservative: 0.01% Sodium azide<br>Constituents: 59% PBS, 40% Glycerol (glycerin, glycerine), 0.5% BSA |
| 精製度    | Protein A purified   |
| ポリ/モノ  | モノクローナル  |
| クローン名  | EPR4515  |
| アイソタイプ | IgG  |

## アプリケーション

**The Abpromise guarantee**      **Abpromise保証は、次のテスト済みアプリケーションにおけるab124821の使用に適用されます**  
 アプリケーションノートには、推奨の開始希釈率がありますが、適切な希釈率につきましてはご検討ください。

| アプリケーション         | Abreviews | 特記事項  |
|------------------|-----------|---|
| ICC/IF           |           | 1/500.  |
| WB               | ★★★★★ (1) | 1/50000 - 1/200000. Detects a band of approximately 37 kDa (predicted molecular weight: 37 kDa).                          |
| IHC-P            |           | 1/100 - 1/250. Perform heat mediated antigen retrieval before commencing with IHC staining protocol.                      |
| Flow Cyt (Intra) |           | 1/100 - 1/1000.<br><b>ab172730</b> - Rabbit monoclonal IgG, is suitable for use as an isotype control with this antibody. |

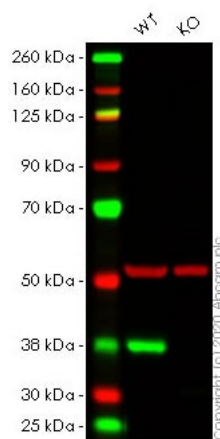
**追加情報**      Is unsuitable for IP.

## ターゲット情報

**機能**      Probably involved in the control of the cell cycle. Interacts with D-type G1 cyclins.

**配列類似性**      Belongs to the protein kinase superfamily. CMGC Ser/Thr protein kinase family. CDC2/CDKX subfamily.  
 Contains 1 protein kinase domain.

## 画像



Western blot - Anti-Cdk6 antibody [EPR4515]  
(ab124821)

**All lanes :** Anti-Cdk6 antibody [EPR4515] (ab124821) at 1/1000 dilution

**Lane 1 :** Wild-type HeLa cell lysate

**Lane 2 :** CDK6 knockout HeLa cell lysate

Lysates/proteins at 20 µg per lane.

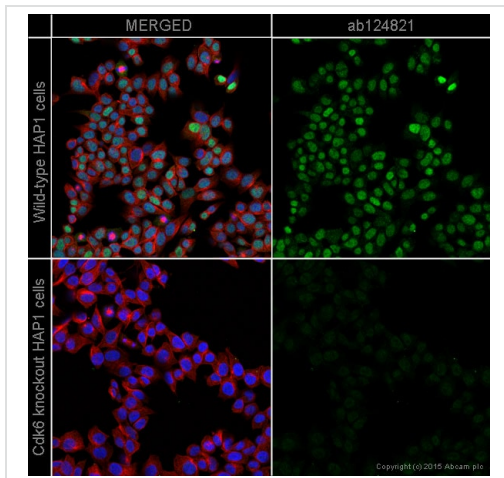
Performed under reducing conditions.

**Predicted band size:** 37 kDa

**Observed band size:** 37 kDa

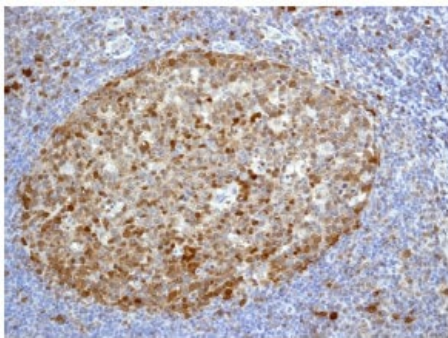
**Lanes 1- 2:** Merged signal (red and green). Green - ab124821 observed at 37 kDa. Red - Anti-alpha Tubulin antibody [DM1A] - Loading Control ([ab7291](#)) observed at 50 kDa.

ab124821 was shown to react with Cdk6 in wild-type HeLa cells in western blot. Loss of signal was observed when knockout cell line [ab266059](#) (knockout cell lysate [ab257088](#)) was used. Wild-type HeLa and CDK6 knockout HeLa cell lysates were subjected to SDS-PAGE. Membrane was blocked for 1 hour at room temperature in 0.1% TBST with 3% non-fat dried milk. ab124821 and Anti-alpha Tubulin antibody [DM1A] - Loading Control ([ab7291](#)) overnight at 4°C at a 1 in 1000 dilution and a 1 in 20000 dilution respectively. Blots were developed with Goat anti-Rabbit IgG H&L (IRDye®800CW) preadsorbed ([ab216773](#)) and Goat anti-Mouse IgG H&L (IRDye®680RD) preadsorbed ([ab216776](#)) secondary antibodies at 1 in 20000 dilution for 1 hour at room temperature before imaging.



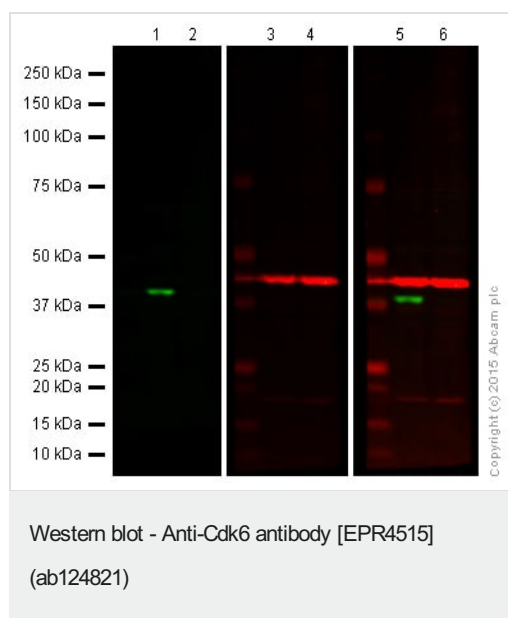
Immunocytochemistry/ Immunofluorescence - Anti-Cdk6 antibody [EPR4515] (ab124821)

ab124821 staining Cdk6 in wild-type HAP1 cells (top panel) and Cdk6 knockout HAP1 cells (bottom panel). The cells were fixed with 4% formaldehyde (10min), permeabilized with 0.1% Triton X-100 for 5 minutes and then blocked with 1% BSA/10% normal goat serum/0.3M glycine in 0.1% PBS-Tween for 1h. The cells were then incubated with ab124821 at 1/500 dilution and **ab195889** at 1/250 dilution (shown in pseudo colour red) overnight at +4°C, followed by a further incubation at room temperature for 1h with a goat secondary antibody to Rabbit IgG (Alexa Fluor® 488) (**ab150081**) at 2 µg/ml (shown in green). Nuclear DNA was labelled in blue with DAPI.



Immunohistochemistry (Formalin/PFA-fixed paraffin-embedded sections) - Anti-Cdk6 antibody [EPR4515] (ab124821)

ab124821 at 1/100 dilution, staining Cdk6 in Formalin fixed Paraffin-embedded Human tonsil tissue by Immunohistochemistry. Heat mediated antigen retrieval was performed with 0.01M citrate buffer, pH 6.0.



**Lanes 1-2 :** Anti-Cdk6 antibody [EPR4515] (ab124821) at 1/10000 dilution

**Lanes 3-4 :** Anti-beta Actin antibody [mAbcam 8226] - Loading Control ([ab8226](#)) at 1/1000 dilution

**Lanes 1 & 3 & 5 :** Wild-type HAP1 cell lysate

**Lanes 2 & 4 & 6 :** CDK6 knockout HAP1 cell lysate

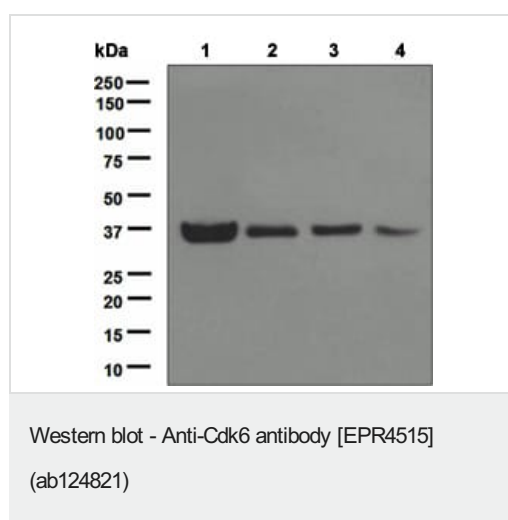
Lysates/proteins at 20 µg per lane.

**Predicted band size:** 37 kDa

**Lanes 1 and 2:** Green signal from target - ab124821 observed at 37 kDa

**Lanes 3 and 4:** Red signal from loading control - [ab8226](#) observed at 42 kDa

**Lanes 5 and 6:** Merged (red and green) signal  
ab124821 was shown to specifically react with CDK6 when CDK6 knockout samples were used. Wild-type and CDK6 knockout samples were subjected to SDS-PAGE. ab124821 and [ab8226](#) (loading control to beta actin) were diluted at 1/10 000 and 1/1000 respectively and incubated overnight at 4°C. Blots were developed with Goat anti-Rabbit IgG H&L (IRDye® 800CW) preadsorbed ([ab216773](#)) and Goat anti-Mouse IgG H&L (IRDye® 680RD) preadsorbed ([ab216776](#)) secondary antibodies at 1/10,000 dilution for 1 h at room temperature before imaging.



**All lanes :** Anti-Cdk6 antibody [EPR4515] (ab124821) at 1/1000 dilution

**Lane 1 :** Jurkat cell lysate

**Lane 2 :** K562 cell lysate

**Lane 3 :** HeLa cell lysate

**Lane 4 :** 293T cell lysate

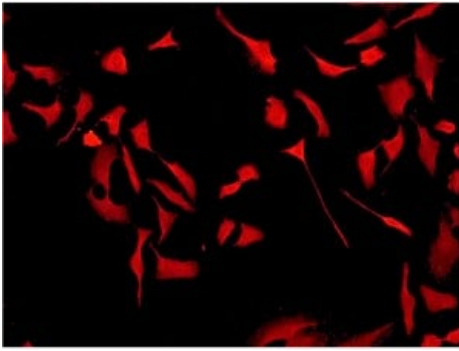
Lysates/proteins at 10 µg per lane.

**Secondary**

**All lanes :** Goat-anti-rabbit HRP at 1/2000 dilution

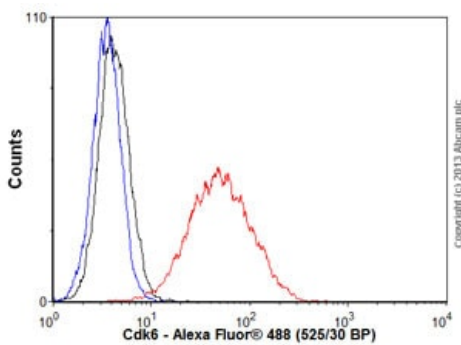
**Predicted band size:** 37 kDa

**Observed band size:** 37 kDa



Immunocytochemistry/ Immunofluorescence - Anti-Cdk6 antibody [EPR4515] (ab124821)

ICC/IF image of ab124821 at 1/100 dilution, staining Cdk6 in HeLa cells.



Flow Cytometry (Intracellular) - Anti-Cdk6 antibody [EPR4515] (ab124821)

Overlay histogram showing HeLa cells stained with ab124821 (red line). The cells were fixed with 80% methanol (5 min) and then permeabilized with 0.1% PBS-Tween for 20 min. The cells were then incubated in 1x PBS / 10% normal goat serum / 0.3M glycine to block non-specific protein-protein interactions followed by the antibody (ab124821, 1/1000 dilution) for 30 min at 22°C. The secondary antibody used was Alexa Fluor® 488 goat anti-rabbit IgG (H&L) (**ab150077**) at 1/2000 dilution for 30 min at 22°C. Isotype control antibody (black line) was rabbit IgG (monoclonal) (0.1 µg/1x10<sup>6</sup> cells) used under the same conditions. Unlabelled sample (blue line) was also used as a control. Acquisition of >5,000 events were collected using a 20mW Argon ion laser (488nm) and 525/30 bandpass filter.

Why choose a recombinant antibody?



**Research with confidence**  
Consistent and reproducible results



**Long-term and scalable supply**  
Recombinant technology



**Success from the first experiment**  
Confirmed specificity



**Ethical standards compliant**  
Animal-free production

Anti-Cdk6 antibody [EPR4515] (ab124821)

**Please note:** All products are "FOR RESEARCH USE ONLY. NOT FOR USE IN DIAGNOSTIC PROCEDURES"

### **Our Abpromise to you: Quality guaranteed and expert technical support**

---

- Replacement or refund for products not performing as stated on the datasheet
- Valid for 12 months from date of delivery
- Response to your inquiry within 24 hours
  
- We provide support in Chinese, English, French, German, Japanese and Spanish
- Extensive multi-media technical resources to help you
- We investigate all quality concerns to ensure our products perform to the highest standards

If the product does not perform as described on this datasheet, we will offer a refund or replacement. For full details of the Abpromise, please visit <https://www.abcam.co.jp/abpromise> or contact our technical team.

### **Terms and conditions**

---

- Guarantee only valid for products bought direct from Abcam or one of our authorized distributors