

# Anti-CDK2 (phospho T14) antibody [EP2234Y] ab68265

リコンビナント **RabMAb**

**11 References**    **画像数 6**

### 製品の概要

製品名	Anti-CDK2 (phospho T14) antibody [EP2234Y]
製品の詳細	Rabbit monoclonal [EP2234Y] to CDK2 (phospho T14)
由来種	Rabbit
特異性	<p>This antibody detects Cdk2 phosphorylated on Threonine 14.</p> <p>The Chinese hamster recommendation is based on the WB result. We do not guarantee IHC-P for Chinese hamster.</p>
アプリケーション	<p><b>適用あり:</b> WB, IHC-P</p> <p><b>適用なし:</b> Flow Cyt</p>
種交差性	<b>交差種:</b> Mouse, Rat, Human, Chinese hamster
免疫原	Synthetic peptide. This information is proprietary to Abcam and/or its suppliers.
ポジティブ・コントロール	WB: HeLa, C2C12 (Mouse myoblasts myoblast) treated with 1mM hydroxyurea for 16 hours, C6 (Rat glial tumor glial cell) treated with 1mM hydroxyurea for 16 hours, CHO-S (Chinese hamster ovary epithelial cell) whole cell lysates. IHC: Human ovarian carcinoma, mouse and rat stomach tissues.
特記事項	<p>This product is a recombinant monoclonal antibody, which offers several advantages including:</p> <ul style="list-style-type: none"><li>- High batch-to-batch consistency and reproducibility</li><li>- Improved sensitivity and specificity</li><li>- Long-term security of supply</li><li>- Animal-free production</li></ul> <p>For more information <a href="#">see here</a>.</p> <p>Our RabMAb<sup>®</sup> technology is a patented hybridoma-based technology for making rabbit monoclonal antibodies. For details on our patents, please refer to <a href="#">RabMAb<sup>®</sup> patents</a>.</p> <p>Mouse: We have preliminary internal testing data to indicate this antibody may not react with this species. Please contact us for more information.</p>

### 製品の特性

製品の状態	Liquid
保存方法	Shipped at 4°C. Upon delivery aliquot and store at -20°C. Avoid freeze / thaw cycles.

バッファー	pH: 7.20 Preservative: 0.01% Sodium azide Constituents: 0.05% BSA, 40% Glycerol (glycerin, glycerine), 59% PBS
精製度	Protein A purified
ポリ/モノ	モノクローナル
クローン名	EP2234Y
アイソタイプ	IgG

#### アプリケーション

**The Abpromise guarantee**      **Abpromise保証は、次のテスト済みアプリケーションにおけるab68265の使用に適用されます**  
 アプリケーションノートには、推奨の開始希釈率がありますが、適切な希釈率につきましてはご検討ください。

アプリケーション	Abreviews	特記事項
WB		1/1000 - 1/10000. Detects a band of approximately 34 kDa (predicted molecular weight: 34 kDa).
IHC-P		1/1000. Perform heat mediated antigen retrieval before commencing with IHC staining protocol. The Chinese hamster recommendation is based on the WB result. We do not guarantee IHC-P for Chinese hamster.

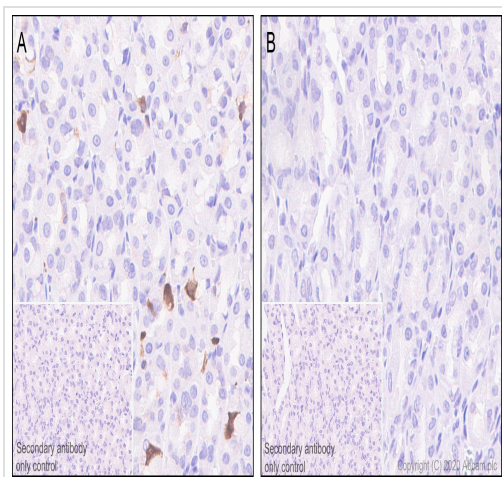
**追加情報**      Is unsuitable for Flow Cyt.

#### ターゲット情報

**機能**      Involved in the control of the cell cycle. Interacts with cyclins A, B1, B3, D, or E. Activity of CDK2 is maximal during S phase and G2.

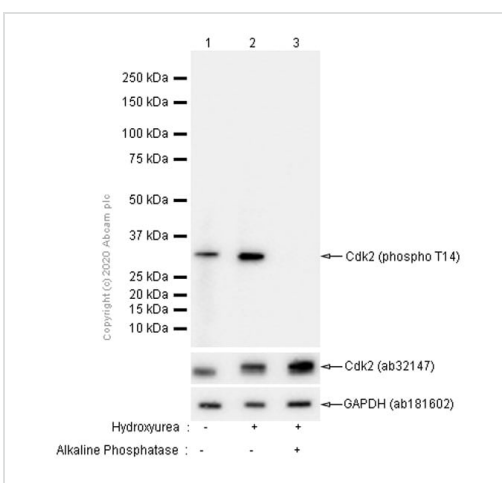
**配列類似性**      Belongs to the protein kinase superfamily. CMGC Ser/Thr protein kinase family. CDC2/CDKX subfamily.  
 Contains 1 protein kinase domain.

#### 画像



Immunohistochemistry (Formalin/PFA-fixed paraffin-embedded sections) - Anti-CDK2 (phospho T14) antibody [EP2234Y] (ab68265)

Immunohistochemistry (Formalin/PFA-fixed paraffin-embedded sections) analysis of rat stomach tissue sections labeling CDK2 with Purified 68265 at 1:1000 dilution (0.24 µg/ml). Heat mediated antigen retrieval using Bond™ Epitope Retrieval Solution 2 (pH 9.0). Rabbit specific IHC polymer detection kit HRP/DAB ([ab209101](#)) was used as the secondary antibody. Negative control: PBS instead of the primary antibody. Hematoxylin was used as a counterstain.



Western blot - Anti-CDK2 (phospho T14) antibody [EP2234Y] (ab68265)

**All lanes** : Anti-CDK2 (phospho T14) antibody [EP2234Y] (ab68265) at 1/1000 dilution (Purified)

**Lane 1** : Untreated HeLa (Human cervix adenocarcinoma epithelial cell) whole cell lysate

**Lane 2** : HeLa (Human cervix adenocarcinoma epithelial cell) starved overnight, then treated with 3mM hydroxyurea for 24 hours whole cell lysate

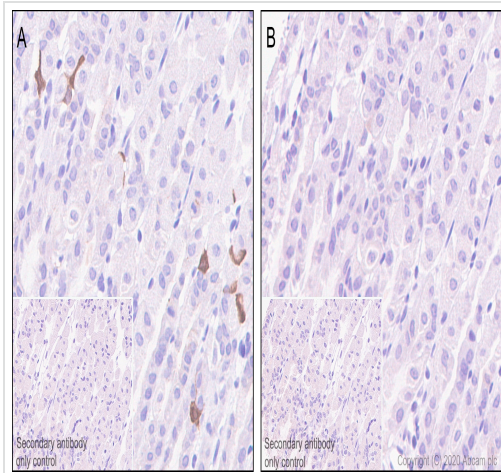
**Lane 3** : HeLa (Human cervix adenocarcinoma epithelial cell) starved overnight, then treated with 3mM hydroxyurea for 24 hours whole cell lysate, then the membrane treated with Alkaline Phosphatase for 1 hour

Lysates/proteins at 20 µg per lane.

### Secondary

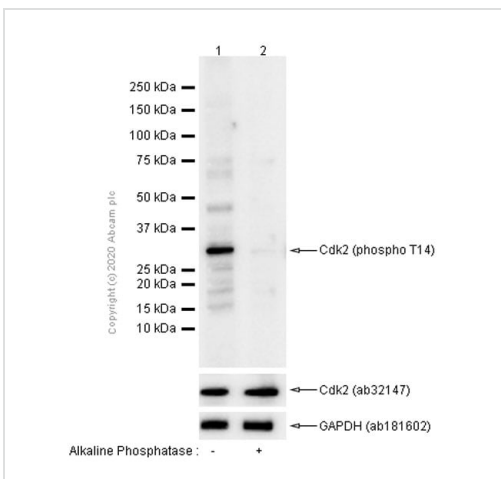
**All lanes** : Goat Anti-Rabbit IgG H&L (HRP) ([ab97051](#)) at 1/20000 dilution

**Predicted band size: 34 kDa**



Immunohistochemistry (Formalin/PFA-fixed paraffin-embedded sections) - Anti-CDK2 (phospho T14) antibody [EP2234Y] (ab68265)

Immunohistochemistry (Formalin/PFA-fixed paraffin-embedded sections) analysis of mouse stomach tissue sections labeling CDK2 with Purified 68265 at 1:1000 dilution (0.24 µg/ml). Heat mediated antigen retrieval using Bond™ Epitope Retrieval Solution 2 (pH 9.0) . Rabbit specific IHC polymer detection kit HRP/DAB (**ab209101**) was used as the secondary antibody. Negative control: PBS instead of the primary antibody. Hematoxylin was used as a counterstain.



Western blot - Anti-CDK2 (phospho T14) antibody [EP2234Y] (ab68265)

**All lanes :** Anti-CDK2 (phospho T14) antibody [EP2234Y] (ab68265) at 1/1000 dilution (Purified)

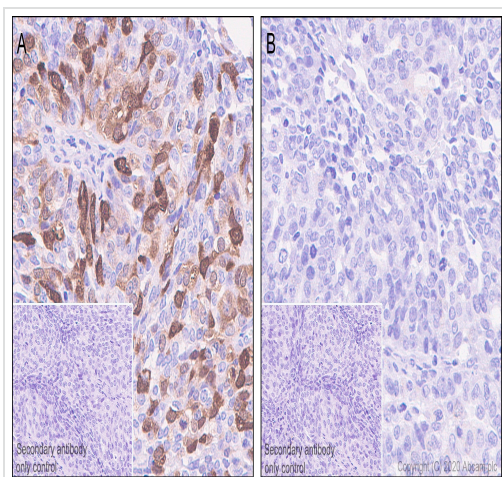
**Lane 1 :** CHO-S (Chinese hamster ovary epithelial cell) whole cell lysate

**Lane 2 :** CHO-S (Chinese hamster ovary epithelial cell) whole cell lysate, then the membrane treated with Alkaline Phosphatase for 1 hour

### Secondary

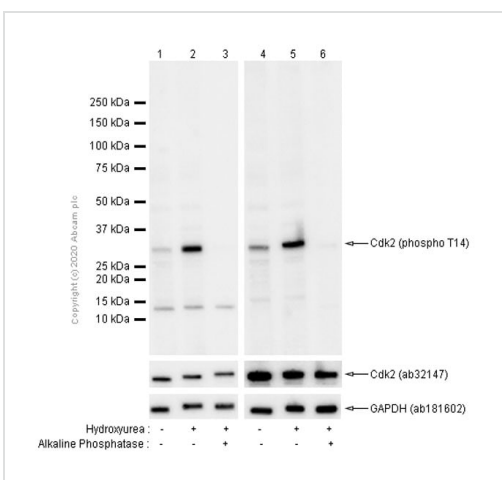
**All lanes :** Goat Anti-Rabbit IgG H&L (HRP) (**ab97051**) at 1/20000 dilution

**Predicted band size: 34 kDa**



Immunohistochemistry (Formalin/PFA-fixed paraffin-embedded sections) - Anti-CDK2 (phospho T14) antibody [EP2234Y] (ab68265)

Immunohistochemistry (Formalin/PFA-fixed paraffin-embedded sections) analysis of human ovarian carcinoma tissue sections labeling CDK2 with Purified 68265 at 1:1000 dilution (0.24 µg/ml). Heat mediated antigen retrieval using Bond™ Epitope Retrieval Solution 2 (pH 9.0) . Rabbit specific IHC polymer detection kit HRP/DAB (**ab209101**) was used as the secondary antibody. Negative control: PBS instead of the primary antibody. Hematoxylin was used as a counterstain.



Western blot - Anti-CDK2 (phospho T14) antibody [EP2234Y] (ab68265)

**All lanes** : Anti-CDK2 (phospho T14) antibody [EP2234Y] (ab68265) at 1/1000 dilution (Purified)

**Lane 1** : Untreated C6 (Rat glial tumor glial cell) whole cell lysate

**Lane 2** : C6 (Rat glial tumor glial cell) treated with 1mM hydroxyurea for 16 hours whole cell lysate

**Lane 3** : C6 (Rat glial tumor glial cell) treated with 1mM hydroxyurea for 16 hours whole cell lysate, then the membrane treated with Alkaline Phosphatase for 1 hour

**Lane 4** : Untreated C2C12 (Mouse myoblasts myoblast) whole cell lysate

**Lane 5** : C2C12 (Mouse myoblasts myoblast) treated with 1mM hydroxyurea for 16 hours whole cell lysate

**Lane 6** : C2C12 (Mouse myoblasts myoblast) treated with 1mM hydroxyurea for 16 hours whole cell lysate, then the membrane treated with Alkaline Phosphatase for 1 hour

Lysates/proteins at 15 µg per lane.

## Secondary

**All lanes** : Goat Anti-Rabbit IgG H&L (HRP) (**ab97051**) at 1/20000 dilution

**Predicted band size:** 34 kDa

**Please note:** All products are "FOR RESEARCH USE ONLY. NOT FOR USE IN DIAGNOSTIC PROCEDURES"

### **Our Abpromise to you: Quality guaranteed and expert technical support**

---

- Replacement or refund for products not performing as stated on the datasheet
- Valid for 12 months from date of delivery
- Response to your inquiry within 24 hours
- We provide support in Chinese, English, French, German, Japanese and Spanish
- Extensive multi-media technical resources to help you
- We investigate all quality concerns to ensure our products perform to the highest standards

If the product does not perform as described on this datasheet, we will offer a refund or replacement. For full details of the Abpromise, please visit <https://www.abcam.co.jp/abpromise> or contact our technical team.

### **Terms and conditions**

---

- Guarantee only valid for products bought direct from Abcam or one of our authorized distributors