

### Anti-CDK1 (phospho T161) antibody ab47329

★★★★★ [2 Abreviews](#) [6 References](#) [画像数 2](#)

#### 製品の概要

|              |  |
|--------------|--|
| 製品名          | Anti-CDK1 (phospho T161) antibody  |
| 製品の詳細        | Rabbit polyclonal to CDK1 (phospho T161)   |
| 由来種          | Rabbit   |
| アプリケーション     | <b>適用あり:</b> WB, IHC-P   |
| 種交差性         | <b>交差種:</b> Human  |
| 免疫原          | Synthetic peptide corresponding to Human CDK1 aa 100-200 (phospho T161).<br>Database link: <a href="#">P06493</a>  |
| ポジティブ・コントロール | WB: COLO, K362 cell extract. IHC-P: Human breast carcinoma tissue.   |
| 特記事項         | <p>This antibody detects CDC2 only when phosphorylated at Threonine 161.</p> <p>The Life Science industry has been in the grips of a reproducibility crisis for a number of years. Abcam is leading the way in addressing this with our range of recombinant monoclonal antibodies and knockout edited cell lines for gold-standard validation. Please check that this product meets your needs before purchasing.</p> <p>If you have any questions, special requirements or concerns, please send us an inquiry and/or contact our Support team ahead of purchase. Recommended alternatives for this product can be found below, along with publications, customer reviews and Q&amp;As</p> |

#### 製品の特性

|           |   |
|-----------|---|
| 製品の状態     | Liquid  |
| 保存方法      | Shipped at 4°C. Store at -20°C. Stable for 12 months at -20°C.  |
| バッファー     | pH: 7.40<br>Preservative: 0.02% Sodium azide<br>Constituents: PBS, 50% Glycerol, 0.87% Sodium chloride  |
| 精製度       | Immunogen affinity purified   |
| 特記事項 (精製) | The antibody was affinity-purified using epitope-specific phosphopeptide. The antibody against non-phosphopeptide was removed by chromatography using non-phosphopeptide corresponding to the phosphorylation site. |
| 一次抗体 備考   | This antibody detects CDC2 only when phosphorylated at Threonine 161.   |

ポリモノ  
アイソタイプ

ポリクローナル  
IgG

## アプリケーション

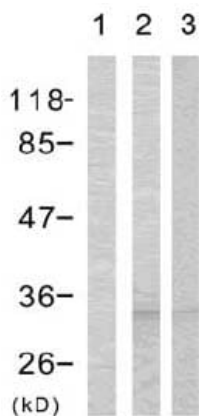
**The Abpromise guarantee**      **Abpromise保証は、** 次のテスト済みアプリケーションにおけるab47329の使用に適用されます  
アプリケーションノートには、推奨の開始希釈率がありますが、適切な希釈率につきましてはご検討ください。

| アプリケーション | Abreviews | 特記事項   |
|----------|-----------|--|
| WB       | ★★★★☆ (1) | 1/500 - 1/1000. Detects a band of approximately 34 kDa (predicted molecular weight: 34 kDa). |
| IHC-P    |           | Use at an assay dependent concentration.   |

## ターゲット情報

|       |   |
|-------|---|
| 機能    | Plays a key role in the control of the eukaryotic cell cycle. It is required in higher cells for entry into S-phase and mitosis. p34 is a component of the kinase complex that phosphorylates the repetitive C-terminus of RNA polymerase II.   |
| 組織特異性 | Isoform 2 is found in breast cancer tissues.  |
| 配列類似性 | Belongs to the protein kinase superfamily. CMGC Ser/Thr protein kinase family. CDC2/CDKX subfamily.<br>Contains 1 protein kinase domain.  |
| 細胞内局在 | Nucleus.  |
| 製品の状態 | CDK1 can be located to the Nucleus, cytoplasm and Mitochondria. It's cytoplasmic during interphase and reversibly translocated from cytoplasm to the nucleus when phosphorylated before G2-M transition when associated with cyclin-B1. Accumulates in mitochondria in G2-arrested cells upon DNA-damage. |

## 画像



Western blot - Anti-CDK1 (phospho T161) antibody (ab47329)

**All lanes :** Anti-CDK1 (phospho T161) antibody (ab47329) at 1/500 dilution

**Lane 1 :** COLO cell extract preincubated with immunogenic phospho-peptide. with phosphopeptide at 1 µg/ml

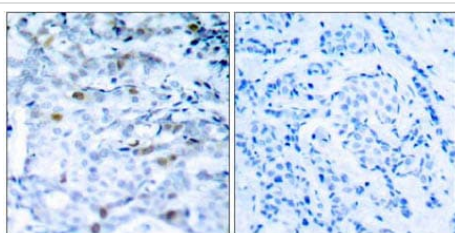
**Lane 2 :** COLO cell extract, untreated.

**Lane 3 :** K362 cell extract

Lysates/proteins at 30 µg per lane.

**Predicted band size:** 34 kDa

**Observed band size:** 34 kDa



Immunohistochemistry (Formalin/PFA-fixed paraffin-embedded sections) - Anti-CDK1 (phospho T161) antibody (ab47329)

ab47329 staining human breast carcinoma tissue by IHC-P (left hand panel). The right hand panel shows staining in the presence of synthesized phospho-peptide using Alkaline phosphatase Goat anti rabbit IgG (H+L) secondary antibody.

**Please note:** All products are "FOR RESEARCH USE ONLY. NOT FOR USE IN DIAGNOSTIC PROCEDURES"

### Our Abpromise to you: Quality guaranteed and expert technical support

- Replacement or refund for products not performing as stated on the datasheet
- Valid for 12 months from date of delivery
- Response to your inquiry within 24 hours
- We provide support in Chinese, English, French, German, Japanese and Spanish
- Extensive multi-media technical resources to help you
- We investigate all quality concerns to ensure our products perform to the highest standards

If the product does not perform as described on this datasheet, we will offer a refund or replacement. For full details of the Abpromise, please visit <https://www.abcam.co.jp/abpromise> or contact our technical team.

### Terms and conditions

- Guarantee only valid for products bought direct from Abcam or one of our authorized distributors