


### Anti-CDK1 (phospho T14) antibody ab58509

[3 References](#) [画像数 3](#)

#### 製品の概要

---

製品名	Anti-CDK1 (phospho T14) antibody
製品の詳細	Rabbit polyclonal to CDK1 (phospho T14)
由来種	Rabbit
特異性	ab58509 peptide sequence is 100% identical to the sequence of CDK1 and CDK2. Therefore, this antibody is predicted to recognize both proteins.  Detects endogenous levels of CDC2 only when phosphorylated at threonine 14.
アプリケーション	<b>適用あり:</b> WB, ICC/IF
種交差性	<b>交差種:</b> Human, African green monkey <b>交差が予測される動物種:</b> Mouse, Rat 
免疫原	Synthetic peptide corresponding to Human CDK1 aa 1-100 (phospho T14). Database link: <a href="#">P06493</a>
特記事項	The Life Science industry has been in the grips of a reproducibility crisis for a number of years. Abcam is leading the way in addressing this with our range of recombinant monoclonal antibodies and knockout edited cell lines for gold-standard validation. Please check that this product meets your needs before purchasing.  If you have any questions, special requirements or concerns, please send us an inquiry and/or contact our Support team ahead of purchase. Recommended alternatives for this product can be found below, along with publications, customer reviews and Q&As

#### 製品の特性

---

製品の状態	Liquid
保存方法	Shipped at 4°C. Upon delivery aliquot. Store at -20°C. Avoid freeze / thaw cycle. Stable for 12 months at -20°C.
バッファー	pH: 7.40 Preservative: 0.02% Sodium azide Constituents: PBS, 50% Glycerol (glycerin, glycerine), 0.87% Sodium chloride
精製度	Immunogen affinity purified
特記事項 (精製)	Affinity-purified from rabbit antiserum by affinity-chromatography using epitope-specific phosphopeptide. The antibody against non-phosphopeptide was removed by chromatography using non-phosphopeptide corresponding to the phosphorylation site.

ポリモノ	ポリクローナル
アイソタイプ	IgG

## アプリケーション

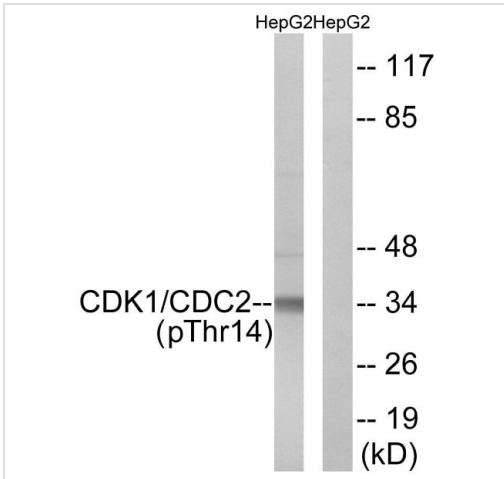
The Abpromise guarantee **Abpromise保証は、次のテスト済みアプリケーションにおけるab58509の使用に適用されます**  
アプリケーションノートには、推奨の開始希釈率がありますが、適切な希釈率につきましてはご検討ください。

アプリケーション	Abreviews	特記事項
WB		1/500 - 1/1000. Detects a band of approximately 32 kDa (predicted molecular weight: 34 kDa).
ICC/IF		1/100 - 1/500.

## ターゲット情報

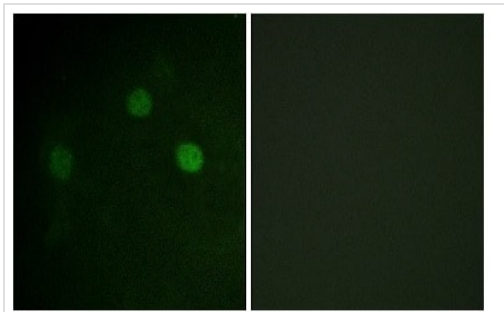
機能	Plays a key role in the control of the eukaryotic cell cycle. It is required in higher cells for entry into S-phase and mitosis. p34 is a component of the kinase complex that phosphorylates the repetitive C-terminus of RNA polymerase II.
組織特異性	Isoform 2 is found in breast cancer tissues.
配列類似性	Belongs to the protein kinase superfamily. CMGC Ser/Thr protein kinase family. CDC2/CDKX subfamily. Contains 1 protein kinase domain.
細胞内局在	Nucleus.
製品の状態	CDK1 can be located to the Nucleus, cytoplasm and Mitochondria. It's cytoplasmic during interphase and reversibly translocated from cytoplasm to the nucleus when phosphorylated before G2-M transition when associated with cyclin-B1. Accumulates in mitochondria in G2-arrested cells upon DNA-damage.

## 画像



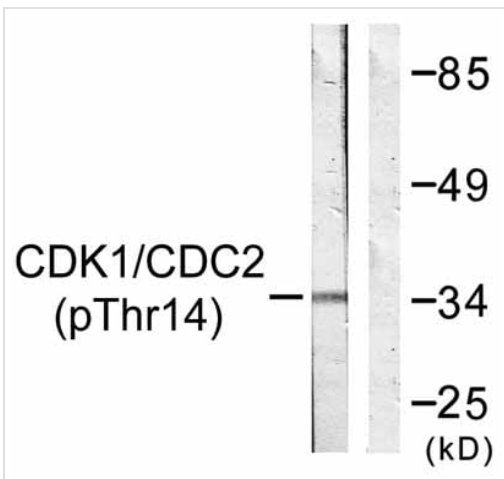
Western blot - Anti-CDK1 (phospho T14) antibody (ab58509)

Western blot analysis of lysates from HepG2 cells treated with Forskolin 40nM for 30 mins, using CDK1 (phospho T14) Antibody (ab58509). The lane on the right is blocked with the phospho peptide.



Immunocytochemistry/ Immunofluorescence - Anti-CDK1 (phospho T14) antibody (ab58509)

Immunofluorescence analysis of COS7 cells using ab58509 at 1/1000 dilution.



Western blot - Anti-CDK1 (phospho T14) antibody (ab58509)

**All lanes :** Anti-CDK1 (phospho T14) antibody (ab58509) at 1/500 dilution

**Lane 1 :** Extracts from HepG2 cells, treated with Forskolin (40nM, 30mins)

**Lane 2 :** Extracts from HepG2 cells, treated with Forskolin (40nM, 30mins), plus immunising peptide

**Predicted band size:** 34 kDa

## **Our Abpromise to you: Quality guaranteed and expert technical support**

---

- Replacement or refund for products not performing as stated on the datasheet
- Valid for 12 months from date of delivery
- Response to your inquiry within 24 hours
  
- We provide support in Chinese, English, French, German, Japanese and Spanish
- Extensive multi-media technical resources to help you
- We investigate all quality concerns to ensure our products perform to the highest standards

If the product does not perform as described on this datasheet, we will offer a refund or replacement. For full details of the Abpromise, please visit <https://www.abcam.co.jp/abpromise> or contact our technical team.

## **Terms and conditions**

---

- Guarantee only valid for products bought direct from Abcam or one of our authorized distributors