


Anti-CDC7 antibody [EPR4730] ab108332

リコンビナント RabMAb

[1 Abreviews](#) [3 References](#) [画像数 3](#)

製品の概要

製品名	Anti-CDC7 antibody [EPR4730]
製品の詳細	Rabbit monoclonal [EPR4730] to CDC7
由来種	Rabbit
アプリケーション	適用あり: Flow Cyt (Intra), WB 適用なし: ICC/IF, IHC-P or IP
種交差性	交差種: Human 交差が予測される動物種: Mouse, Rat 
免疫原	Synthetic peptide. This information is proprietary to Abcam and/or its suppliers.
ポジティブ・コントロール	Jurkat, HeLa, and PC3 cell lysates; Jurkat cells.
特記事項	This product is a recombinant monoclonal antibody, which offers several advantages including: <ul style="list-style-type: none"> - High batch-to-batch consistency and reproducibility - Improved sensitivity and specificity - Long-term security of supply - Animal-free production For more information see here . Our RabMAb [®] technology is a patented hybridoma-based technology for making rabbit monoclonal antibodies. For details on our patents, please refer to RabMAb[®] patents .

製品の特性

製品の状態	Liquid
保存方法	Shipped at 4°C. Store at -20°C. Stable for 12 months at -20°C.
バッファー	pH: 7.20 Preservative: 0.05% Sodium azide Constituents: 0.1% BSA, 40% Glycerol (glycerin, glycerine), 9.85% Tris glycine, 50% Tissue culture supernatant
精製度	Tissue culture supernatant
ポリ/モノ	モノクローナル
クローン名	EPR4730

アイソタイプ

IgG

アプリケーション

The Abpromise guarantee **Abpromise保証は、次のテスト済みアプリケーションにおけるab108332の使用に適用されず**
アプリケーションノートには、推奨の開始希釈率がありますが、適切な希釈率につきましてはご検討ください。

アプリケーション	Abreviews	特記事項
Flow Cyt (Intra)		1/100 - 1/500. ab172730 - Rabbit monoclonal IgG, is suitable for use as an isotype control with this antibody.
WB		1/1000 - 1/10000. Detects a band of approximately 64 kDa (predicted molecular weight: 64 kDa).

追加情報

Is unsuitable for ICC/IF,IHC-P or IP.

ターゲット情報

機能

Seems to phosphorylate critical substrates that regulate the G1/S phase transition and/or DNA replication. Can phosphorylates MCM2 and MCM3.

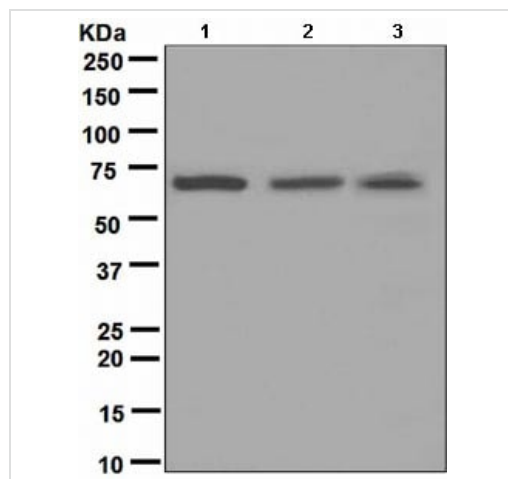
配列類似性

Belongs to the protein kinase superfamily. Ser/Thr protein kinase family. CDC7 subfamily. Contains 1 protein kinase domain.

細胞内局在

Nucleus.

画像



Western blot - Anti-CDC7 antibody [EPR4730]
(ab108332)

All lanes : Anti-CDC7 antibody [EPR4730] (ab108332) at 1/1000 dilution

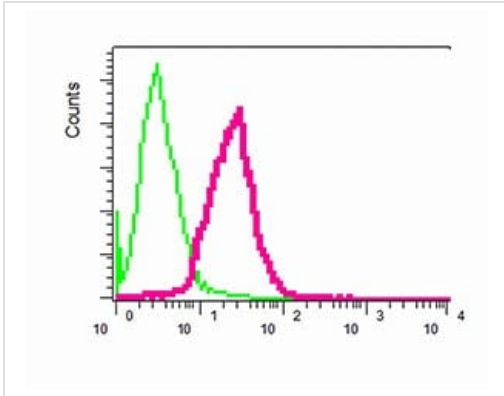
Lane 1 : Jurkat cell lysate

Lane 2 : HeLa cell lysate

Lane 3 : PC3 cell lysate

Lysates/proteins at 10 µg per lane.

Predicted band size: 64 kDa



ab108332, at 1/100 dilution, staining CDC7 in permeabilized Jurkat cells by intracellular flow cytometry (red). Rabbit IgG (green).

Flow Cytometry (Intracellular) - Anti-CDC7 antibody [EPR4730] (ab108332)

Why choose a recombinant antibody?

 <p>Research with confidence Consistent and reproducible results</p>	 <p>Long-term and scalable supply Recombinant technology</p>
 <p>Success from the first experiment Confirmed specificity</p>	 <p>Ethical standards compliant Animal-free production</p>

Anti-CDC7 antibody [EPR4730] (ab108332)

Please note: All products are "FOR RESEARCH USE ONLY. NOT FOR USE IN DIAGNOSTIC PROCEDURES"

Our Abpromise to you: Quality guaranteed and expert technical support

- Replacement or refund for products not performing as stated on the datasheet
- Valid for 12 months from date of delivery
- Response to your inquiry within 24 hours

- We provide support in Chinese, English, French, German, Japanese and Spanish
- Extensive multi-media technical resources to help you
- We investigate all quality concerns to ensure our products perform to the highest standards

If the product does not perform as described on this datasheet, we will offer a refund or replacement. For full details of the Abpromise, please visit <https://www.abcam.co.jp/abpromise> or contact our technical team.

Terms and conditions

- Guarantee only valid for products bought direct from Abcam or one of our authorized distributors