

Anti-Cdc6 (phospho S54) antibody [EPR759Y] ab75809

リコンビナント RabMAb

4 References 画像数 5

製品の概要

製品名	Anti-Cdc6 (phospho S54) antibody [EPR759Y]
製品の詳細	Rabbit monoclonal [EPR759Y] to Cdc6 (phospho S54)
由来種	Rabbit
アプリケーション	適用あり: WB, ICC/IF, Dot blot 適用なし: Flow Cyt, IHC-P or IP
種交差性	交差種: Human
免疫原	Synthetic peptide. This information is proprietary to Abcam and/or its suppliers.
ポジティブ・コントロール	WB: Raji + FBS cell lysates. ICC: HeLa cells. Dot Blot: Cdc6 (pS54) phospho peptide.
特記事項	<p>This product is a recombinant monoclonal antibody, which offers several advantages including:</p> <ul style="list-style-type: none">- High batch-to-batch consistency and reproducibility- Improved sensitivity and specificity- Long-term security of supply- Animal-free production <p>For more information see here.</p> <p>Our RabMAb[®] technology is a patented hybridoma-based technology for making rabbit monoclonal antibodies. For details on our patents, please refer to RabMAb[®] patents.</p> <p>Mouse, Rat: We have preliminary internal testing data to indicate this antibody may not react with these species. Please contact us for more information.</p>

製品の特性

製品の状態	Liquid
保存方法	Shipped at 4°C. Upon delivery aliquot and store at -20°C. Avoid freeze / thaw cycles.
バッファー	pH: 7.20 Preservative: 0.05% Sodium azide Constituents: 0.1% BSA, 40% Glycerol (glycerin, glycerine), 9.85% Tris glycine, 50% Tissue culture supernatant
精製度	Protein A purified
ポリ/モノ	モノクローナル

クローン名 EPR759Y
 アイソタイプ IgG

アプリケーション

The Abpromise guarantee **Abpromise保証は、** 次のテスト済みアプリケーションにおけるab75809の使用に適用されます
 アプリケーションノートには、推奨の開始希釈率がありますが、適切な希釈率につきましてはご検討ください。

アプリケーション	Abreviews	特記事項
WB		1/1000 - 1/2000. Detects a band of approximately 63 kDa (predicted molecular weight: 63 kDa).
ICC/IF		1/100 - 1/250.
Dot blot		1/1000.

追加情報 Is unsuitable for Flow Cyt, IHC-P or IP.

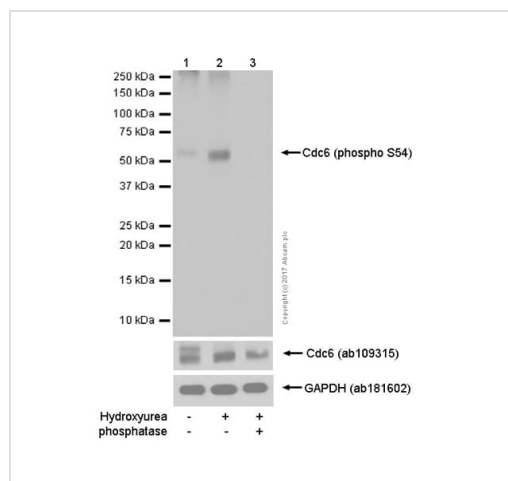
ターゲット情報

機能 Involved in the initiation of DNA replication. Also participates in checkpoint controls that ensure DNA replication is completed before mitosis is initiated.

配列類似性 Belongs to the CDC6/cdc18 family.

細胞内局在 Nucleus. Cytoplasm. The protein is nuclear in G1 and cytoplasmic in S-phase cells.

画像



Western blot - Anti-Cdc6 (phospho S54) antibody [EPR759Y] (ab75809)

All lanes : Anti-Cdc6 (phospho S54) antibody [EPR759Y] (ab75809) at 1/5000 dilution

Lane 1 : HeLa (Human cervix adenocarcinoma epithelial cell) whole cell lysates

Lane 2 : HeLa (Human cervix adenocarcinoma epithelial cell) treated with Hydroxyurea (3mM, 20 h). Whole cell lysates

Lane 3 : HeLa (Human cervix adenocarcinoma epithelial cell) treated with Hydroxyurea (3mM, 20 h). Whole cell lysates. Then the membrane was incubated with phosphatase.

Lysates/proteins at 15 µg per lane.

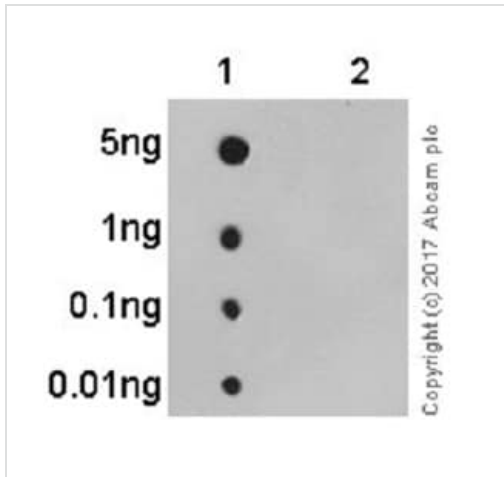
Secondary

All lanes : Goat Anti-Rabbit IgG H&L (HRP) (**ab97051**) at 1/20000 dilution

Predicted band size: 63 kDa

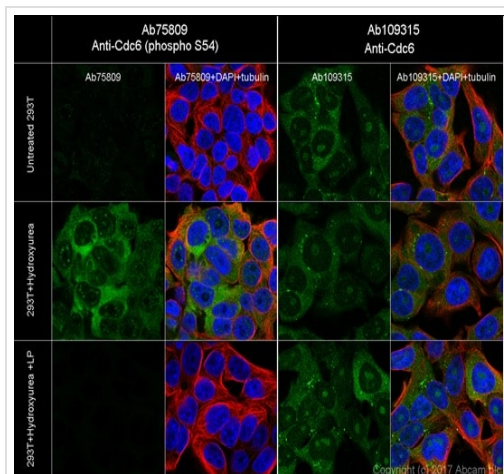
Exposure time: 30 seconds

Blocking buffer and diluting buffer: 5% NFDM/TBST



Dot Blot - Anti-Cdc6 (phospho S54) antibody
[EPR759Y] (ab75809)

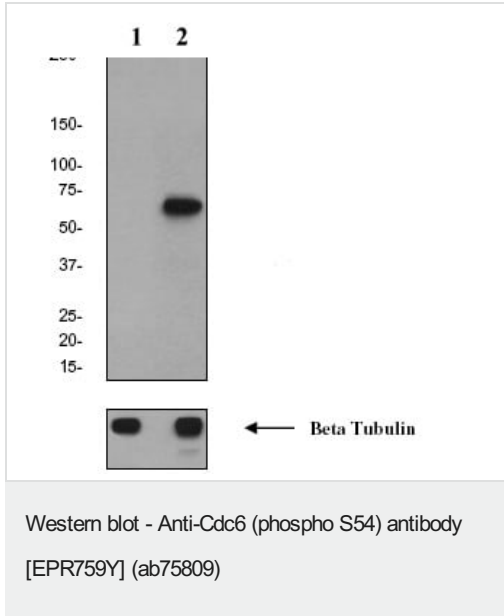
Primary antibody dilution 1:1000 dilution. Secondary antibody used was Goat Anti-Rabbit IgG, (H+L), Peroxidase conjugated ([ab97051](#)). Secondary ab dilution 1:100,000 dilution. Blocking buffer and concentration 5% NFDM/TBST. Diluting buffer and concentration 5% NFDM/TBST. Lane 1:Cdc6 (pS54) phospho peptide, Lane 2:Cdc6 non-phospho peptide. Exposure time 3 minutes



Immunocytochemistry/ Immunofluorescence - Anti-Cdc6 (phospho S54) antibody [EPR759Y] (ab75809)

Cell line 293T (Human embryonic kidney epithelial cell). Target AbID Ab75809 anti- Cdc6 (phospho S54)

[ab150077](#) AlexaFluor®488 Goat anti-Rabbit secondary. Counterstain AbID Ab195889 Anti-alpha Tubulin antibody [DM1A] - Microtubule Marker (Alexa Fluor® 594). Fixative 4% Paraformaldehyde. Permeabilisation 0.1% tritonX-100. Nuclear counter stain DAPI. Datasheet Comments Confocal image showing the expression was increased after treatment with Hydroxyurea (3mM 20hour), the signal was decreased after treatment with the Lambda Protein Phosphatase 31 for 2h. Target 1oAb dilution 1:100 2.4 µg/ml, Target 2ndry Ab dilution 1:1000 2 µg/ml, Counterstain Ab dilution 1:200 2.5 µg/ml



All lanes : Anti-Cdc6 (phospho S54) antibody [EPR759Y] (ab75809) at 1/2000 dilution

Lane 1 : Raji cell lysate

Lane 2 : Raji +
FBS cell lysate

Lysates/proteins at 10 µg per lane.





Secondary

All lanes : HRP labelled goat anti-rabbit at 1/2000 dilution

Predicted band size: 63 kDa

Observed band size: 63 kDa

Why choose a recombinant antibody?

 <p>Research with confidence Consistent and reproducible results</p>	 <p>Long-term and scalable supply Recombinant technology</p>
 <p>Success from the first experiment Confirmed specificity</p>	 <p>Ethical standards compliant Animal-free production</p>

Anti-Cdc6 (phospho S54) antibody [EPR759Y] (ab75809)

Please note: All products are "FOR RESEARCH USE ONLY. NOT FOR USE IN DIAGNOSTIC PROCEDURES"

Our Abpromise to you: Quality guaranteed and expert technical support

- Replacement or refund for products not performing as stated on the datasheet
- Valid for 12 months from date of delivery

- Response to your inquiry within 24 hours
- We provide support in Chinese, English, French, German, Japanese and Spanish
- Extensive multi-media technical resources to help you
- We investigate all quality concerns to ensure our products perform to the highest standards

If the product does not perform as described on this datasheet, we will offer a refund or replacement. For full details of the Abpromise, please visit <https://www.abcam.co.jp/abpromise> or contact our technical team.

Terms and conditions

- Guarantee only valid for products bought direct from Abcam or one of our authorized distributors