


Anti-Cdc6 antibody ab125195

1 References [画像数 2](#)

製品の概要

製品名	Anti-Cdc6 antibody
製品の詳細	Rabbit polyclonal to Cdc6
由来種	Rabbit
アプリケーション	適用あり: IHC-P
種交差性	交差種: Mouse, Human 交差が予測される動物種: Chimpanzee, Gorilla 
免疫原	Synthetic peptide, corresponding to a region within N terminal amino acids 1-50 of Human Cdc6 (NP_001245.1).
ポジティブ・コントロール	Human Breast Carcinoma, Colon Carcinoma, Non-Small Cell Lung Cancer, Ovarian Carcinoma and Prostate Carcinoma tissues; Mouse Colon Carcinoma CT26, Renal Cell Carcinoma and Teratoma tissues.
特記事項	<p>The Life Science industry has been in the grips of a reproducibility crisis for a number of years. Abcam is leading the way in addressing this with our range of recombinant monoclonal antibodies and knockout edited cell lines for gold-standard validation. Please check that this product meets your needs before purchasing.</p> <p>If you have any questions, special requirements or concerns, please send us an inquiry and/or contact our Support team ahead of purchase. Recommended alternatives for this product can be found below, along with publications, customer reviews and Q&As</p>

製品の特性

製品の状態	Liquid
保存方法	Shipped at 4°C. Upon delivery aliquot and store at -20°C. Avoid freeze / thaw cycles.
バッファー	pH: 6.8 Preservative: 0.09% Sodium azide Constituents: 99% Tris buffered saline, 0.1% BSA
精製度	Immunogen affinity purified
特記事項(精製)	ab125195 was affinity purified using an epitope specific to Cdc6 immobilized on a solid support.
ポリ/モノ	ポリクローナル
アイソタイプ	IgG

アプリケーション

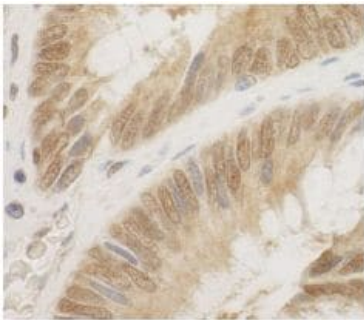
The Abpromise guarantee Abpromise保証は、次のテスト済みアプリケーションにおけるab125195の使用に適用されます
アプリケーションノートには、推奨の開始希釈率がありますが、適切な希釈率につきましてはご検討ください。

アプリケーション	Abreviews	特記事項
IHC-P		1/100 - 1/500. Perform heat mediated antigen retrieval with citrate buffer pH 6 before commencing with IHC staining protocol. Likely to work with frozen sections

ターゲット情報

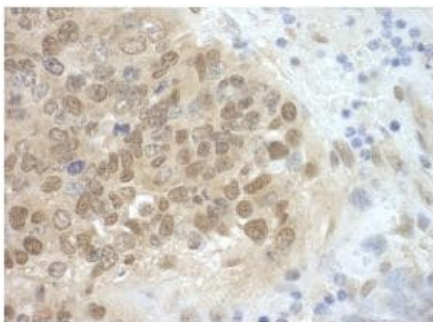
機能	Involved in the initiation of DNA replication. Also participates in checkpoint controls that ensure DNA replication is completed before mitosis is initiated.
配列類似性	Belongs to the CDC6/cdc18 family.
細胞内局在	Nucleus. Cytoplasm. The protein is nuclear in G1 and cytoplasmic in S-phase cells.

画像



ab125195 at 1/100 dilution staining Cdc6 in Formalin-Fixed, Paraffin-Embedded Human colon carcinoma tissue by Immunohistochemistry.
Detection: DAB staining.

Immunohistochemistry (Formalin/PFA-fixed paraffin-embedded sections) - Anti-Cdc6 antibody (ab125195)



ab125195 at 1/100 dilution staining Cdc6 in Formalin-Fixed, Paraffin-Embedded Mouse teratoma tissue by Immunohistochemistry.
Detection: DAB staining.

Immunohistochemistry (Formalin/PFA-fixed paraffin-embedded sections) - Anti-Cdc6 antibody (ab125195)

Please note: All products are "FOR RESEARCH USE ONLY. NOT FOR USE IN DIAGNOSTIC PROCEDURES"

Our Abpromise to you: Quality guaranteed and expert technical support

- Replacement or refund for products not performing as stated on the datasheet
- Valid for 12 months from date of delivery
- Response to your inquiry within 24 hours

- We provide support in Chinese, English, French, German, Japanese and Spanish
- Extensive multi-media technical resources to help you
- We investigate all quality concerns to ensure our products perform to the highest standards

If the product does not perform as described on this datasheet, we will offer a refund or replacement. For full details of the Abpromise, please visit <https://www.abcam.co.jp/abpromise> or contact our technical team.

Terms and conditions

- Guarantee only valid for products bought direct from Abcam or one of our authorized distributors