

Anti-CDC45L antibody [EPR5758] ab108350

リコンビナント RabMAb

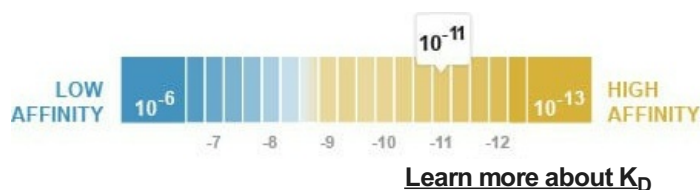
2 References 画像数 4

製品の概要

製品名	Anti-CDC45L antibody [EPR5758]
製品の詳細	Rabbit monoclonal [EPR5758] to CDC45L
由来種	Rabbit
アプリケーション	適用あり: WB, IHC-P 適用なし: IP
種交差性	交差種: Human
免疫原	Synthetic peptide. This information is proprietary to Abcam and/or its suppliers.
ポジティブ・コントロール	HeLa, Jurkat, K562, and 293T cell lysates. Human kidney tissue
特記事項	<p>This product is a recombinant monoclonal antibody, which offers several advantages including:</p> <ul style="list-style-type: none"> - High batch-to-batch consistency and reproducibility - Improved sensitivity and specificity - Long-term security of supply - Animal-free production <p>For more information see here.</p> <p>Our RabMAb[®] technology is a patented hybridoma-based technology for making rabbit monoclonal antibodies. For details on our patents, please refer to RabMAb[®] patents.</p> <p>Mouse, Rat: We have preliminary internal testing data to indicate this antibody may not react with these species. Please contact us for more information.</p>

製品の特性

製品の状態	Liquid
保存方法	Shipped at 4°C. Upon delivery aliquot and store at -20°C. Avoid freeze / thaw cycles.
解離定数 (K _D 値)	K _D = 3.17 x 10 ⁻¹¹ M



バッファー	pH: 7.20 Preservative: 0.05% Sodium azide Constituents: 0.1% BSA, 40% Glycerol (glycerin, glycerine), 9.85% Tris glycine, 50% Tissue culture supernatant
精製度	Tissue culture supernatant
ポリ/モノ	モノクローナル
クローン名	EPR5758
アイソタイプ	IgG

アプリケーション

The Abpromise guarantee **Abpromise保証は、** 次のテスト済みアプリケーションにおけるab108350の使用に適用されます
アプリケーションノートには、推奨の開始希釈率がありますが、適切な希釈率につきましてはご検討ください。

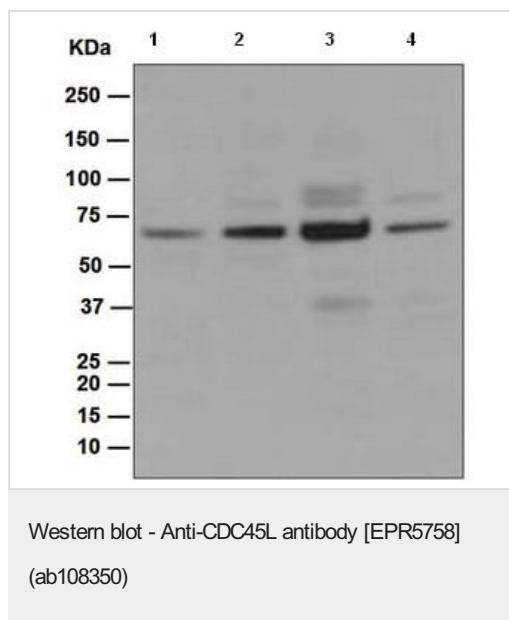
アプリケーション	Abreviews	特記事項
WB		1/10000 - 1/50000. Detects a band of approximately 65 kDa (predicted molecular weight: 66 kDa).
IHC-P		1/50 - 1/100. Perform heat mediated antigen retrieval with citrate buffer pH 6 before commencing with IHC staining protocol. Perform antigen retrieval before commencing with IHC staining protocol

追加情報 Is unsuitable for IP.

ターゲット情報

機能	Required for initiation of chromosomal DNA replication.
組織特異性	Widely expressed, highest levels are found in adult testis and thymus and in fetal liver.
配列類似性	Belongs to the CDC45 family.
発生段階	Transcript peaks at G1-S transition, but total protein remains constant throughout the cell cycle. Expressed in multiple tissues during embryogenesis, including neural crest-derived structures.
細胞内局在	Cytoplasm. Nucleus.

画像



All lanes : Anti-CDC45L antibody [EPR5758] (ab108350) at 1/10000 dilution

Lane 1 : HeLa cell lysate

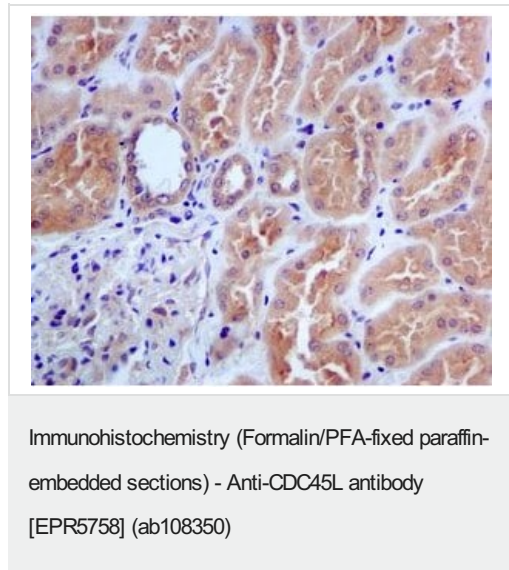
Lane 2 : Jurkat cell lysate

Lane 3 : K562 cell lysate

Lane 4 : 293T (Human embryonic kidney epithelial cell) cell lysate

Lysates/proteins at 10 µg per lane.

Predicted band size: 66 kDa



Immunohistochemical analysis of paraffin-embedded Human kidney tissue using ab108350 at 1/50

Perform heat mediated antigen retrieval with citrate buffer pH 6 before commencing with IHC staining protocol.

OL-RD Scanning - Anti-CDC45L antibody [EPR5758] (ab108350)

Equilibrium disassociation constant (K_D)

Learn more about K_D

[Click here to learn more about \$K_D\$](#)

Why choose a recombinant antibody?



Research with confidence
Consistent and reproducible results



Long-term and scalable supply
Recombinant technology



Success from the first experiment
Confirmed specificity



Ethical standards compliant
Animal-free production

Anti-CDC45L antibody [EPR5758] (ab108350)

Please note: All products are "FOR RESEARCH USE ONLY. NOT FOR USE IN DIAGNOSTIC PROCEDURES"

Our Abpromise to you: Quality guaranteed and expert technical support

- Replacement or refund for products not performing as stated on the datasheet
- Valid for 12 months from date of delivery
- Response to your inquiry within 24 hours
- We provide support in Chinese, English, French, German, Japanese and Spanish
- Extensive multi-media technical resources to help you
- We investigate all quality concerns to ensure our products perform to the highest standards

If the product does not perform as described on this datasheet, we will offer a refund or replacement. For full details of the Abpromise, please visit <https://www.abcam.co.jp/abpromise> or contact our technical team.

Terms and conditions

- Guarantee only valid for products bought direct from Abcam or one of our authorized distributors