


Anti-CDC42 binding protein kinase alpha antibody ab96659

5 References [画像枚数？](#)

医薬用外劇物

製品の概要

製品名	Anti-CDC42 binding protein kinase alpha antibody
製品の詳細	Rabbit polyclonal to CDC42 binding protein kinase alpha
由来種	Rabbit
アプリケーション	適用あり: WB, IHC-P
種交差性	交差種: Human 交差が予測される動物種: Mouse, Rat 
免疫原	Recombinant fragment, corresponding to a region within amino acids 373-574 of Human CDC42 binding protein kinase alpha isoform 3 (NP_055641).
ポジティブ・コントロール	H1299, A549 and HeLa whole cell lysate (ab150035)
特記事項	<p>The Life Science industry has been in the grips of a reproducibility crisis for a number of years. Abcam is leading the way in addressing this with our range of recombinant monoclonal antibodies and knockout edited cell lines for gold-standard validation. Please check that this product meets your needs before purchasing.</p> <p>If you have any questions, special requirements or concerns, please send us an inquiry and/or contact our Support team ahead of purchase. Recommended alternatives for this product can be found below, along with publications, customer reviews and Q&As</p>

製品の特性

製品の状態	Liquid
保存方法	Shipped at 4°C. Upon delivery aliquot and store at -20°C or -80°C. Avoid repeated freeze / thaw cycles.
バッファー	pH: 7.00 Preservative: 0.01% Thimerosal (merthiolate) Constituents: 59.99% PBS, 40% Glycerol (glycerin, glycerine)
精製度	Protein A purified
ポリ/モノ	ポリクローナル
アイソタイプ	IgG

アプリケーション

The Abpromise guarantee

Abpromise保証は、次のテスト済みアプリケーションにおけるab96659の使用に適用されず

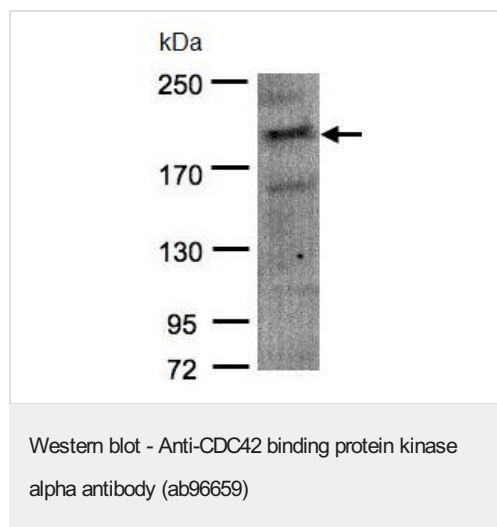
アプリケーションノートには、推奨の開始希釈率がありますが、適切な希釈率につきましてはご検討ください。

アプリケーション	Abreviews	特記事項
WB		1/500 - 1/3000. Predicted molecular weight: 186 kDa.
IHC-P		1/100 - 1/500. Perform heat-mediated antigen retrieval with 10mM Citrate buffer or Tris-EDTA buffer (pH 8.0)

ターゲット情報

機能	May act as a downstream effector of CDC42 in cytoskeletal reorganization. Contributes to the actomyosin contractility required for cell invasion, through the regulation of MYPT1 and thus MLC2 phosphorylation.
組織特異性	Abundant in the heart, brain, skeletal muscle, kidney, and pancreas, with little or no expression in the lung and liver.
配列類似性	Belongs to the protein kinase superfamily. AGC Ser/Thr protein kinase family. DMPK subfamily. Contains 1 AGC-kinase C-terminal domain. Contains 1 CNH domain. Contains 1 CRIB domain. Contains 1 PH domain. Contains 1 phorbol-ester/DAG-type zinc finger. Contains 1 protein kinase domain.
細胞内局在	Cytoplasm. Displays a dispersed punctate distribution and concentrates along the cell periphery, especially at the leading edge and cell-cell junction. This concentration is PH-domain dependent.

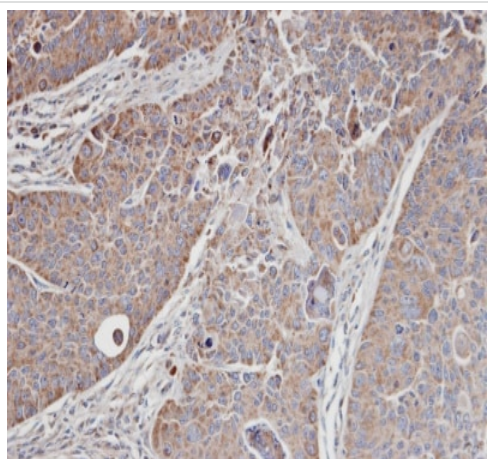
画像



Anti-CDC42 binding protein kinase alpha antibody (ab96659) at 1/1500 dilution + H1299 whole cell lysate at 30 µg

Predicted band size: 186 kDa

7.5% SDS PAGE



ab96659 staining CDC42 binding protein kinase alpha in SW480 xenograft at 1/100 dilution by Immunohistochemistry (Formalin/PFA-Fixed Paraffin-embedded sections)

Immunohistochemistry (Formalin/PFA-fixed paraffin-embedded sections) - Anti-CDC42 binding protein kinase alpha antibody (ab96659)

Please note: All products are "FOR RESEARCH USE ONLY. NOT FOR USE IN DIAGNOSTIC PROCEDURES"

Our Abpromise to you: Quality guaranteed and expert technical support

- Replacement or refund for products not performing as stated on the datasheet
- Valid for 12 months from date of delivery
- Response to your inquiry within 24 hours

- We provide support in Chinese, English, French, German, Japanese and Spanish
- Extensive multi-media technical resources to help you
- We investigate all quality concerns to ensure our products perform to the highest standards

If the product does not perform as described on this datasheet, we will offer a refund or replacement. For full details of the Abpromise, please visit <https://www.abcam.co.jp/abpromise> or contact our technical team.

Terms and conditions

- Guarantee only valid for products bought direct from Abcam or one of our authorized distributors