

### Anti-Cdc37 (phospho S13) antibody [EPR4879] ab108360

リコンビナント RabMAb

★★★★★ **3 Abreviews** **6 References** **画像数 4**

#### 製品の概要

製品名	Anti-Cdc37 (phospho S13) antibody [EPR4879]
製品の詳細	Rabbit monoclonal [EPR4879] to Cdc37 (phospho S13)
由来種	Rabbit
特異性	The mouse and rat recommendation is based on the WB results. We do not guarantee IHC-P for mouse and rat.
アプリケーション	<b>適用あり:</b> WB, Dot blot
種交差性	<b>交差種:</b> Mouse, Rat, Human
免疫原	Synthetic peptide. This information is proprietary to Abcam and/or its suppliers.
ポジティブ・コントロール	WB: HeLa cell, Mouse brain tissue, and Rat brain tissue lysates. Dot: Cdc37 (pS13) phospho peptide.
特記事項	<p>This product is a recombinant monoclonal antibody, which offers several advantages including:</p> <ul style="list-style-type: none"><li>- High batch-to-batch consistency and reproducibility</li><li>- Improved sensitivity and specificity</li><li>- Long-term security of supply</li><li>- Animal-free production</li></ul> <p>For more information <a href="#">see here</a>.</p> <p>Our RabMAb<sup>®</sup> technology is a patented hybridoma-based technology for making rabbit monoclonal antibodies. For details on our patents, please refer to <a href="#">RabMAb<sup>®</sup> patents</a>.</p>

#### 製品の特性

製品の状態	Liquid
保存方法	Shipped at 4°C. Store at +4°C short term (1-2 weeks). Upon delivery aliquot. Store at -20°C long term. Avoid freeze / thaw cycle.
バッファー	pH: 7.20 Preservative: 0.01% Sodium azide Constituents: 59% PBS, 40% Glycerol (glycerin, glycerine), 0.05% BSA
精製度	Protein A purified
ポリ/モノ	モノクローナル

クローン名 EPR4879  
アイソタイプ IgG

## アプリケーション

**The Abpromise guarantee** **Abpromise保証は、** 次のテスト済みアプリケーションにおけるab108360の使用に適用されます  
アプリケーションノートには、推奨の開始希釈率がありますが、適切な希釈率につきましてはご検討ください。

アプリケーション	Abreviews	特記事項
WB	★★★★★ (3)	1/1000 - 1/10000. Predicted molecular weight: 44 kDa.
Dot blot		1/1000.

## ターゲット情報

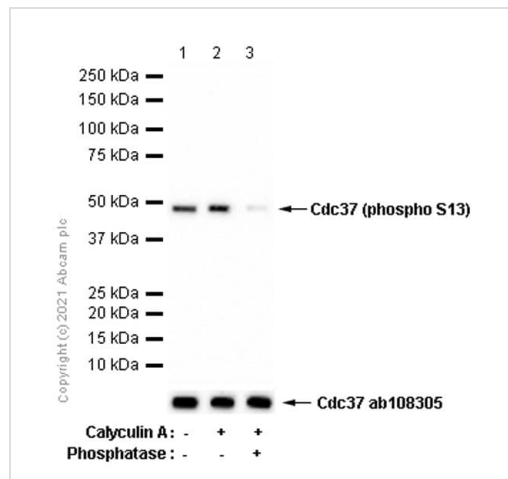
**機能** Co-chaperone that binds to numerous kinases and promotes their interaction with the Hsp90 complex, resulting in stabilization and promotion of their activity.

**配列類似性** Belongs to the CDC37 family.

**翻訳後修飾** Constitutively sumoylated by UBE2I.

**細胞内局在** Cytoplasm.

## 画像



Western blot - Anti-Cdc37 (phospho S13) antibody [EPR4879] (ab108360)

**All lanes** : Anti-Cdc37 (phospho S13) antibody [EPR4879] (ab108360) at 1/10000 dilution (Purified)

**Lane 1** : HeLa (Human cervix adenocarcinoma epithelial cell) whole cell lysate

**Lane 2** : HeLa (Human cervix adenocarcinoma epithelial cell) treated with 50nM Calyculin A for 3 hours whole cell lysate

**Lane 3** : HeLa (Human cervix adenocarcinoma epithelial cell) treated with 50nM Calyculin A for 3 hours, then the membrane treated with Phosphatase

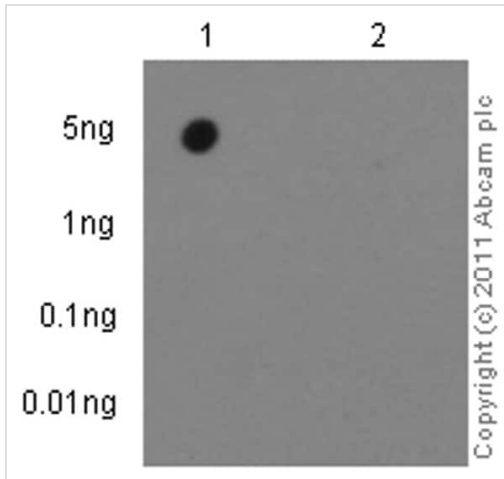
Lysates/proteins at 15 µg per lane.

### Secondary

**All lanes** : Goat Anti-Rabbit IgG H&L (HRP) ([ab97051](#)) at 1/20000 dilution

**Predicted band size:** 44 kDa

**Observed band size:** 44 kDa

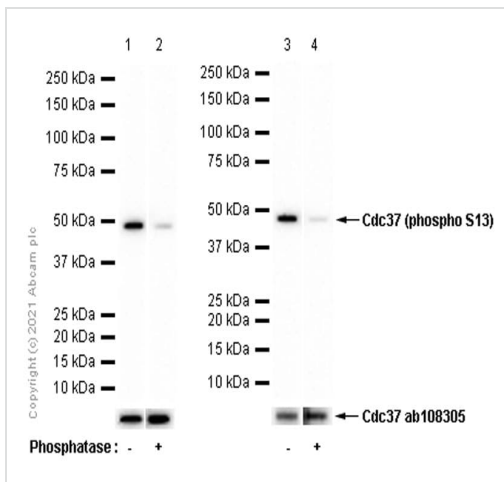


Dot Blot - Anti-Cdc37 (phospho S13) antibody  
[EPR4879] (ab108360)

Dot blot analysis of Cdc37 (pS13) phospho peptide (lane 1) and Cdc37 non-phospho peptide (lane 2) labelling Cdc37 (phospho S13) with ab108360 at a dilution of 1/1000. A peroxidase-conjugated goat anti-rabbit IgG (H+L) was used as the secondary antibody (1/2500).

Blocking and dilution buffer: 5% NFDm/TBST.

Exposure time: 3 minutes.



Western blot - Anti-Cdc37 (phospho S13) antibody  
[EPR4879] (ab108360)

**All lanes** : Anti-Cdc37 (phospho S13) antibody [EPR4879]  
(ab108360) at 1/10000 dilution (Purified)

**Lane 1** : Mouse brain lysate

**Lane 2** : Mouse brain lysate, then the membrane treated with Phosphatase

**Lane 3** : Rat brain lysate

**Lane 4** : Rat brain lysate, then the membrane treated with Phosphatase

Lysates/proteins at 15 µg per lane.

**Secondary**

**All lanes** : Goat Anti-Rabbit IgG H&L (HRP) (**ab97051**) at 1/20000 dilution

**Predicted band size:** 44 kDa

**Observed band size:** 44 kDa

### Why choose a recombinant antibody?



**Research with confidence**  
Consistent and reproducible results



**Long-term and scalable supply**  
Recombinant technology



**Success from the first experiment**  
Confirmed specificity



**Ethical standards compliant**  
Animal-free production

Anti-Cdc37 (phospho S13) antibody [EPR4879]  
(ab108360)

**Please note:** All products are "FOR RESEARCH USE ONLY. NOT FOR USE IN DIAGNOSTIC PROCEDURES"

### Our Abpromise to you: Quality guaranteed and expert technical support

---

- Replacement or refund for products not performing as stated on the datasheet
- Valid for 12 months from date of delivery
- Response to your inquiry within 24 hours
- We provide support in Chinese, English, French, German, Japanese and Spanish
- Extensive multi-media technical resources to help you
- We investigate all quality concerns to ensure our products perform to the highest standards

If the product does not perform as described on this datasheet, we will offer a refund or replacement. For full details of the Abpromise, please visit <https://www.abcam.co.jp/abpromise> or contact our technical team.

### Terms and conditions

---

- Guarantee only valid for products bought direct from Abcam or one of our authorized distributors