

1 References 画像数 1

製品名	Anti-CD8 beta antibody [H35-17.2]
製品の詳細	Rat monoclonal [H35-17.2] to CD8 beta
由来種	Rat
アプリケーション	適用あり: Flow Cyt
種交差性	交差種: Mouse
免疫原	Tissue, cells or virus corresponding to Mouse CD8 beta. 5-day mixed leukocyte culture population, C57BL/6 anti-BALB/c
ポジティブ・コントロール	BALB/c splenocytes; Mouse splenocytes and thymocytes
特記事項	<p>The Life Science industry has been in the grips of a reproducibility crisis for a number of years. Abcam is leading the way in addressing this with our range of recombinant monoclonal antibodies and knockout edited cell lines for gold-standard validation. Please check that this product meets your needs before purchasing.</p> <p>If you have any questions, special requirements or concerns, please send us an inquiry and/or contact our Support team ahead of purchase. Recommended alternatives for this product can be found below, along with publications, customer reviews and Q&As</p>

製品の状態	Liquid
保存方法	Shipped at 4°C. Store at +4°C short term (1-2 weeks). Store at -20°C or -80°C. Avoid freeze / thaw cycle.
バッファー	pH: 7.20 Preservative: 0.09% Sodium azide
精製度	Protein G purified
ポリ/モノ	モノクローナル
クローン名	H35-17.2
アイソタイプ	IgG2b
軽鎖の種類	kappa

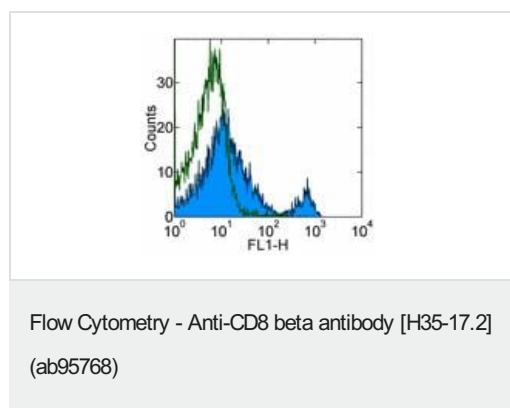
The Abpromise guarantee Abpromise保証は、 次のテスト済みアプリケーションにおけるab95768の使用に適用されます
アプリケーションノートには、推奨の開始希釈率がありますが、適切な希釈率につきましてはご検討ください。

アプリケーション	Abreviews	特記事項
Flow Cyt		Use 0.25-0.5µg for 10 ⁵⁻⁸ cells. Staining the cell sample in a final volume of 100 µl is recommended.

ターゲット情報

機能	Identifies cytotoxic/suppressor T-cells that interact with MHC class I bearing targets. CD8 is thought to play a role in the process of T-cell mediated killing.
組織特異性	Isoform 1, isoform 3, isoform 5, isoform 6, isoform 7 and isoform 8 are expressed in both thymus and peripheral CD8+ T-cells. Expression of isoform 1 is higher in thymus CD8+ T-cells than in peripheral CD8+ T-cells. Expression of isoform 6 is higher in peripheral CD8+ T-cells than in thymus CD8+ T-cells.
配列類似性	Contains 1 Ig-like V-type (immunoglobulin-like) domain.
翻訳後修飾	Phosphorylated as a consequence of T-cell activation.
細胞内局在	Secreted and Cell membrane.

画像



Flow cytometry staining of BALB/c splenocytes with 0.25 µg of Rat IgG2b Isotype Control (open histogram) or 0.25 µg of ab95768 (filled histogram) followed by Anti-Rat IgG FITC. Cells in the lymphocyte gate were used for analysis.

Please note: All products are "FOR RESEARCH USE ONLY. NOT FOR USE IN DIAGNOSTIC PROCEDURES"

Our Abpromise to you: Quality guaranteed and expert technical support

- Replacement or refund for products not performing as stated on the datasheet
- Valid for 12 months from date of delivery

- Response to your inquiry within 24 hours
- We provide support in Chinese, English, French, German, Japanese and Spanish
- Extensive multi-media technical resources to help you
- We investigate all quality concerns to ensure our products perform to the highest standards

If the product does not perform as described on this datasheet, we will offer a refund or replacement. For full details of the Abpromise, please visit <https://www.abcam.co.jp/abpromise> or contact our technical team.

Terms and conditions

- Guarantee only valid for products bought direct from Abcam or one of our authorized distributors