


# Anti-CD8 alpha antibody ab85792

**13 References**    **画像数 2**

### 製品の概要

|              |   |
|--------------|---|
| 製品名          | Anti-CD8 alpha antibody   |
| 製品の詳細        | Rabbit polyclonal to CD8 alpha  |
| 由来種          | Rabbit  |
| アプリケーション     | <b>適用あり:</b> WB, IHC-P  |
| 種交差性         | <b>交差種:</b> Human<br><b>交差が予測される動物種:</b> Orangutan   |
| 免疫原          | Synthetic peptide corresponding to Human CD8 alpha aa 1-100 conjugated to keyhole limpet haemocyanin.<br>Database link: <b><u>P01732</u></b><br>(Peptide available as <b><u>ab101388</u></b> )  |
| ポジティブ・コントロール | This antibody gave a positive signal in the following lysates: Human Thymus Lysate; Human Spleen Tissue; Human Tonsil Tissue; THP1 Whole Cell.  |
| 特記事項         | <p>The Life Science industry has been in the grips of a reproducibility crisis for a number of years. Abcam is leading the way in addressing this with our range of recombinant monoclonal antibodies and knockout edited cell lines for gold-standard validation. Please check that this product meets your needs before purchasing.</p> <p>If you have any questions, special requirements or concerns, please send us an inquiry and/or contact our Support team ahead of purchase. Recommended alternatives for this product can be found below, along with publications, customer reviews and Q&amp;As</p> |

### 製品の特性

|       |  |
|-------|--|
| 製品の状態 | Liquid   |
| 保存方法  | Shipped at 4°C. Store at +4°C short term (1-2 weeks). Upon delivery aliquot. Store at -20°C or -80°C. Avoid freeze / thaw cycle.   |
| バッファー | pH: 7.40<br>Preservative: 0.02% Sodium azide<br>Constituent: PBS<br><br>Batches of this product that have a concentration < 1mg/ml may have BSA added as a stabilising agent. If you would like information about the formulation of a specific lot, please contact our scientific support team who will be happy to help. |

|        |                             |
|--------|-----------------------------|
| 精製度    | Immunogen affinity purified |
| ポリ/モノ  | ポリクローナル                     |
| アイソタイプ | IgG                         |

## アプリケーション

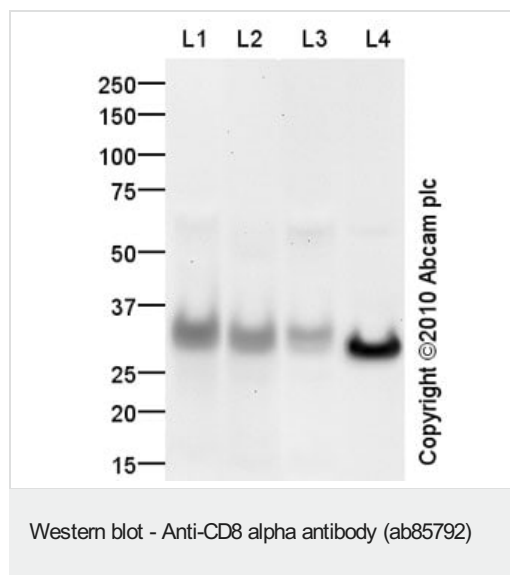
**The Abpromise guarantee**      **Abpromise保証は、**次のテスト済みアプリケーションにおけるab85792の使用に適用されます  
アプリケーションノートには、推奨の開始希釈率がありますが、適切な希釈率につきましてはご検討ください。

| アプリケーション | Abreviews | 特記事項  |
|----------|-----------|---|
| WB       |           | Use a concentration of 1 mg/ml. Detects a band of approximately 30 kDa (predicted molecular weight: 25 kDa).          |
| IHC-P    |           | Use a concentration of 5 µg/ml. Perform heat mediated antigen retrieval before commencing with IHC staining protocol. |

## ターゲット情報

|       |  |
|-------|--|
| 機能    | Identifies cytotoxic/suppressor T-cells that interact with MHC class I bearing targets. CD8 is thought to play a role in the process of T-cell mediated killing. CD8 alpha chains binds to class I MHC molecules alpha-3 domains.                  |
| 関連疾患  | Defects in CD8A are a cause of familial CD8 deficiency (CD8 deficiency) [MIM:608957]. Familial CD8 deficiency is a novel autosomal recessive immunologic defect characterized by absence of CD8+ cells, leading to recurrent bacterial infections. |
| 配列類似性 | Contains 1 Ig-like V-type (immunoglobulin-like) domain.  |
| 翻訳後修飾 | All of the five most carboxyl-terminal cysteines form inter-chain disulfide bonds in dimers and higher multimers, while the four N-terminal cysteines do not.  |
| 細胞内局在 | Secreted and Cell membrane.  |

## 画像



**All lanes :** Anti-CD8 alpha antibody (ab85792) at 1 µg/ml

**Lane 1 :** Human thymus tissue lysate - total protein ([ab30146](#))

**Lane 2 :** Human spleen tissue lysate - total protein ([ab29699](#))

**Lane 3 :** Human tonsil normal tissue lysate - total protein ([ab29615](#))

**Lane 4 :** THP1 (Human acute monocytic leukemia cell line) Whole Cell Lysate

Lysates/proteins at 10 µg per lane.

### Secondary

**All lanes :** Goat polyclonal Secondary Antibody to Rabbit IgG - H&L (HRP), pre-adsorbed at 1/5000 dilution

Developed using the ECL technique.

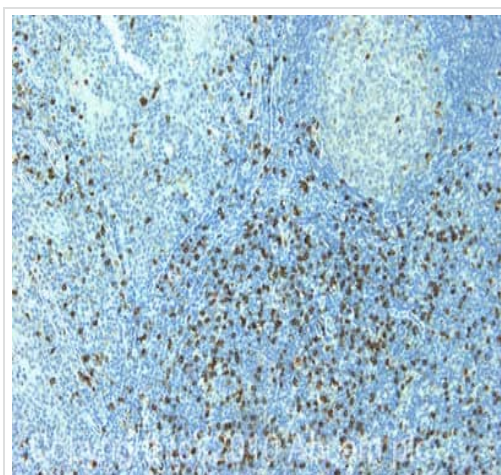
Performed under reducing conditions.

**Predicted band size:** 25 kDa

**Observed band size:** 30 kDa

**Exposure time:** 4 minutes

CD8 alpha is a glycoprotein which may account for the observed bands running at a higher molecular weight than predicted. Abcam welcomes customer feedback.



Immunohistochemistry (Formalin/PFA-fixed paraffin-embedded sections) - Anti-CD8 alpha antibody (ab85792)

IHC image of CD8 alpha staining in human tonsil formalin fixed paraffin embedded tissue section, performed on a Leica Bond™ system using the standard protocol F. The section was pre-treated using heat mediated antigen retrieval with sodium citrate buffer (pH6, epitope retrieval solution 1) for 20 mins. The section was then incubated with ab85792, 5µg/ml, for 15 mins at room temperature and detected using an HRP conjugated compact polymer system. DAB was used as the chromogen. The section was then counterstained with haematoxylin and mounted with DPX.

**Please note:** All products are "FOR RESEARCH USE ONLY. NOT FOR USE IN DIAGNOSTIC PROCEDURES"

### **Our Abpromise to you: Quality guaranteed and expert technical support**

---

- Replacement or refund for products not performing as stated on the datasheet
- Valid for 12 months from date of delivery
- Response to your inquiry within 24 hours
  
- We provide support in Chinese, English, French, German, Japanese and Spanish
- Extensive multi-media technical resources to help you
- We investigate all quality concerns to ensure our products perform to the highest standards

If the product does not perform as described on this datasheet, we will offer a refund or replacement. For full details of the Abpromise, please visit <https://www.abcam.co.jp/abpromise> or contact our technical team.

### **Terms and conditions**

---

- Guarantee only valid for products bought direct from Abcam or one of our authorized distributors