

# Anti-CD69 antibody ab175391

[1 References](#) [画像数 1](#)

### 製品の概要

---

製品名	Anti-CD69 antibody
製品の詳細	Rabbit polyclonal to CD69
由来種	Rabbit
アプリケーション	<b>適用あり:</b> WB
種交差性	<b>交差種:</b> Mouse, Human
免疫原	Recombinant full length protein corresponding to Human CD69 aa 1-199. Sequence: MSSENCFVAENSSLHPESGQENDATSPHFSTRHEGSFQVPVL CAVMNVVF ITILIIALIALSVGQYNCPGQYTFSMPSDSHVSSCEDWVG QRKCYFIS TVKRSWTSQAACSEHGATLAVIDSEKDMNFLKRYAGREEHW VGLKKEPG HPWKWSNGKEFNWVNTGSDKCVFLKNTEVSSMECEKNLYW ICNKPYK

Database link: [Q07108](#)

 [Run BLAST with](#)

 [Run BLAST with](#)

### 特記事項

The Life Science industry has been in the grips of a reproducibility crisis for a number of years. Abcam is leading the way in addressing this with our range of recombinant monoclonal antibodies and knockout edited cell lines for gold-standard validation. Please check that this product meets your needs before purchasing.

If you have any questions, special requirements or concerns, please send us an inquiry and/or contact our Support team ahead of purchase. Recommended alternatives for this product can be found below, along with publications, customer reviews and Q&As

### 製品の特性

---

製品の状態	Liquid
保存方法	Shipped at 4°C. Store at +4°C short term (1-2 weeks). Upon delivery aliquot. Store at -20°C long term. Avoid freeze / thaw cycle.
バッファー	pH: 7.30

	Preservative: 0.02% Sodium azide Constituents: 49% PBS, 50% Glycerol
精製度	Protein A purified
ポリ/モノ	ポリクローナル
アイソタイプ	IgG

## アプリケーション

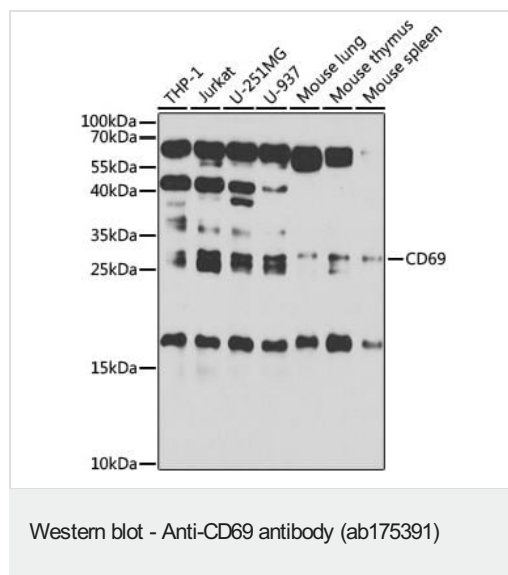
**The Abpromise guarantee** Abpromise保証は、次のテスト済みアプリケーションにおけるab175391の使用に適用されず  
アプリケーションノートには、推奨の開始希釈率がありますが、適切な希釈率につきましてはご確認ください。

アプリケーション	Abreviews	特記事項
WB		1/500 - 1/2000. Predicted molecular weight: 23 kDa.

## ターゲット情報

機能	Involved in lymphocyte proliferation and functions as a signal transmitting receptor in lymphocytes, natural killer (NK) cells, and platelets.
組織特異性	Expressed on the surface of activated T-cells, B-cells, natural killer cells, neutrophils, eosinophils, epidermal Langerhans cells and platelets.
配列類似性	Contains 1 C-type lectin domain.
発生段階	Earliest inducible cell surface glycoprotein acquired during lymphoid activation.
翻訳後修飾	Constitutive Ser/Thr phosphorylation in both mature thymocytes and activated T-lymphocytes.
細胞内局在	Membrane.

## 画像



**All lanes** : Anti-CD69 antibody (ab175391) at 1/1000 dilution

**Lane 1** : THP-1 cell lysate

**Lane 2** : Jurkat cell lysate

**Lane 3** : U-251MG cell lysate

**Lane 4** : U-937 cell lysate

**Lane 5** : Mouse lung tissue lysate

**Lane 6** : Mouse thymus tissue lysate

**Lane 7** : Mouse spleen tissue lysate

Lysates/proteins at 25 µg per lane.

### Secondary

**All lanes** : HRP Goat AntiRabbit IgG (H+L) at 1/10000 dilution

Developed using the ECL technique.

**Predicted band size:** 23 kDa

**Exposure time:** 30 seconds

Blocking buffer: 3% nonfat dry milk in TBST.

**Please note:** All products are "FOR RESEARCH USE ONLY. NOT FOR USE IN DIAGNOSTIC PROCEDURES"

### **Our Abpromise to you: Quality guaranteed and expert technical support**

---

- Replacement or refund for products not performing as stated on the datasheet
- Valid for 12 months from date of delivery
- Response to your inquiry within 24 hours
- We provide support in Chinese, English, French, German, Japanese and Spanish
- Extensive multi-media technical resources to help you
- We investigate all quality concerns to ensure our products perform to the highest standards

If the product does not perform as described on this datasheet, we will offer a refund or replacement. For full details of the Abpromise, please visit <https://www.abcam.co.jp/abpromise> or contact our technical team.

### **Terms and conditions**

---

- Guarantee only valid for products bought direct from Abcam or one of our authorized distributors