

Anti-CD68 antibody [PG-M1] ab783

★★★★★ [2 Abreviews](#) [15 References](#) [画像数 2](#)

製品の概要

製品名	Anti-CD68 antibody [PG-M1]
製品の詳細	Mouse monoclonal [PG-M1] to CD68
由来種	Mouse
アプリケーション	適用あり: IHC-P 適用なし: ICC or IHC-Fr
種交差性	交差種: Human
免疫原	Tissue, cells or virus corresponding to CD68. Gaucher cells
ポジティブ・コントロール	IHC-P: Human tonsil and granulomatous inflammatory tissues.
特記事項	<p>The Life Science industry has been in the grips of a reproducibility crisis for a number of years. Abcam is leading the way in addressing this with our range of recombinant monoclonal antibodies and knockout edited cell lines for gold-standard validation. Please check that this product meets your needs before purchasing.</p> <p>If you have any questions, special requirements or concerns, please send us an inquiry and/or contact our Support team ahead of purchase. Recommended alternatives for this product can be found below, along with publications, customer reviews and Q&As</p>

製品の特性

製品の状態	Liquid
保存方法	Shipped at 4°C. Store at +4°C short term (1-2 weeks). Store at -20°C or -80°C. Avoid freeze / thaw cycle.
バッファー	pH: 7.3 Preservative: 0.05% Sodium azide Constituents: 98.95% Tissue culture supernatant, 1% BSA
精製度	Tissue culture supernatant
ポリ/モノ	モノクローナル
クローン名	PG-M1
アイソタイプ	IgG3
軽鎖の種類	kappa

アプリケーション

The Abpromise guarantee Abpromise保証は、 次のテスト済みアプリケーションにおけるab783の使用に適用されます
アプリケーションノートには、推奨の開始希釈率がありますが、適切な希釈率につきましてはご検討ください。

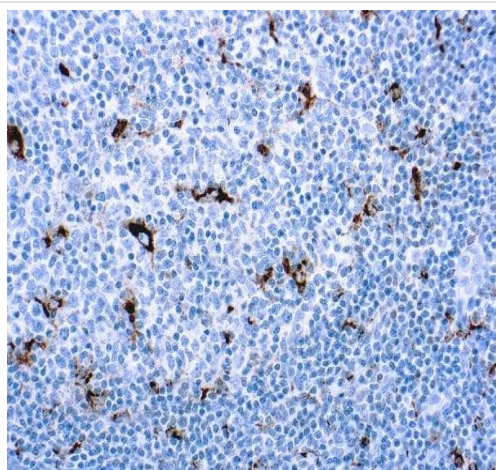
アプリケーション	Abreviews	特記事項
IHC-P	★★★★★ (2)	1/10 - 1/40. Perform enzymatic antigen retrieval before commencing with IHC staining protocol. (use ABC method). We suggest an incubation period of 30-60 minutes at room temperature.

追加情報 Is unsuitable for ICC or IHC-Fr.

ターゲット情報

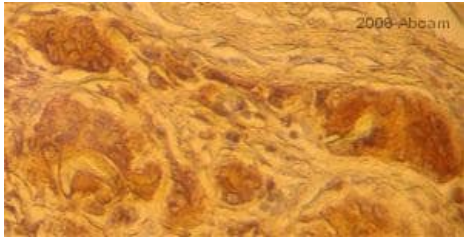
機能	Could play a role in phagocytic activities of tissue macrophages, both in intracellular lysosomal metabolism and extracellular cell-cell and cell-pathogen interactions. Binds to tissue- and organ-specific lectins or selectins, allowing homing of macrophage subsets to particular sites. Rapid recirculation of CD68 from endosomes and lysosomes to the plasma membrane may allow macrophages to crawl over selectin-bearing substrates or other cells.
組織特異性	Highly expressed by blood monocytes and tissue macrophages. Also expressed in lymphocytes, fibroblasts and endothelial cells. Expressed in many tumor cell lines which could allow them to attach to selectins on vascular endothelium, facilitating their dissemination to secondary sites.
配列類似性	Belongs to the LAMP family.
翻訳後修飾	N- and O-glycosylated.
細胞内局在	Cell membrane and Endosome membrane. Lysosome membrane.

画像



ab783 staining CD68 in Human tonsil tissue sections by Immunohistochemistry (IHC-P - paraformaldehyde-fixed, paraffin-embedded sections).

Immunohistochemistry (Formalin/PFA-fixed paraffin-embedded sections) - Anti-CD68 antibody [PG-M1] (ab783)



Immunohistochemistry (Formalin/PFA-fixed paraffin-embedded sections) - Anti-CD68 antibody [PG-M1] (ab783)

This image is courtesy of an anonymous Abreview.

Paraformaldehyde-fixed, paraffin-embedded human granulomatous inflammatory tissue stained for CD68 using ab783 in immunohistochemical analysis.

Please note: All products are "FOR RESEARCH USE ONLY. NOT FOR USE IN DIAGNOSTIC PROCEDURES"

Our Abpromise to you: Quality guaranteed and expert technical support

- Replacement or refund for products not performing as stated on the datasheet
- Valid for 12 months from date of delivery
- Response to your inquiry within 24 hours
- We provide support in Chinese, English, French, German, Japanese and Spanish
- Extensive multi-media technical resources to help you
- We investigate all quality concerns to ensure our products perform to the highest standards

If the product does not perform as described on this datasheet, we will offer a refund or replacement. For full details of the Abpromise, please visit <https://www.abcam.co.jp/abpromise> or contact our technical team.

Terms and conditions

- Guarantee only valid for products bought direct from Abcam or one of our authorized distributors