


Anti-CD68 antibody [KP1] ab955

リコンビナント

★★★★☆ **47 Abreviews** **527 References** [画像数 7](#)

製品の概要

製品名	Anti-CD68 antibody [KP1]
製品の詳細	Mouse monoclonal [KP1] to CD68
由来種	Mouse
アプリケーション	適用あり: ICC/IF, WB, IHC-P, Mass Cytometry
種交差性	交差種: Human 交差が予測される動物種: Mouse, Rat, Rabbit 
免疫原	Tissue, cells or virus. This information is proprietary to Abcam and/or its suppliers.
ポジティブ・コントロール	IHC-P: human tonsil and liver tissues; ICC/IF: THP-1 cells; WB: Human spleen lysate, THP-1 whole cell lysate IMC: Human tonsil tissue
特記事項	Anti CD68 antibody (ab955) is recommended for IHC on human samples but is not recommended for mouse & rat samples. This product has switched from a hybridoma to recombinant production method on 21st September 2020. The concentration listed relates to the purified version, please contact Scientific Support for unpurified concentration. This product is a recombinant monoclonal antibody, which offers several advantages including: - High batch-to-batch consistency and reproducibility - Improved sensitivity and specificity - Long-term security of supply - Animal-free production For more information see here .

製品の特性

製品の状態	Liquid
保存方法	Shipped at 4°C. Store at +4°C short term (1-2 weeks). Upon delivery aliquot. Store at -20°C or -80°C. Avoid freeze / thaw cycle.
バッファー	Preservative: 0.01% Sodium azide Constituents: 59% PBS, 40% Glycerol (glycerin, glycerine), 0.05% BSA
精製度	Protein A purified

ポリ/モノ	モノクローナル
クローン名	KP1
ミエローマ	unknown
アイソタイプ	IgG1
軽鎖の種類	kappa

アプリケーション

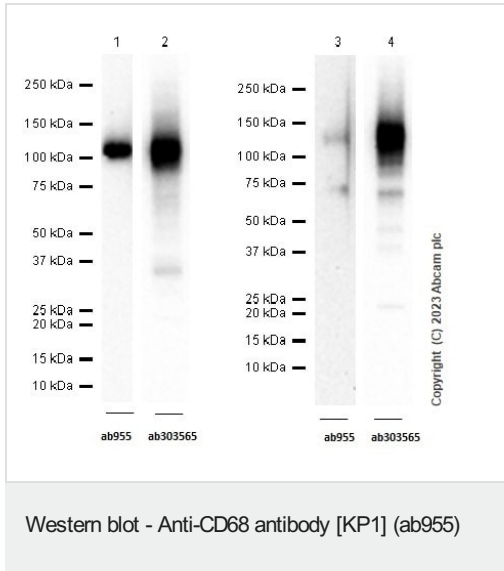
The Abpromise guarantee **Abpromise保証は、次のテスト済みアプリケーションにおけるab955の使用に適用されます**
 アプリケーションノートには、推奨の開始希釈率がありますが、適切な希釈率につきましてはご検討ください。

アプリケーション	Abreviews	特記事項
ICC/IF	★★★★★ (5)	1/50.
WB	★★★★☆ (1)	1/1000. Predicted molecular weight: 37 kDa.
IHC-P	★★★★★ (30)	1/3000. Perform heat mediated antigen retrieval before commencing with IHC staining protocol.
Mass Cytometry		Use at an assay dependent concentration.

ターゲット情報

機能	Could play a role in phagocytic activities of tissue macrophages, both in intracellular lysosomal metabolism and extracellular cell-cell and cell-pathogen interactions. Binds to tissue- and organ-specific lectins or selectins, allowing homing of macrophage subsets to particular sites. Rapid recirculation of CD68 from endosomes and lysosomes to the plasma membrane may allow macrophages to crawl over selectin-bearing substrates or other cells.
組織特異性	Highly expressed by blood monocytes and tissue macrophages. Also expressed in lymphocytes, fibroblasts and endothelial cells. Expressed in many tumor cell lines which could allow them to attach to selectins on vascular endothelium, facilitating their dissemination to secondary sites.
配列類似性	Belongs to the LAMP family.
翻訳後修飾	N- and O-glycosylated.
細胞内局在	Cell membrane and Endosome membrane. Lysosome membrane.

画像



Lanes 1 & 3 : Anti-CD68 antibody [KP1] (ab955) at 1/1000 dilution

Lanes 2 & 4 : Anti-CD68 antibody [RM1031] (**ab303565**) at 1/1000 dilution

Lanes 1-2 : Human spleen tissue lysate

Lanes 3-4 : THP-1 (Human monocytic leukemia monocyte) whole cell lysate

Lysates/proteins at 20 µg per lane.

Secondary

All lanes : Goat Anti-Rabbit IgG (HRP) with minimal cross-reactivity with human IgG at 1/2000 dilution

Predicted band size: 37 kDa

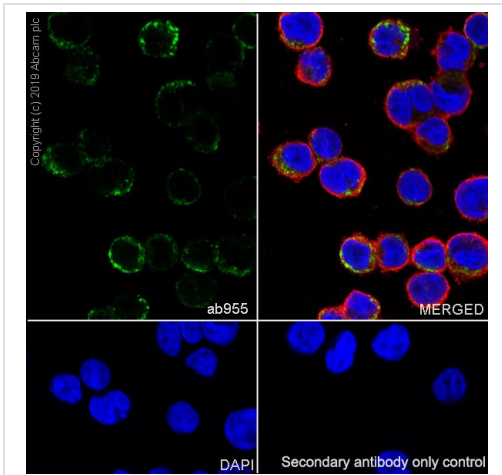
Observed band size: 110 kDa

Blocking and diluting buffer and concentration: 5% NFDM /TBST

Exposure time: Lane1: 60 seconds; Lane2: 5 seconds; Lane3: 180 seconds; Lane4: 7 seconds

ab303565 works better than ab955 in western blot testing.

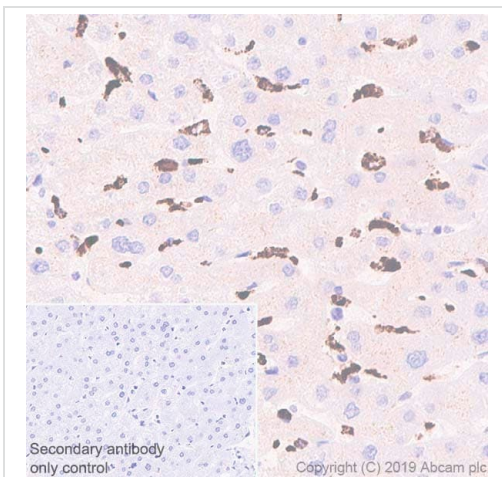
We suggest optimizing experimental protocols (increasing lysate amount, using lower dilution or higher sensitivity ECL substrate) to improve results when using ab955 in western blot.



Immunocytochemistry/ Immunofluorescence - Anti-CD68 antibody [KP1] (ab955)

Immunocytochemistry analysis of THP-1 (human monocytic leukemia monocyte) labelling CD68 with ab955 at 1/50 dilution. Cells were fixed with 100% methanol. Goat Anti-mouse IgG H&L (Alexa Fluor® 488) (**ab150113**) at 1/1000 was used as the secondary antibody (green). Cells were counterstained with Anti-Tubulin antibody (rabbit mAb), **ab179504** - AlexaFluor®594 Goat anti- Rabbit secondary, **ab150080** at 1/500 dilution (red). Nuclear DNA was labelled with DAPI (blue).

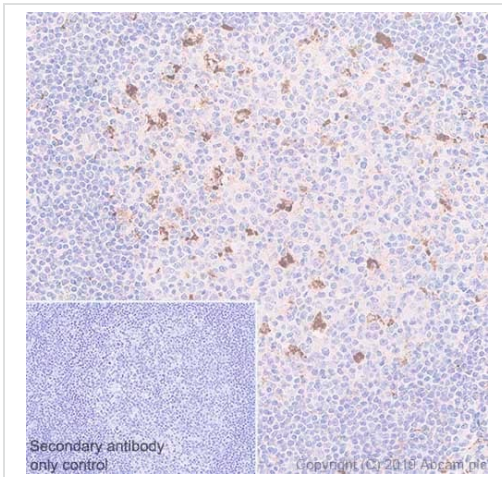
Confocal image showing cytoplasmic staining in THP-1 cells



Immunohistochemistry (Formalin/PFA-fixed paraffin-embedded sections) - Anti-CD68 antibody [KP1] (ab955)

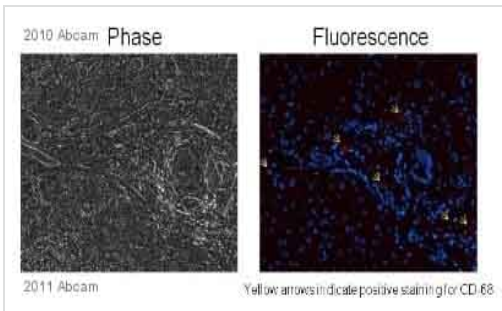
Immunohistochemistry (Formalin/PFA-fixed paraffin-embedded sections) analysis of Human liver tissue labelling CD68 with ab955 at 1/3000 dilution. Heat mediated antigen retrieval was performed using Tris/EDTA buffer pH 9. **ab93684** a Goat Anti-mouse IgG H&L (HRP) was used as the secondary antibody. Negative control using PBS instead of primary antibody. Counterstained with hematoxylin.

Cytoplasmic staining on Kupffer cells of human liver (PMID: 12118106).



Immunohistochemistry (Formalin/PFA-fixed paraffin-embedded sections) - Anti-CD68 antibody [KP1] (ab955)

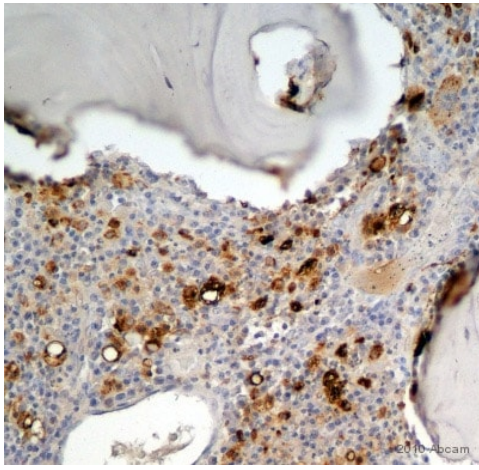
Immunohistochemistry (Formalin/PFA-fixed paraffin-embedded sections) analysis of Human tonsil tissue labelling CD68 with ab955 at 1/3000 dilution. Heat mediated antigen retrieval was performed using Tris/EDTA buffer pH 9. [ab93684](#) a Goat Anti-mouse IgG H&L (HRP) was used as the secondary antibody. Negative control using PBS instead of primary antibody. Counterstained with hematoxylin. Cytoplasmic staining on macrophages of human tonsil (PMID: 19543531).



Immunohistochemistry (Formalin/PFA-fixed paraffin-embedded sections) - Anti-CD68 antibody [KP1] (ab955)

ab955 staining CD68 in human liver tissue by Immunohistochemistry (Formalin/PFA-fixed paraffin-embedded sections). Tissue was fixed with paraformaldehyde. Samples were then blocked with 10% serum for 3 hours at 22°C followed by incubation with the primary antibody at a 1/100 dilution for 16 hours at 4°C. An Alexa-Fluor® 568 conjugated goat anti-mouse polyclonal was used as secondary antibody at a 1/400 dilution.

Image courtesy of an anonymous Abreview.



Immunohistochemistry (Formalin/PFA-fixed paraffin-embedded sections) - Anti-CD68 antibody [KP1] (ab955)

This image is courtesy of an anonymous Abreview

ab955 staining CD68 in human ulcerated oral (Mucosa/Bone) tissue sections by Immunohistochemistry (IHC-P - paraformaldehyde-fixed, paraffin-embedded sections).

Tissue was fixed with paraformaldehyde, permeabilized with 0.1% Triton-X 100 in PBS and blocked with 2.5% serum for 90 minutes at 25°C; antigen retrieval was by heat mediation in citrate buffer (pH 6). Samples were incubated with primary antibody (1/500 in 1% serum in PBS +0.01% Triton-X 100) for 16 hours at 4°C. A commercial IHC kit and DAB was used to visualize the staining.

Why choose a recombinant antibody?



Research with confidence
Consistent and reproducible results



Long-term and scalable supply
Recombinant technology



Success from the first experiment
Confirmed specificity



Ethical standards compliant
Animal-free production

Anti-CD68 antibody [KP1] (ab955)

Please note: All products are "FOR RESEARCH USE ONLY. NOT FOR USE IN DIAGNOSTIC PROCEDURES"

Our Abpromise to you: Quality guaranteed and expert technical support

- Replacement or refund for products not performing as stated on the datasheet
- Valid for 12 months from date of delivery
- Response to your inquiry within 24 hours
- We provide support in Chinese, English, French, German, Japanese and Spanish
- Extensive multi-media technical resources to help you
- We investigate all quality concerns to ensure our products perform to the highest standards

If the product does not perform as described on this datasheet, we will offer a refund or replacement. For full details of the Abpromise, please visit <https://www.abcam.co.jp/abpromise> or contact our technical team.

Terms and conditions

- Guarantee only valid for products bought direct from Abcam or one of our authorized distributors