

# Anti-CD63 antibody [AD1] ab108950

**30 References**   **画像数 1**

### 製品の概要

製品名	Anti-CD63 antibody [AD1]
製品の詳細	Mouse monoclonal [AD1] to CD63
由来種	Mouse
特異性	Rat CD63 is expressed on mast cells, and studies using clone AD1, have shown that it is located near to FcER1, and that clone AD1 partially inhibits IgE-mediated histamine release
アプリケーション	<b>適用あり:</b> Flow Cyt
種交差性	<b>交差種:</b> Rat
免疫原	Tissue, cells or virus corresponding to CD63. RBL-2H3 rat basophilic leukaemia cell line
ポジティブ・コントロール	Flow Cytometry: Rat peripheral blood platelets.
特記事項	<p>The Life Science industry has been in the grips of a reproducibility crisis for a number of years. Abcam is leading the way in addressing this with our range of recombinant monoclonal antibodies and knockout edited cell lines for gold-standard validation. Please check that this product meets your needs before purchasing.</p> <p>If you have any questions, special requirements or concerns, please send us an inquiry and/or contact our Support team ahead of purchase. Recommended alternatives for this product can be found below, along with publications, customer reviews and Q&amp;As</p>

### 製品の特性

製品の状態	Liquid
保存方法	Shipped at 4°C. Upon delivery aliquot and store at -20°C or -80°C. Avoid repeated freeze / thaw cycles.
バッファー	Preservative: 0.09% Sodium azide Constituent: PBS
精製度	Protein A purified
特記事項(精製)	Purified IgG prepared by affinity chromatography on Protein A from tissue culture supernatant.
ポリ/モノ	モノクローナル
クローン名	AD1
ミエローマ	x63-Ag8.653
アイソタイプ	IgG1

## アプリケーション

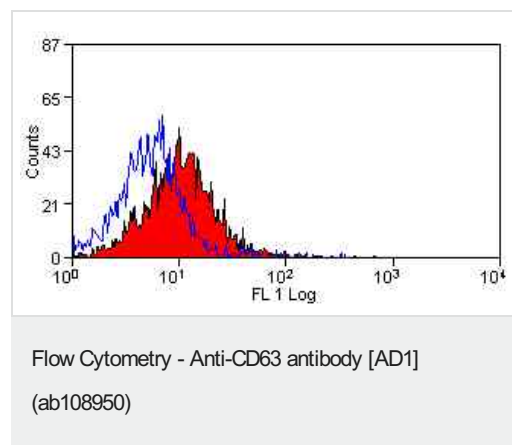
**The Abpromise guarantee** Abpromise保証は、次のテスト済みアプリケーションにおけるab108950の使用に適用されます  
アプリケーションノートには、推奨の開始希釈率がありますが、適切な希釈率につきましてはご確認ください。

アプリケーション	Abreviews	特記事項
Flow Cyt		1/10 - 1/200. <b>ab170190</b> - Mouse monoclonal IgG1, is suitable for use as an isotype control with this antibody.

## ターゲット情報

機能	This antigen is associated with early stages of melanoma tumor progression. May play a role in growth regulation.
組織特異性	Dysplastic nevi, radial growth phase primary melanomas, hematopoietic cells, tissue macrophages.
配列類似性	Belongs to the tetraspanin (TM4SF) family.
細胞内局在	Cell membrane. Lysosome membrane. Late endosome membrane. Also found in Weibel-Palade bodies of endothelial cells. Located in platelet dense granules.

## 画像



Rat peripheral blood platelets stained with AlexaFluor®488 conjugated version of ab108950.

**Please note:** All products are "FOR RESEARCH USE ONLY. NOT FOR USE IN DIAGNOSTIC PROCEDURES"

## Our Abpromise to you: Quality guaranteed and expert technical support

- Replacement or refund for products not performing as stated on the datasheet
- Valid for 12 months from date of delivery
- Response to your inquiry within 24 hours

- We provide support in Chinese, English, French, German, Japanese and Spanish
- Extensive multi-media technical resources to help you
- We investigate all quality concerns to ensure our products perform to the highest standards

If the product does not perform as described on this datasheet, we will offer a refund or replacement. For full details of the Abpromise, please visit <https://www.abcam.co.jp/abpromise> or contact our technical team.

#### **Terms and conditions**

---

- Guarantee only valid for products bought direct from Abcam or one of our authorized distributors