

Anti-CD62L antibody [MEL-14] ab119834

リコンビナント

8 References [画像数 3](#)

製品の概要

製品名	Anti-CD62L antibody [MEL-14]
製品の詳細	Rat monoclonal [MEL-14] to CD62L
由来種	Rat
特異性	ab119834 reacts with mouse CD62L, a 75 kDa single chain type I glycoprotein expressed on most peripheral blood B lymphocytes, T lymphocytes, monocytes and granulocytes; it is also present on a subset of NK cells and certain hematopoietic malignant cells.
アプリケーション	適用あり: Flow Cyt, ICC/IF 適用なし: IHC-P
種交差性	交差種: Mouse
免疫原	Tissue, cells or virus corresponding to Mouse CD62L. C3H/eb Mouse B cell lymphoma 38C-13.
ポジティブ・コントロール	ICC/IF: Mouse spleen cell. Flow Cyt: Mouse splenocytes.
特記事項	This product was switched from a hybridoma to a recombinant production format on 25 th October 2021. This product is a recombinant monoclonal antibody, which offers several advantages including: - High batch-to-batch consistency and reproducibility - Improved sensitivity and specificity - Long-term security of supply - Animal-free production For more information see here .

製品の特性

製品の状態	Liquid
保存方法	Shipped at 4°C. Store at +4°C short term (1-2 weeks). Upon delivery aliquot. Store at -20°C. Avoid freeze / thaw cycle.
バッファー	pH: 7.40 Preservative: 0.01% Sodium azide Constituents: 59% PBS, 40% Glycerol (glycerin, glycerine), 0.05% BSA
精製度	Ion Exchange Chromatography
ポリ/モノ	モノクローナル

クローン名 MEL-14

アイソタイプ IgG2a

アプリケーション

The Abpromise guarantee Abpromise保証は、次のテスト済みアプリケーションにおけるab119834の使用に適用されます
アプリケーションノートには、推奨の開始希釈率がありますが、適切な希釈率につきましてはご検討ください。

アプリケーション	Abreviews	特記事項
Flow Cyt		1/1000.
ICC/IF		1/100.

追加情報 Is unsuitable for IHC-P.

ターゲット情報

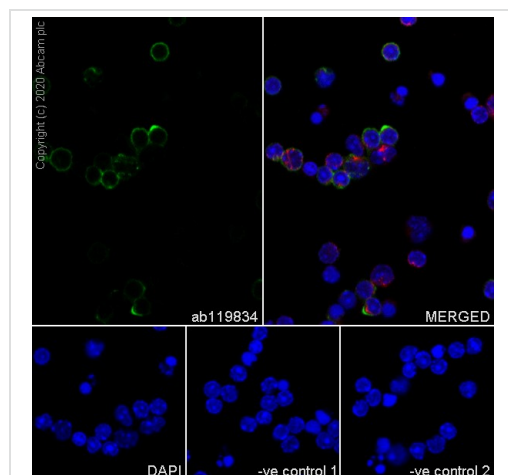
機能 Cell surface adhesion protein. Mediates the adherence of lymphocytes to endothelial cells of high endothelial venules in peripheral lymph nodes. Promotes initial tethering and rolling of leukocytes in endothelia.

組織特異性 Expressed in B cell lines and T lymphocytes.

配列類似性 Belongs to the selectin/LECAM family.
Contains 1 C-type lectin domain.
Contains 1 EGF-like domain.
Contains 2 Sushi (CCP/SCR) domains.

細胞内局在 Membrane.

画像

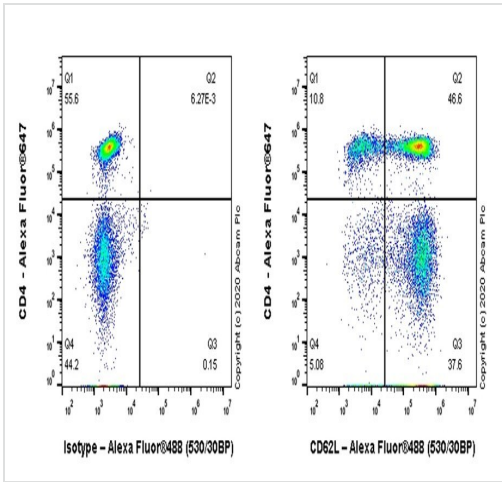


Immunofluorescent analysis of 4% Paraformaldehyde-fixed, 0.1% TritonX-100 permeabilized Mouse spleen cells labelling CD62L with ab119834 at 1/100 dilution, followed by **ab150157** Goat Anti-Rat IgG H&L (Alexa Fluor® 488) antibody at 1/1000 dilution (Green). Confocal image showing membranous staining in some subset of mouse spleen cells is observed. **ab179513** Anti-beta Tubulin rabbit monoclonal antibody was used to counterstain tubulin at 1/200 dilution (Red). The Nuclear counterstain was DAPI (Blue).

-ve control 1: ab119834 at 1/100 dilution, followed by **ab150080** Goat Anti-Rabbit IgG H&L (Alexa Fluor® 594) at 1/1000 dilution.

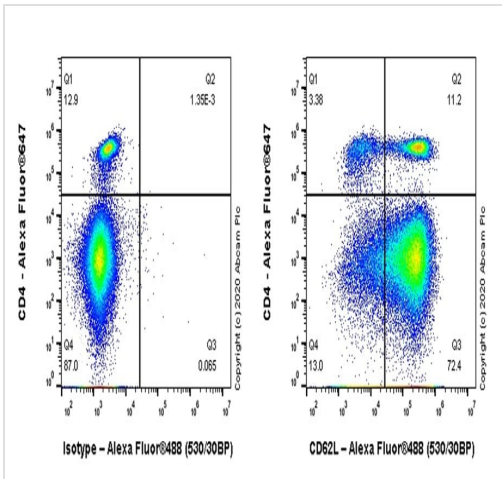
-ve control 2: **ab179513** at 1/200 dilution, followed by **ab150157** Goat Anti-Rat IgG H&L (Alexa Fluor® 488) at 1/1000 dilution.

Immunocytochemistry/ Immunofluorescence - Anti-CD62L antibody [MEL-14] (ab119834)



Flow Cytometry - Anti-CD62L antibody [MEL-14]
(ab119834)

Flow cytometric analysis of Mouse splenocyte cells labelling CD62L with ab119834 at 1/500 dilution (0.2 ug). Goat anti rat IgG (Alexa Fluor® 488, **ab150157**) at 1/2000 dilution was used as the secondary antibody. Cells were stained with rat IgG (Left) or ab119834 (Right). Then stained with anti-CD4 conjugated to Alexa Fluor®647 and anti-CD3 conjugated to PerCP. Gated on viable CD3+ T cells.



Flow Cytometry - Anti-CD62L antibody [MEL-14]
(ab119834)

Flow cytometric analysis of Mouse splenocyte cells labelling CD62L with ab119834 at 1/500 dilution (0.2 ug). Goat anti rat IgG (Alexa Fluor® 488, **ab150157**) at 1/2000 dilution was used as the secondary antibody. Cells were stained with rat IgG (Left) or ab119834 (Right). Then stained with anti-CD4 conjugated to Alexa Fluor®647. Gated on viable lymphocytes.

Please note: All products are "FOR RESEARCH USE ONLY. NOT FOR USE IN DIAGNOSTIC PROCEDURES"

Our Abpromise to you: Quality guaranteed and expert technical support

- Replacement or refund for products not performing as stated on the datasheet
- Valid for 12 months from date of delivery
- Response to your inquiry within 24 hours
- We provide support in Chinese, English, French, German, Japanese and Spanish
- Extensive multi-media technical resources to help you
- We investigate all quality concerns to ensure our products perform to the highest standards

If the product does not perform as described on this datasheet, we will offer a refund or replacement. For full details of the Abpromise, please visit <https://www.abcam.co.jp/abpromise> or contact our technical team.

Terms and conditions

- Guarantee only valid for products bought direct from Abcam or one of our authorized distributors