

Anti-CD62L antibody [B-S13] - BSA and Azide free ab47078

画像数 1

製品の概要

製品名	Anti-CD62L antibody [B-S13] - BSA and Azide free
製品の詳細	Mouse monoclonal [B-S13] to CD62L - BSA and Azide free
由来種	Mouse
特異性	Recognises the Leucocyte Endothelial Cell Adhesion Molecule-1 (LECAM-1), L-selectin, a 74-95 kDa protein. Cross reacts with mouse CD62L protein in cytometry.
アプリケーション	適用あり: Flow Cyt
種交差性	交差種: Human
免疫原	Tissue, cells or virus corresponding to CD62L. CD62L transfected CHO cell line
ポジティブ・コントロール	Human lymphocytes
特記事項	<p>This product was changed from ascites to tissue culture supernatant on 4th April 2019. Please note that the dilutions may need to be adjusted accordingly. If you have any questions, please do not hesitate to contact our scientific support team.</p> <p>The Life Science industry has been in the grips of a reproducibility crisis for a number of years. Abcam is leading the way in addressing this with our range of recombinant monoclonal antibodies and knockout edited cell lines for gold-standard validation. Please check that this product meets your needs before purchasing.</p> <p>If you have any questions, special requirements or concerns, please send us an inquiry and/or contact our Support team ahead of purchase. Recommended alternatives for this product can be found below, along with publications, customer reviews and Q&As</p>

製品の特性

製品の状態	Liquid
保存方法	Shipped at 4°C. Store at +4°C short term (1-2 weeks). Upon delivery aliquot. Store at -20°C or -80°C. Avoid freeze / thaw cycle.
バッファー	<p>pH: 7.30</p> <p>Constituent: 100% PBS</p> <p>Sterile-filtered through 0.22 µm. Carrier and preservative free</p>
キャリア・フリー	はい
精製度	Tissue culture supernatant

ポリ/モノ	モノクローナル
クローン名	B-S13
ミエローマ	x63-Ag8.653
アイソタイプ	IgG1
軽鎖の種類	kappa

アプリケーション

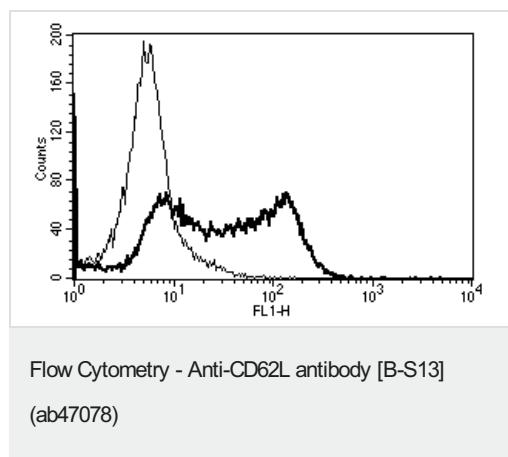
The Abpromise guarantee **Abpromise保証は、次のテスト済みアプリケーションにおけるab47078の使用に適用されます**
 アプリケーションノートには、推奨の開始希釈率がありますが、適切な希釈率につきましてはご検討ください。

アプリケーション	Abreviews	特記事項
Flow Cyt		Use at an assay dependent concentration. ab170190 - Mouse monoclonal IgG1, is suitable for use as an isotype control with this antibody.

ターゲット情報

機能	Cell surface adhesion protein. Mediates the adherence of lymphocytes to endothelial cells of high endothelial venules in peripheral lymph nodes. Promotes initial tethering and rolling of leukocytes in endothelia.
組織特異性	Expressed in B cell lines and T lymphocytes.
配列類似性	Belongs to the selectin/LECAM family. Contains 1 C-type lectin domain. Contains 1 EGF-like domain. Contains 2 Sushi (CCP/SCR) domains.
細胞内局在	Membrane.

画像



A typical staining pattern with ab47078 of lymphocytes.

This image was generated using the ascites version of the product.

Please note: All products are "FOR RESEARCH USE ONLY. NOT FOR USE IN DIAGNOSTIC PROCEDURES"

Our Abpromise to you: Quality guaranteed and expert technical support

- Replacement or refund for products not performing as stated on the datasheet
- Valid for 12 months from date of delivery
- Response to your inquiry within 24 hours

- We provide support in Chinese, English, French, German, Japanese and Spanish
- Extensive multi-media technical resources to help you
- We investigate all quality concerns to ensure our products perform to the highest standards

If the product does not perform as described on this datasheet, we will offer a refund or replacement. For full details of the Abpromise, please visit <https://www.abcam.co.jp/abpromise> or contact our technical team.

Terms and conditions

- Guarantee only valid for products bought direct from Abcam or one of our authorized distributors