


Anti-CD55 antibody [MEM-118] ab1422

★★★★★ [1 Abreviews](#) [5 References](#) [画像数 1](#)

製品の概要

製品名	Anti-CD55 antibody [MEM-118]
製品の詳細	Mouse monoclonal [MEM-118] to CD55
由来種	Mouse
アプリケーション	適用あり: Flow Cyt
種交差性	交差種: Human 交差が予測される動物種: Non human primates 
免疫原	Tissue, cells or virus corresponding to Human CD55. T cell line HPB-ALL
特記事項	<p>This product was changed from ascites to tissue culture supernatant on 24th Januray 2018. Please note that the dilutions may need to be adjusted accordingly. If you have any questions, please do not hesitate to contact our scientific support team.</p> <p>The Life Science industry has been in the grips of a reproducibility crisis for a number of years. Abcam is leading the way in addressing this with our range of recombinant monoclonal antibodies and knockout edited cell lines for gold-standard validation. Please check that this product meets your needs before purchasing.</p> <p>If you have any questions, special requirements or concerns, please send us an inquiry and/or contact our Support team ahead of purchase. Recommended alternatives for this product can be found below, along with publications, customer reviews and Q&As</p>

製品の特性

製品の状態	Liquid
保存方法	Shipped at 4°C. Store at +4°C short term (1-2 weeks). Upon delivery aliquot. Store at -20°C or -80°C. Avoid freeze / thaw cycle.
バッファー	pH: 8.0 Preservative: 0.097% Sodium azide Constituent: PBS
精製度	Proprietary Purification
特記事項(精製)	Purified from TCS. Purified by precipitation and chromatography. Purity >95% by SDS-PAGE.
ポリ/モノ	モノクローナル
クローン名	MEM-118

アプリケーション

The Abpromise guarantee

Abpromise保証は、次のテスト済みアプリケーションにおけるab1422の使用に適用されます

アプリケーションノートには、推奨の開始希釈率がありますが、適切な希釈率につきましてはご検討ください。

アプリケーション	Abreviews	特記事項
Flow Cyt		Use 1µg for 10 ⁶ cells. ab91545 - Mouse monoclonal IgM, is suitable for use as an isotype control with this antibody.

ターゲット情報

機能

This protein recognizes C4b and C3b fragments that condense with cell-surface hydroxyl or amino groups when nascent C4b and C3b are locally generated during C4 and c3 activation. Interaction of daf with cell-associated C4b and C3b polypeptides interferes with their ability to catalyze the conversion of C2 and factor B to enzymatically active C2a and Bb and thereby prevents the formation of C4b2a and C3bBb, the amplification convertases of the complement cascade.

組織特異性

Expressed on the plasma membranes of all cell types that are in intimate contact with plasma complement proteins. It is also found on the surfaces of epithelial cells lining extracellular compartments, and variants of the molecule are present in body fluids and in extracellular matrix.

配列類似性

Belongs to the receptors of complement activation (RCA) family.
Contains 4 Sushi (CCP/SCR) domains.

ドメイン

The first Sushi domain (SCR1) is not necessary for function. SCR2 and SCR4 provide the proper conformation for the active site on SCR3.

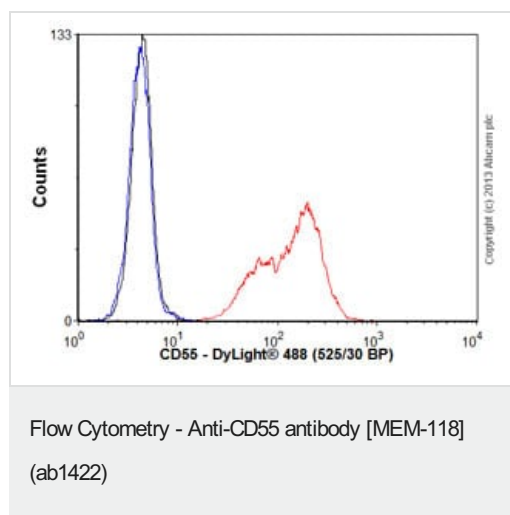
翻訳後修飾

The Ser/Thr-rich domain is heavily O-glycosylated.

細胞内局在

Cell membrane.

画像



Human peripheral blood lymphocytes stained with ab1422 (red line). Human whole blood was processed using a modified protocol based on Chow *et al*, 2005 (PMID: 16080188). In brief, human whole blood was fixed in 4% formaldehyde (methanol-free) for 10 min at 22°C. Red blood cells were then lysed by the addition of Triton X-100 (final concentration - 0.1%) for 15 min at 37°C. For experimentation, cells were treated with 50% methanol (-20°C) for 15 min at 4°C. Cells were then incubated with the antibody (ab1422, 1µg/1x10⁶ cells) for 30 min at 4°C. The secondary antibody used was DyLight® 488 goat anti-mouse IgM (mu chain) (**ab97007**) at 1/500 dilution for 30 min at 4°C. Isotype control antibody (black line) was mouse IgM [ICIGM] (**ab91545**, 1µg/1x10⁶

cells) used under the same conditions. Unlabelled sample (blue line) was also used as a control. Acquisition of >30,000 total events were collected using a 20mW Argon ion laser (488nm) and 525/30 bandpass filter. Gating strategy - peripheral blood lymphocytes.

Please note: All products are "FOR RESEARCH USE ONLY. NOT FOR USE IN DIAGNOSTIC PROCEDURES"

Our Abpromise to you: Quality guaranteed and expert technical support

- Replacement or refund for products not performing as stated on the datasheet
- Valid for 12 months from date of delivery
- Response to your inquiry within 24 hours
- We provide support in Chinese, English, French, German, Japanese and Spanish
- Extensive multi-media technical resources to help you
- We investigate all quality concerns to ensure our products perform to the highest standards

If the product does not perform as described on this datasheet, we will offer a refund or replacement. For full details of the Abpromise, please visit <https://www.abcam.co.jp/abpromise> or contact our technical team.

Terms and conditions

- Guarantee only valid for products bought direct from Abcam or one of our authorized distributors