

### Anti-CD45 antibody [YTH24.5] ab30446

[7 References](#) [画像数 1](#)

#### 製品の概要

---

製品名	Anti-CD45 antibody [YTH24.5]
製品の詳細	Rat monoclonal [YTH24.5] to CD45
由来種	Rat
アプリケーション	<b>適用あり:</b> Flow Cyt
種交差性	<b>交差種:</b> Human
免疫原	Tissue, cells or virus corresponding to Human CD45. Human T lymphocytes.
特記事項	<p>The Life Science industry has been in the grips of a reproducibility crisis for a number of years. Abcam is leading the way in addressing this with our range of recombinant monoclonal antibodies and knockout edited cell lines for gold-standard validation. Please check that this product meets your needs before purchasing.</p> <p>If you have any questions, special requirements or concerns, please send us an inquiry and/or contact our Support team ahead of purchase. Recommended alternatives for this product can be found below, along with publications, customer reviews and Q&amp;As</p>

#### 製品の特性

---

製品の状態	Liquid
保存方法	Shipped at 4°C. Store at +4°C short term (1-2 weeks). Upon delivery aliquot. Store at -20°C or -80°C. Avoid freeze / thaw cycle.
バッファー	Preservative: 0.09% Sodium azide Constituent: PBS
精製度	Protein A purified
特記事項(精製)	Immunoglobulin fraction prepared by ammonium sulphate precipitation.
ポリ/モノ	モノクローナル
クローン名	YTH24.5
ミエローマ	Y3/Ag1.2.3
アイソタイプ	IgG2b

#### アプリケーション

---

## The Abpromise guarantee

**Abpromise保証は、次のテスト済みアプリケーションにおけるab30446の使用に適用されます**

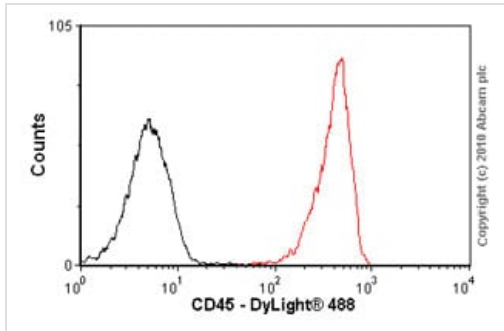
アプリケーションノートには、推奨の開始希釈率がありますが、適切な希釈率につきましてはご検討ください。

アプリケーション	Abreviews	特記事項
Flow Cyt		Use 1µg for 10 <sup>6</sup> cells. <b>ab18536</b> - Rat monoclonal IgG2b, is suitable for use as an isotype control with this antibody.

## ターゲット情報

機能	Protein tyrosine-protein phosphatase required for T-cell activation through the antigen receptor. Acts as a positive regulator of T-cell coactivation upon binding to DPP4. The first PTPase domain has enzymatic activity, while the second one seems to affect the substrate specificity of the first one. Upon T-cell activation, recruits and dephosphorylates SKAP1 and FYN.
関連疾患	Defects in PTPRC are a cause of severe combined immunodeficiency autosomal recessive T-cell-negative/B-cell-positive/NK-cell-positive (T(-)B(+)NK(+)) SCID [MIM:608971]. A form of severe combined immunodeficiency (SCID), a genetically and clinically heterogeneous group of rare congenital disorders characterized by impairment of both humoral and cell-mediated immunity, leukopenia, and low or absent antibody levels. Patients present in infancy recurrent, persistent infections by opportunistic organisms. The common characteristic of all types of SCID is absence of T-cell-mediated cellular immunity due to a defect in T-cell development. Genetic variations in PTPRC are involved in multiple sclerosis susceptibility (MS) [MIM:126200]. MS is a neurodegenerative disorder characterized by the gradual accumulation of focal plaques of demyelination particularly in the periventricular areas of the brain. Peripheral nerves are not affected. Onset usually in third or fourth decade with intermittent progression over an extended period. The cause is still uncertain.
配列類似性	Belongs to the protein-tyrosine phosphatase family. Receptor class 1/6 subfamily. Contains 2 fibronectin type-III domains. Contains 2 tyrosine-protein phosphatase domains.
ドメイン	The first PTPase domain interacts with SKAP1.
翻訳後修飾	Heavily N- and O-glycosylated.
細胞内局在	Membrane. Membrane raft. Colocalized with DPP4 in membrane rafts.

## 画像



Flow Cytometry - Anti-CD45 antibody [YTH24.5]  
(ab30446)

Overlay histogram showing peripheral blood lymphocytes stained with ab30446 (red line). The cells were incubated with the antibody (ab30446, 1µg/1x10<sup>6</sup> cells) for 30 min at 4°C. The secondary antibody used was DyLight® 488 goat anti-rat IgG (Fc) (**ab96971**) at 1/250 dilution for 30 min at 22°C. Isotype control antibody (black line) was rat IgG2b [RTK4530] (**ab18541**, 2µg/1x10<sup>6</sup> cells) used under the same conditions. Acquisition of >5,000 events was performed gating on peripheral blood lymphocytes.

**Please note:** All products are "FOR RESEARCH USE ONLY. NOT FOR USE IN DIAGNOSTIC PROCEDURES"

### Our Abpromise to you: Quality guaranteed and expert technical support

- Replacement or refund for products not performing as stated on the datasheet
- Valid for 12 months from date of delivery
- Response to your inquiry within 24 hours
- We provide support in Chinese, English, French, German, Japanese and Spanish
- Extensive multi-media technical resources to help you
- We investigate all quality concerns to ensure our products perform to the highest standards

If the product does not perform as described on this datasheet, we will offer a refund or replacement. For full details of the Abpromise, please visit <https://www.abcam.co.jp/abpromise> or contact our technical team.

### Terms and conditions

- Guarantee only valid for products bought direct from Abcam or one of our authorized distributors