


Anti-CD40 antibody ab58391

★★★★☆ [3 Abreviews](#) [5 References](#) [画像数 2](#)

製品の概要

製品名	Anti-CD40 antibody
製品の詳細	Rabbit polyclonal to CD40
由来種	Rabbit
アプリケーション	適用あり: WB, IHC-P
種交差性	交差種: Human, African green monkey 交差が予測される動物種: Mouse 
免疫原	Synthetic peptide derived from the C-terminal of CD40 (Human)
特記事項	<p>The Life Science industry has been in the grips of a reproducibility crisis for a number of years. Abcam is leading the way in addressing this with our range of recombinant monoclonal antibodies and knockout edited cell lines for gold-standard validation. Please check that this product meets your needs before purchasing.</p> <p>If you have any questions, special requirements or concerns, please send us an inquiry and/or contact our Support team ahead of purchase. Recommended alternatives for this product can be found below, along with publications, customer reviews and Q&As</p>

製品の特性

製品の状態	Liquid
保存方法	Shipped at 4°C. Store at -20°C. Stable for 12 months at -20°C.
バッファー	pH: 7.40 Preservative: 0.02% Sodium azide Constituents: PBS, 50% Glycerol, 0.87% Sodium chloride
精製度	Without Mg+2 and Ca+2 Immunogen affinity purified
特記事項(精製)	Purified from rabbit antiserum.
ポリ/モノ	ポリクローナル
アイソタイプ	IgG

アプリケーション

The Abpromise guarantee

Abpromise保証は、次のテスト済みアプリケーションにおけるab58391の使用に適用されます

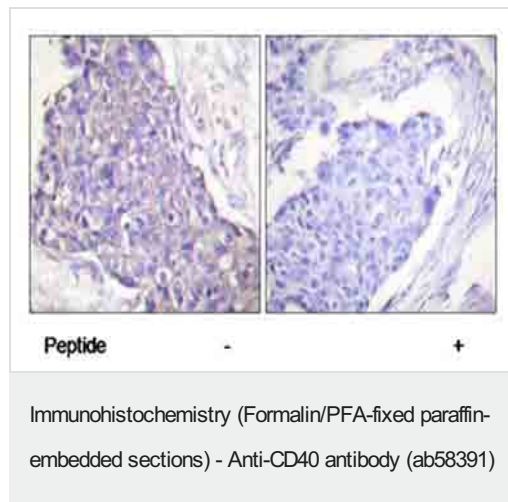
アプリケーションノートには、推奨の開始希釈率がありますが、適切な希釈率につきましてはご検討ください。

アプリケーション	Abreviews	特記事項
WB	★★★★★ (1)	1/500 - 1/1000. Detects a band of approximately 31 kDa (predicted molecular weight: 31 kDa).
IHC-P		Use at an assay dependent concentration.

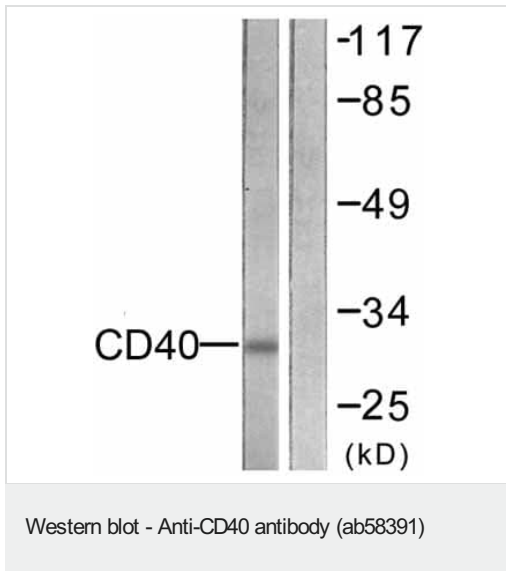
ターゲット情報

機能	Receptor for TNFSF5/CD40LG.
組織特異性	B-cells and in primary carcinomas.
関連疾患	Defects in CD40 are the cause of hyper-IgM immunodeficiency syndrome type 3 (HIGM3) [MIM:606843]; also known as hyper-IgM syndrome 3. HIGM3 is an autosomal recessive disorder which includes an inability of B cells to undergo isotype switching, one of the final differentiation steps in the humoral immune system, an inability to mount an antibody-specific immune response, and a lack of germinal center formation.
配列類似性	Contains 4 TNFR-Cys repeats.
細胞内局在	Secreted and Cell membrane.

画像



ab58391, at 1/50 dilution, staining human CD40 in breast carcinoma tissue, by immunohistochemistry, in the presence or absence of the immunizing peptide. Paraffin embedded tissue.



All lanes : Anti-CD40 antibody (ab58391) at 1/500 dilution

Lane 1 : COS7 cell extract with no immunizing peptide

Lane 2 : COS7 cell extract with immunizing peptide

Predicted band size: 31 kDa

Observed band size: 31 kDa

Please note: All products are "FOR RESEARCH USE ONLY. NOT FOR USE IN DIAGNOSTIC PROCEDURES"

Our Abpromise to you: Quality guaranteed and expert technical support

- Replacement or refund for products not performing as stated on the datasheet
- Valid for 12 months from date of delivery
- Response to your inquiry within 24 hours
- We provide support in Chinese, English, French, German, Japanese and Spanish
- Extensive multi-media technical resources to help you
- We investigate all quality concerns to ensure our products perform to the highest standards

If the product does not perform as described on this datasheet, we will offer a refund or replacement. For full details of the Abpromise, please visit <https://www.abcam.co.jp/abpromise> or contact our technical team.

Terms and conditions

- Guarantee only valid for products bought direct from Abcam or one of our authorized distributors