

Anti-CD4 antibody [SP35], prediluted ab101530

リコンビナント **RabMAb**

★★★★★ [1 Abreviews](#) [3 References](#) [画像数 3](#)

製品の概要

製品名	Anti-CD4 antibody [SP35], prediluted
製品の詳細	Rabbit monoclonal [SP35] to CD4, prediluted
由来種	Rabbit
アプリケーション	適用あり: Flow Cyt, IHC-P
種交差性	交差種: Human
免疫原	Synthetic peptide. This information is considered to be commercially sensitive.
ポジティブ・コントロール	Human Tonsil, Human T cell lymphoma
特記事項	This product is FOR RESEARCH USE ONLY. For commercial use, please contact partnerships@abcam.com.

製品の特性

製品の状態	Liquid
保存方法	Shipped at 4°C. Store at +4°C. Do Not Freeze.
バッファー	pH: 7.60 Preservative: 0.1% Sodium azide Constituents: Tris buffered saline, 1% BSA
精製度	Protein A/G purified
特記事項(精製)	Purified from TCS by protein A/G.
ポリ/モノ	モノクローナル
クローン名	SP35
アイソタイプ	IgG

アプリケーション

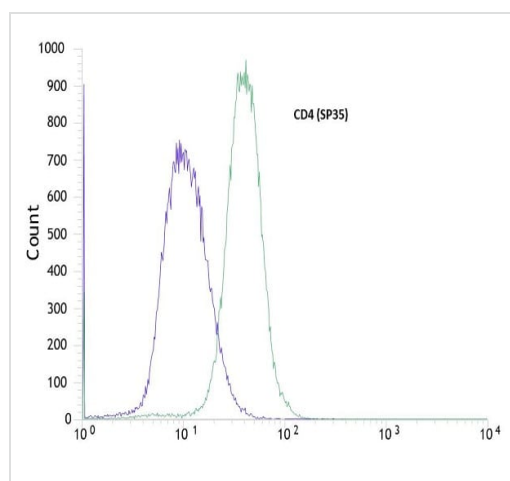
The Abpromise guarantee **Abpromise保証は、** 次のテスト済みアプリケーションにおけるab101530の使用に適用されます
アプリケーションノートには、推奨の開始希釈率がありますが、適切な希釈率につきましてはご検討ください。

アプリケーション	Abreviews	特記事項
Flow Cyt		Use at an assay dependent concentration. ab172730 - Rabbit monoclonal IgG, is suitable for use as an isotype control with this antibody.
IHC-P		Use at an assay dependent concentration. Antigen retrieval is recommended: Boil tissue section in 10mM citrate buffer, pH 6.0 for 10 min followed by cooling at RT for 20 min.

ターゲット情報

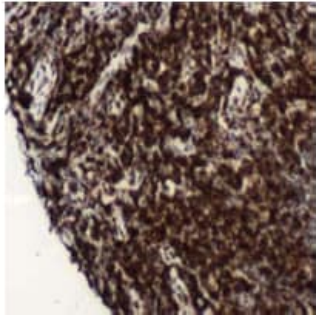
機能	Accessory protein for MHC class-II antigen/T-cell receptor interaction. May regulate T-cell activation. Induces the aggregation of lipid rafts.
配列類似性	Contains 3 Ig-like C2-type (immunoglobulin-like) domains. Contains 1 Ig-like V-type (immunoglobulin-like) domain.
翻訳後修飾	Palmitoylation and association with LCK contribute to the enrichment of CD4 in lipid rafts.
細胞内局在	Cell membrane. Localizes to lipid rafts. Removed from plasma membrane by HIV-1 Nef protein that increases clathrin-dependent endocytosis of this antigen to target it to lysosomal degradation. Cell surface expression is also down-modulated by HIV-1 Envelope polyprotein gp160 that interacts with, and sequesters CD4 in the endoplasmic reticulum.

画像



Flow cytometric analysis of rabbit anti-CD4 (SP35) antibody, prediluted, ab101530 in Jurkats cells (green) compared to negative control of rabbit IgG (blue)

Flow Cytometry - Anti-CD4 antibody [SP35], prediluted (ab101530)



Staining of Human CD4 in a Formalin/PFA-fixed paraffin-embedded section of Human T cell lymphoma using ab101530 at a dilution of 1/1.

Immunohistochemistry (Formalin/PFA-fixed paraffin-embedded sections) - Anti-CD4 antibody [SP35], prediluted (ab101530)

Why choose a recombinant antibody?



Research with confidence
Consistent and reproducible results



Long-term and scalable supply
Recombinant technology



Success from the first experiment
Confirmed specificity



Ethical standards compliant
Animal-free production

Anti-CD4 antibody [SP35], prediluted (ab101530)

Please note: All products are "FOR RESEARCH USE ONLY. NOT FOR USE IN DIAGNOSTIC PROCEDURES"

Our Abpromise to you: Quality guaranteed and expert technical support

- Replacement or refund for products not performing as stated on the datasheet
- Valid for 12 months from date of delivery
- Response to your inquiry within 24 hours
- We provide support in Chinese, English, French, German, Japanese and Spanish
- Extensive multi-media technical resources to help you
- We investigate all quality concerns to ensure our products perform to the highest standards

If the product does not perform as described on this datasheet, we will offer a refund or replacement. For full details of the Abpromise, please visit <https://www.abcam.co.jp/abpromise> or contact our technical team.

Terms and conditions

- Guarantee only valid for products bought direct from Abcam or one of our authorized distributors