


# Anti-CD32B + CD32A antibody [AT10] - BSA free ab41899

**14 References**    **画像数 2**

### 製品の概要

製品名	Anti-CD32B + CD32A antibody [AT10] - BSA free
製品の詳細	Mouse monoclonal [AT10] to CD32B + CD32A - BSA free
由来種	Mouse
アプリケーション	<b>適用あり:</b> Flow Cyt (Intra), ICC/IF
種交差性	<b>交差種:</b> Human <b>交差が予測される動物種:</b> Dog 
免疫原	Tissue, cells or virus. This information is proprietary to Abcam and/or its suppliers.
特記事項	<p>This antibody clone is manufactured by Abcam. If you require a custom buffer formulation or conjugation for your experiments, please contact <a href="mailto:orders@abcam.com">orders@abcam.com</a>.</p> <p>The Life Science industry has been in the grips of a reproducibility crisis for a number of years. Abcam is leading the way in addressing this with our range of recombinant monoclonal antibodies and knockout edited cell lines for gold-standard validation. Please check that this product meets your needs before purchasing.</p> <p>If you have any questions, special requirements or concerns, please send us an inquiry and/or contact our Support team ahead of purchase. Recommended alternatives for this product can be found below, along with publications, customer reviews and Q&amp;As</p>

### 製品の特性

製品の状態	Liquid
保存方法	Shipped at 4°C. Upon delivery aliquot and store at -20°C. Avoid freeze / thaw cycles.
バッファー	pH: 7.40 Preservative: 0.02% Sodium azide Constituents: PBS, 6.97% L-Arginine
キャリア・フリー	はい
精製度	Protein G purified
ポリ/モノ	モノクローナル
クローン名	AT10
ミエローマ	NS1

アイソタイプ	IgG1
軽鎖の種類	kappa

## アプリケーション

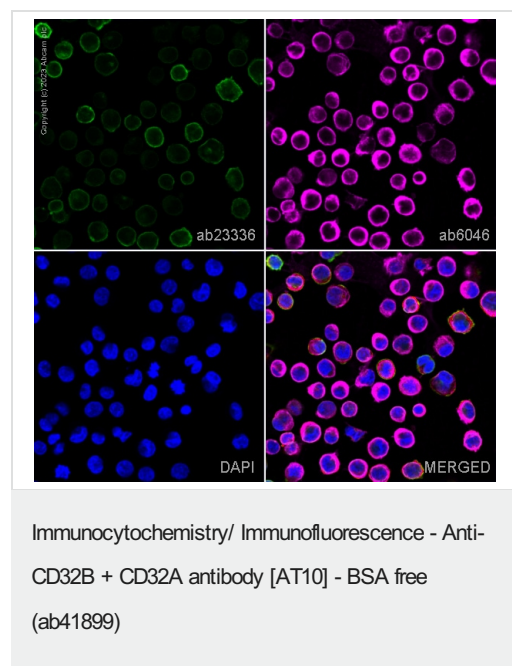
**The Abpromise guarantee**      Abpromise保証は、次のテスト済みアプリケーションにおけるab41899の使用に適用されます  
アプリケーションノートには、推奨の開始希釈率がありますが、適切な希釈率につきましてはご検討ください。

アプリケーション	Abreviews	特記事項
Flow Cyt (Intra)		Use 1µg for 10 <sup>6</sup> cells. <b>ab170190</b> - Mouse monoclonal IgG1, is suitable for use as an isotype control with this antibody.
ICC/IF		Use at an assay dependent concentration.

## ターゲット情報

細胞内局在 CD32B: Cell membrane. CD32A: Cell membrane.

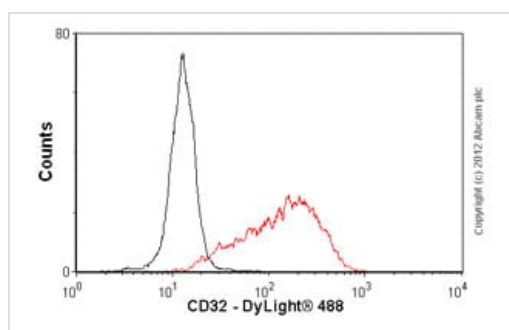
## 画像



This data was developed using the same antibody clone in a different buffer formulation containing BSA and sodium azide (**ab23336**).

**ab23336** staining CD32B + CD32A in K-562 cells. The cells were fixed with 4% paraformaldehyde (10 min), permeabilized with 0.1% PBS-Tween for 5 minutes and then blocked with 1% BSA/10% normal goat serum/0.3M glycine in 0.1% PBS-Tween for 1h. The cells were then incubated overnight at 4°C with **ab23336** at 5µg/ml and **ab6046**, Rabbit polyclonal to beta Tubulin - Loading Control. Cells were then incubated with **ab150117**, Goat polyclonal Secondary Antibody to Mouse IgG H&L (Alexa Fluor® 488) preadsorbed at 1/1000 dilution (shown in green) and **ab150080**, Goat polyclonal Secondary Antibody to Rabbit IgG - H&L (Alexa Fluor® 594) at 1/1000 dilution (shown in pseudocolour magenta). Nuclear DNA was labelled with DAPI (shown in blue).

Image was acquired with a confocal microscope (Leica-Microsystems TCS SP8) and a single confocal section is shown..



Flow Cytometry (Intracellular) - Anti-CD32B +  
CD32A antibody [AT10] - BSA free (ab41899)

Overlay histogram showing K562 cells stained with ab41899 (red line). The cells were fixed with 80% methanol (5 min) and incubated in 1x PBS / 10% normal goat serum / 0.3M glycine to block non-specific protein-protein interactions. The cells were then incubated with the antibody (ab41899, 1 µg/1x10<sup>6</sup> cells) for 30 min at 22°C. The secondary antibody used was DyLight® goat anti-mouse IgG (H+L) ([ab96879](#)) at 1/500 dilution for 30 min at 22°C. Isotype control antibody (black line) was mouse IgG1 [ICIGG1] ([ab91353](#), 2 µg/1x10<sup>6</sup> cells) used under the same conditions. Acquisition of >5,000 events was performed. This antibody gave a positive result in 4% paraformaldehyde (10 min) fixed K562 cells used under the same conditions.

Please note that Abcam do not have any data for use of this antibody on non-fixed cells. We welcome any customer feedback.

**Please note:** All products are "FOR RESEARCH USE ONLY. NOT FOR USE IN DIAGNOSTIC PROCEDURES"

### Our Abpromise to you: Quality guaranteed and expert technical support

- Replacement or refund for products not performing as stated on the datasheet
- Valid for 12 months from date of delivery
- Response to your inquiry within 24 hours
- We provide support in Chinese, English, French, German, Japanese and Spanish
- Extensive multi-media technical resources to help you
- We investigate all quality concerns to ensure our products perform to the highest standards

If the product does not perform as described on this datasheet, we will offer a refund or replacement. For full details of the Abpromise, please visit <https://www.abcam.co.jp/abpromise> or contact our technical team.

### Terms and conditions

- Guarantee only valid for products bought direct from Abcam or one of our authorized distributors