

# Anti-CD31 antibody [EPR17260-254] ab213175

リコンビナント RabMAb<sup>®</sup>

画像数 6

### 製品の概要

製品名	Anti-CD31 antibody [EPR17260-254]
製品の詳細	Rabbit monoclonal [EPR17260-254] to CD31
由来種	Rabbit
特異性	Not suitable for FC-Mouse.
アプリケーション	<b>適用あり:</b> WB, IP, Sandwich ELISA <b>適用なし:</b> Flow Cyt
種交差性	<b>交差種:</b> Mouse, Rat
免疫原	Recombinant fragment. This information is proprietary to Abcam and/or its suppliers.
ポジティブ・コントロール	WB: Mouse CD31 active protein; mouse and rat platelet and lung lysates; bEnd.3 whole cell lysate. IP: bEnd.3 whole cell lysate.
特記事項	<p>This product is a recombinant monoclonal antibody, which offers several advantages including:</p> <ul style="list-style-type: none"><li>- High batch-to-batch consistency and reproducibility</li><li>- Improved sensitivity and specificity</li><li>- Long-term security of supply</li><li>- Animal-free production</li></ul> <p>For more information <a href="#">see here</a>.</p> <p>Our RabMAb<sup>®</sup> technology is a patented hybridoma-based technology for making rabbit monoclonal antibodies. For details on our patents, please refer to <a href="#">RabMAb<sup>®</sup> patents</a>.</p>

### 製品の特性

製品の状態	Liquid
保存方法	Shipped at 4°C. Store at +4°C short term (1-2 weeks). Upon delivery aliquot. Store at -20°C long term. Avoid freeze / thaw cycle.
バッファー	pH: 7.2 Preservative: 0.01% Sodium azide Constituents: 59% PBS, 40% Glycerol (glycerin, glycerine), 0.05% BSA
精製度	Protein A purified
ポリ/モノ	モノクローナル



<b>ドメイン</b>	The Ig-like C2-type domains 2 and 3 contribute to formation of the complex with BDKRB2 and in regulation of its activity.
<b>翻訳後修飾</b>	Phosphorylated on Ser and Tyr residues after cellular activation. In endothelial cells Fyn mediates mechanical-force (stretch or pull) induced tyrosine phosphorylation.
<b>細胞内局在</b>	Membrane. Cell junction. Localizes to the lateral border recycling compartment (LBRC) and recycles from the LBRC to the junction in resting endothelial cells and Cell junction. Localizes to the lateral border recycling compartment (LBRC) and recycles from the LBRC to the junction in resting endothelial cells.

**画像**



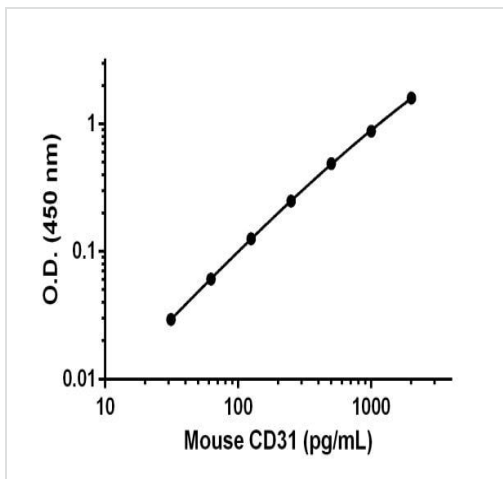
Immunohistochemistry - Anti-CD31 antibody [EPR17260-254] (ab213175)

Anti-CD31 [ab213175](#) was used with Tissue clearing kit – CUBIC ([ab316246](#)) and 3D Tissue Staining Kit – CUBIC ([ab316248](#)) to penetrate, stain and clear a whole mouse brain.

Learn more about **[tissue clearing kits, reagents, and protocols](#)** designed to make it easier to stain whole brains and get more data from each valuable tissue sample.

For a whole mouse brain, we recommend starting with 10 ug of [ab213175](#) and using a Fab fragment secondary antibody with 6.67 µg to create an antibody complex before 3D staining (see protocol for details). No additive was used during the staining process.

The sample was imaged using a light-sheet microscopy.

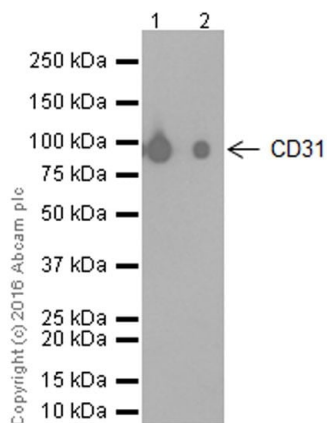


Sandwich ELISA - Anti-CD31 antibody [EPR17260-254] (ab213175)

Example of mouse CD31 standard curve in 1X Cell Extraction Buffer PTR using recombinant CD31 antibody (ab213175) and a recombinant monoclonal antibody. Background-subtracted data values (mean +/- SD) are graphed.

For a matched antibody pair set, see Mouse CD31 Matched Antibody Pair Kit ([ab212065](#)).

For a complete ELISA kit, see Mouse CD31 ELISA kit ([ab204527](#)).



Western blot - Anti-CD31 antibody [EPR17260-254] (ab213175)

**Lane 1** : Anti-CD31 antibody [EPR17260-254] (ab213175) at 1/20000 dilution

**Lane 2** : Anti-CD31 antibody [EPR17260-254] (ab213175) at 1/100000 dilution

**All lanes** : Mouse CD31 active protein

Lysates/proteins at 0.01 µg per lane.

### Secondary

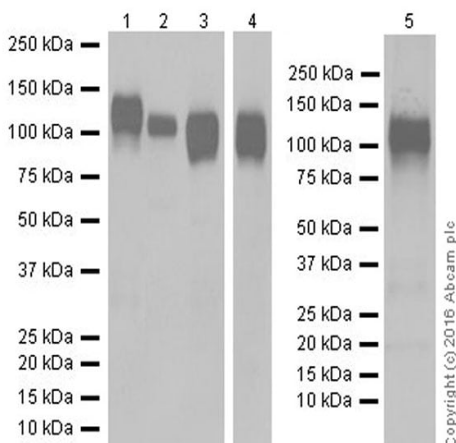
**All lanes** : Goat Anti-Rabbit IgG H&L (HRP) (**ab97051**) at 1/20000 dilution

**Predicted band size:** 81 kDa

**Observed band size:** 100 kDa

**Exposure time:** 3 minutes

Blocking/Dilution buffer: 5% NFDM/TBST.



Western blot - Anti-CD31 antibody [EPR17260-254] (ab213175)

**Lanes 1-4** : Anti-CD31 antibody [EPR17260-254] (ab213175) at 1/1000 dilution

**Lane 5** : Anti-CD31 antibody [EPR17260-254] (ab213175) at 1/2000 dilution

**Lane 1** : Mouse platelet lysate

**Lane 2** : Rat platelet lysate

**Lane 3** : Rat lung lysate

**Lane 4** : Mouse lung lysate

**Lane 5** : bEnd.3 (Mouse brain endothelioma cell line) whole cell lysate

Lysates/proteins at 10 µg per lane.

### Secondary

**All lanes** : Goat Anti-Rabbit IgG H&L (HRP) (**ab97051**) at 1/100000 dilution

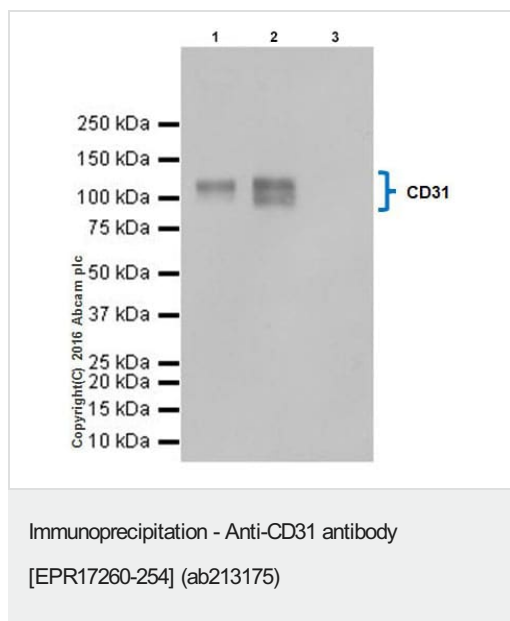
**Predicted band size:** 81 kDa

**Observed band size:** 110-130 kDa

Blocking/Dilution buffer: 5% NFDm/TBST.

Exposure time: Lane 1-3: 10 seconds; Lane 4/5: 1 second.

The expression MW observed is consistent with what has been described in the literature (PMID: 18388311; 12433657).



CD31 was immunoprecipitated from 1 mg of bEnd.3 (Mouse brain endothelioma cell line) whole cell lysate with ab213175 at 1/40 dilution.

Western blot was performed from the immunoprecipitate using ab213175 at 1/1000 dilution.

VeriBlot for IP Detection Reagent (HRP) ([ab131366](#)), was used for detection at 1/10,000 dilution

Lane 1: bEnd.3 whole cell lysate 10µg (Input). Lane 2: ab213175 IP in bEnd.3 whole cell lysate. Lane 3: Rabbit monoclonal IgG ([ab172730](#)) instead of ab213175 in bEnd.3 whole cell lysate.

Blocking and dilution buffer and concentration: 5% NFDm/TBST.

Exposure time: 10 seconds.

Why choose a recombinant antibody?

<p><b>Research with confidence</b> Consistent and reproducible results</p>	<p><b>Long-term and scalable supply</b> Recombinant technology</p>
<p><b>Success from the first experiment</b> Confirmed specificity</p>	<p><b>Ethical standards compliant</b> Animal-free production</p>

Anti-CD31 antibody [EPR17260-254] (ab213175)

**Please note:** All products are "FOR RESEARCH USE ONLY. NOT FOR USE IN DIAGNOSTIC PROCEDURES"

### Our Abpromise to you: Quality guaranteed and expert technical support

- Replacement or refund for products not performing as stated on the datasheet

- Valid for 12 months from date of delivery
- Response to your inquiry within 24 hours
  
- We provide support in Chinese, English, French, German, Japanese and Spanish
- Extensive multi-media technical resources to help you
- We investigate all quality concerns to ensure our products perform to the highest standards

If the product does not perform as described on this datasheet, we will offer a refund or replacement. For full details of the Abpromise, please visit <https://www.abcam.co.jp/abpromise> or contact our technical team.

### **Terms and conditions**

---

- Guarantee only valid for products bought direct from Abcam or one of our authorized distributors