

Anti-CD300a antibody [EPR5226] ab124810

リコンビナント RabMAb

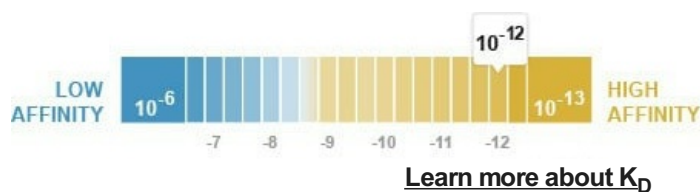
画像数 3

製品の概要

製品名	Anti-CD300a antibody [EPR5226]
製品の詳細	Rabbit monoclonal [EPR5226] to CD300a
由来種	Rabbit
アプリケーション	適用あり: WB 適用なし: ICC/IF, IHC-P or IP
種交差性	交差種: Human
免疫原	Synthetic peptide within Human CD300a aa 50-150. The exact sequence is proprietary.
ポジティブ・コントロール	Human lymph node and spleen lysates.
特記事項	<p>This product is a recombinant monoclonal antibody, which offers several advantages including:</p> <ul style="list-style-type: none"> - High batch-to-batch consistency and reproducibility - Improved sensitivity and specificity - Long-term security of supply - Animal-free production <p>For more information see here.</p> <p>Our RabMAb[®] technology is a patented hybridoma-based technology for making rabbit monoclonal antibodies. For details on our patents, please refer to RabMAb[®] patents.</p> <p>Mouse, Rat: We have preliminary internal testing data to indicate this antibody may not react with these species. Please contact us for more information.</p>

製品の特性

製品の状態	Liquid
保存方法	Shipped at 4°C. Store at -20°C. Stable for 12 months at -20°C.
解離定数 (K _D 値)	K _D = 3.90 x 10 ⁻¹² M



バッファー	pH: 7.20 Preservative: 0.01% Sodium azide Constituents: 0.31% Sodium citrate, 0.175% Sodium chloride, 0.0172% EDTA, 59% PBS, 40% Glycerol (glycerin, glycerine), 0.05% BSA
精製度	Protein A purified
ポリ/モノ	モノクローナル
クローン名	EPR5226
アイソタイプ	IgG

アプリケーション

The Abpromise guarantee **Abpromise保証は、** 次のテスト済みアプリケーションにおけるab124810の使用に適用されます
アプリケーションノートには、推奨の開始希釈率がありますが、適切な希釈率につきましてはご検討ください。

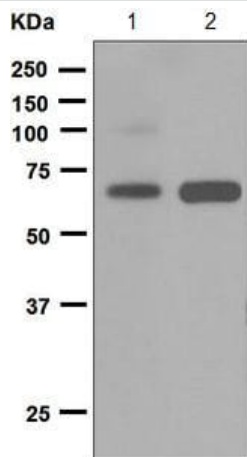
アプリケーション	Abreviews	特記事項
WB		1/1000 - 1/10000. Detects a band of approximately 60 kDa (predicted molecular weight: 33 kDa).

追加情報 Is unsuitable for ICC/IF, IHC-P or IP.

ターゲット情報

機能	Inhibitory receptor which may contribute to the down-regulation of cytolytic activity in natural killer (NK) cells, and to the down-regulation of mast cell degranulation.
組織特異性	Expressed not only by natural killer (NK) cells but also by T-cell subsets, B-cells, dendritic cells, mast cells, granulocytes and monocytes.
配列類似性	Belongs to the CD300 family. Contains 1 Ig-like V-type (immunoglobulin-like) domain.
翻訳後修飾	Phosphorylated on tyrosine.
細胞内局在	Cell membrane.

画像



Western blot - Anti-CD300a antibody [EPR5226]
(ab124810)

All lanes : Anti-CD300a antibody [EPR5226] (ab124810) at 1/1000 dilution

Lane 1 : Human lymph node lysates

Lane 2 : Human spleen lysates

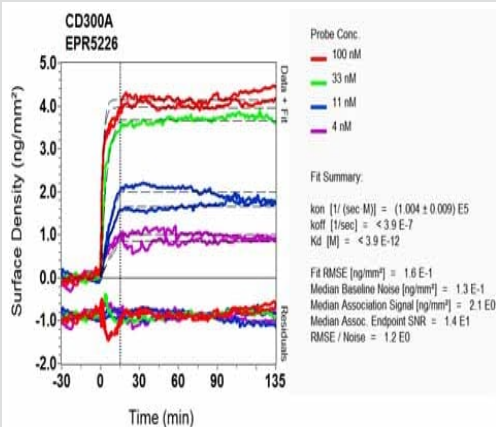
Lysates/proteins at 10 µg per lane.

Secondary

All lanes : Goat anti-Rabbit HRP at 1/2000 dilution

Predicted band size: 33 kDa

Observed band size: 60 kDa



O1-RD Scanning - Anti-CD300a antibody [EPR5226]
(ab124810)

Equilibrium disassociation constant (K_D)

Learn more about K_D

[Click here to learn more about \$K_D\$](#)

Why choose a recombinant antibody?



Research with confidence
Consistent and reproducible results



Long-term and scalable supply
Recombinant technology



Success from the first experiment
Confirmed specificity



Ethical standards compliant
Animal-free production

Anti-CD300a antibody [EPR5226] (ab124810)

Please note: All products are "FOR RESEARCH USE ONLY. NOT FOR USE IN DIAGNOSTIC PROCEDURES"

Our Abpromise to you: Quality guaranteed and expert technical support

- Replacement or refund for products not performing as stated on the datasheet
- Valid for 12 months from date of delivery
- Response to your inquiry within 24 hours
- We provide support in Chinese, English, French, German, Japanese and Spanish
- Extensive multi-media technical resources to help you
- We investigate all quality concerns to ensure our products perform to the highest standards

If the product does not perform as described on this datasheet, we will offer a refund or replacement. For full details of the Abpromise, please visit <https://www.abcam.co.jp/abpromise> or contact our technical team.

Terms and conditions

- Guarantee only valid for products bought direct from Abcam or one of our authorized distributors