

Anti-CD3 antibody [KT3] ab33429

★★★★★ [3 Abreviews](#) [6 References](#) [画像数 1](#)

製品の概要

製品名	Anti-CD3 antibody [KT3]
製品の詳細	Rat monoclonal [KT3] to CD3
由来種	Rat
アプリケーション	適用あり: IHC-Fr, ICC/IF, Flow Cyt 適用なし: IHC-P
種交差性	交差種: Mouse
免疫原	Tissue, cells or virus corresponding to Mouse CD3. mature T cells (Mouse)
特記事項	<p>ab33429 may be used to trigger proliferation and cytotoxicity of CD3 positive cells.</p> <p>The Life Science industry has been in the grips of a reproducibility crisis for a number of years. Abcam is leading the way in addressing this with our range of recombinant monoclonal antibodies and knockout edited cell lines for gold-standard validation. Please check that this product meets your needs before purchasing.</p> <p>If you have any questions, special requirements or concerns, please send us an inquiry and/or contact our Support team ahead of purchase. Recommended alternatives for this product can be found below, along with publications, customer reviews and Q&As</p>

製品の特性

製品の状態	Liquid
保存方法	Shipped at 4°C. Store at +4°C short term (1-2 weeks). Upon delivery aliquot. Store at -20°C long term.
バッファー	pH: 7.40 Preservative: 0.09% Sodium azide Constituent: PBS
精製度	Protein G purified
特記事項(精製)	Purified from tissue culture supernatant.
一次抗体 備考	ab33429 may be used to trigger proliferation and cytotoxicity of CD3 positive cells.
ポリ/モノ	モノクローナル
クローン名	KT3

ミエローマ NS0
 アイソタイプ IgG2a

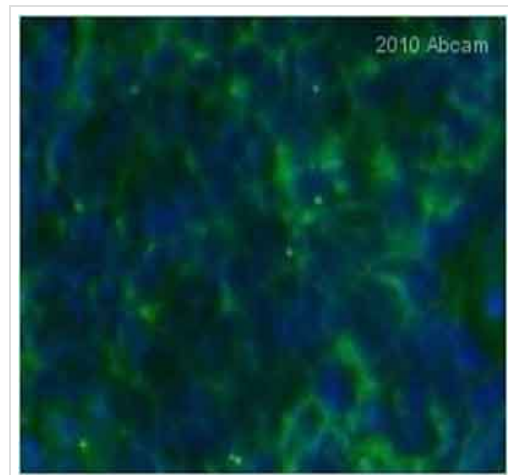
アプリケーション

The Abpromise guarantee **Abpromise保証は、** 次のテスト済みアプリケーションにおけるab33429の使用に適用されず
 アプリケーションノートには、推奨の開始希釈率がありますが、適切な希釈率につきましてはご検討ください。

アプリケーション	Abreviews	特記事項
IHC-Fr	★★★★☆ (1)	Use at an assay dependent concentration.
ICC/IF	★★★★★ (1)	Use at an assay dependent concentration.
Flow Cyt		Use at an assay dependent concentration. ab18450 - Rat monoclonal IgG2a, is suitable for use as an isotype control with this antibody.

追加情報 Is unsuitable for IHC-P.

画像



ab33429 staining CD3 in mouse spleen tissue by Immunohistochemistry (frozen sections). Tissue was fixed with acetone and then blocked with 5% serum for 1 hour at 25°C followed by incubation with the primary antibody at a 1/250 dilution for 12 hours at 4°C. A goat anti-rat IgG conjugated to Alexa Fluor®488 was used as secondary antibody at a 1/250 dilution.

Immunohistochemistry (Frozen sections) - Anti-CD3 antibody [KT3] (ab33429)
 Image courtesy of an anonymous Abreview

Please note: All products are "FOR RESEARCH USE ONLY. NOT FOR USE IN DIAGNOSTIC PROCEDURES"

Our Abpromise to you: Quality guaranteed and expert technical support

- Replacement or refund for products not performing as stated on the datasheet
- Valid for 12 months from date of delivery
- Response to your inquiry within 24 hours

- We provide support in Chinese, English, French, German, Japanese and Spanish
- Extensive multi-media technical resources to help you
- We investigate all quality concerns to ensure our products perform to the highest standards

If the product does not perform as described on this datasheet, we will offer a refund or replacement. For full details of the Abpromise, please visit <https://www.abcam.co.jp/abpromise> or contact our technical team.

Terms and conditions

- Guarantee only valid for products bought direct from Abcam or one of our authorized distributors