

Anti-CD23 antibody [SP23] ab16702

リコンビナント **RabMAb**

3 References **画像数 3**

製品の概要

製品名	Anti-CD23 antibody [SP23]
製品の詳細	Rabbit monoclonal [SP23] to CD23
由来種	Rabbit
アプリケーション	適用あり: WB, IHC-P, Flow Cyt
種交差性	交差種: Human
免疫原	Recombinant fragment within Human CD23 aa 1-250. The exact sequence is proprietary. Database link: P06734
ポジティブ・コントロール	IHC-P: Human tonsil. Flow Cyt: Jurkat cell lysate. WB: Raji cell lysate.
特記事項	This product is a recombinant monoclonal antibody, which offers several advantages including: <ul style="list-style-type: none"> - High batch-to-batch consistency and reproducibility - Improved sensitivity and specificity - Long-term security of supply - Animal-free production For more information see here . This product is FOR RESEARCH USE ONLY. For commercial use, please contact partnerships@abcam.com.

製品の特性

製品の状態	Liquid
保存方法	Shipped at 4°C. Upon delivery aliquot and store at -20°C. Avoid freeze / thaw cycles.
バッファー	pH: 7.20 Preservative: 0.1% Sodium azide Constituents: 1% BSA, PBS
精製度	Protein A purified
ポリ/モノ	モノクローナル
クローン名	SP23
アイソタイプ	IgG

アプリケーション

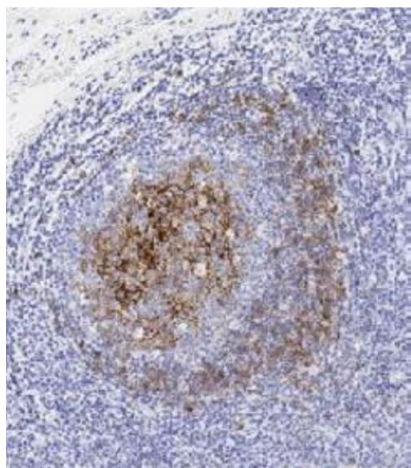
The Abpromise guarantee Abpromise保証は、次のテスト済みアプリケーションにおけるab16702の使用に適用されます
アプリケーションノートには、推奨の開始希釈率がありますが、適切な希釈率につきましてはご検討ください。

アプリケーション	Abreviews	特記事項
WB		Use at an assay dependent concentration.
IHC-P		1/100. Staining of formalin fixed tissues requires boiling tissue sections in 10mM citrate buffer, pH 6.0 for 10 minutes followed by cooling at room temperature for 20 minutes.
Flow Cyt		Use at an assay dependent concentration. ab172730 - Rabbit monoclonal IgG, is suitable for use as an isotype control with this antibody.

ターゲット情報

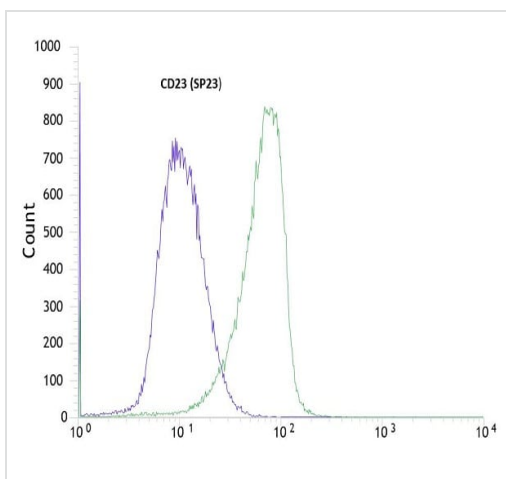
機能	This receptor has essential roles in the regulation of IgE production and in the differentiation of B-cells (it is a B-cell-specific antigen).
配列類似性	Contains 1 C-type lectin domain.
翻訳後修飾	N- and O-glycosylated.
細胞内局在	Cell membrane. Secreted. Also exists as a soluble excreted form.

画像



Immunohistochemical analysis of paraffin-embedded Human tonsil labeling CD23 with ab16702 at 1/100 (76 µg/ml). The section was pre-treated using heat mediated antigen retrieval with sodium citrate buffer (pH 6.0, epitope retrieval solution 1) for 20 mins. The section was then incubated with ab16702 for 15 mins at room temperature and detected using an HRP conjugated compact polymer system. The immunostaining was performed on a Leica Biosystems BOND® RX instrument. DAB was used as the chromogen. Counterstained with Hematoxylin and mounted with DPX.

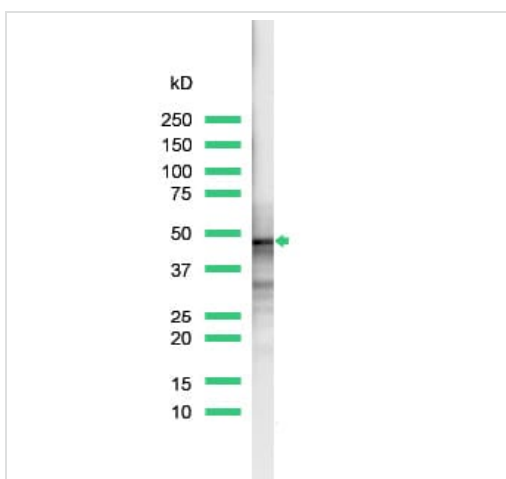
Immunohistochemistry (Formalin/PFA-fixed paraffin-embedded sections) - Anti-CD23 antibody [SP23] (ab16702)



Flow Cytometry - Anti-CD23 antibody [SP23]
(ab16702)

This image was generated using a previous batch manufactured using hybridoma production method.

Flow cytometric analysis of rabbit anti-CD23 (SP23) antibody ab16702 (1/100) in Jurkats (green) compared to negative control of rabbit IgG (blue).



Western blot - Anti-CD23 antibody [SP23] (ab16702)

Anti-CD23 antibody [SP23] (ab16702) at 1/25 dilution + lysate prepared from Raji cells

Observed band size: 45 kDa

This image was generated using a previous batch manufactured using hybridoma production method.

Please note: All products are "FOR RESEARCH USE ONLY. NOT FOR USE IN DIAGNOSTIC PROCEDURES"

Our Abpromise to you: Quality guaranteed and expert technical support

- Replacement or refund for products not performing as stated on the datasheet
- Valid for 12 months from date of delivery
- Response to your inquiry within 24 hours
- We provide support in Chinese, English, French, German, Japanese and Spanish
- Extensive multi-media technical resources to help you
- We investigate all quality concerns to ensure our products perform to the highest standards

If the product does not perform as described on this datasheet, we will offer a refund or replacement. For full details of the Abpromise, please visit <https://www.abcam.co.jp/abpromise> or contact our technical team.

Terms and conditions

- Guarantee only valid for products bought direct from Abcam or one of our authorized distributors