

Anti-CD229 antibody ab113285

画像数 3

製品の概要

製品名	Anti-CD229 antibody
製品の詳細	Rabbit polyclonal to CD229
由来種	Rabbit
特異性	At least three isoforms are known to exist. ab113285 is predicted to not cross-react with other family members.
アプリケーション	適用あり: ICC/IF, WB, ICC
種交差性	交差種: Human
免疫原	An 18 amino acid peptide near the C terminus of Human CD229.
ポジティブ・コントロール	293 cell lysate.
特記事項	<p>The Life Science industry has been in the grips of a reproducibility crisis for a number of years. Abcam is leading the way in addressing this with our range of recombinant monoclonal antibodies and knockout edited cell lines for gold-standard validation. Please check that this product meets your needs before purchasing.</p> <p>If you have any questions, special requirements or concerns, please send us an inquiry and/or contact our Support team ahead of purchase. Recommended alternatives for this product can be found below, along with publications, customer reviews and Q&As</p>

製品の特性

製品の状態	Liquid
保存方法	Shipped at 4°C. Store at 4°C (stable for up to 12 months).
バッファー	<p>pH: 7.2</p> <p>Preservative: 0.02% Sodium azide</p> <p>Constituent: 99% PBS</p>
精製度	Immunogen affinity purified
特記事項(精製)	ab113285 is purified by affinity chromatography via a peptide column.
ポリ/モノ	ポリクローナル
アイソタイプ	IgG

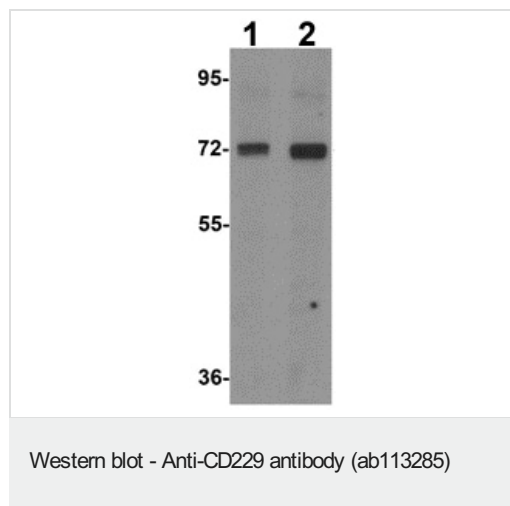
The Abpromise guarantee **Abpromise保証は、** 次のテスト済みアプリケーションにおけるab113285の使用に適用されます
アプリケーションノートには、推奨の開始希釈率がありますが、適切な希釈率につきましてはご検討ください。

アプリケーション	Abreviews	特記事項
ICC/IF		Use a concentration of 20 µg/ml.
WB		Use a concentration of 1 - 2 µg/ml. Predicted molecular weight: 72 kDa.
ICC		1/10.

ターゲット情報

機能	May participate in adhesion reactions between T lymphocytes and accessory cells by homophilic interaction.
配列類似性	Contains 2 Ig-like C2-type (immunoglobulin-like) domains. Contains 2 Ig-like V-type (immunoglobulin-like) domains.
細胞内局在	Membrane.

画像



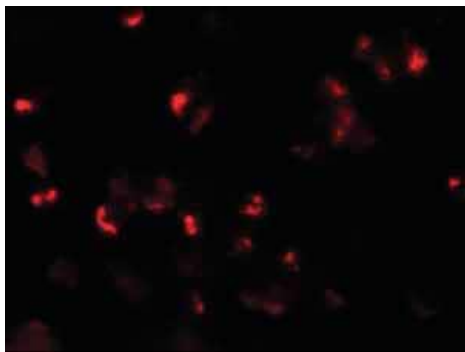
Lane 1 : Anti-CD229 antibody (ab113285) at 1 µg/ml

Lane 2 : Anti-CD229 antibody (ab113285) at 2 µg/ml

All lanes : 293 cell lysate

Lysates/proteins at 15 µg/ml per lane.

Predicted band size: 72 kDa



Immunofluorescence of CD229 in 293 cells with ab113285 at 20 ug/mL.

Immunocytochemistry/ Immunofluorescence - Anti-CD229 antibody (ab113285)



Immunocytochemical analysis of 293 cells, staining CD229 with ab113285 at 10 ug/mL.

Immunocytochemistry - Anti-CD229 antibody (ab113285)

Please note: All products are "FOR RESEARCH USE ONLY. NOT FOR USE IN DIAGNOSTIC PROCEDURES"

Our Abpromise to you: Quality guaranteed and expert technical support

- Replacement or refund for products not performing as stated on the datasheet
- Valid for 12 months from date of delivery
- Response to your inquiry within 24 hours
- We provide support in Chinese, English, French, German, Japanese and Spanish
- Extensive multi-media technical resources to help you
- We investigate all quality concerns to ensure our products perform to the highest standards

If the product does not perform as described on this datasheet, we will offer a refund or replacement. For full details of the Abpromise, please visit <https://www.abcam.co.jp/abpromise> or contact our technical team.

Terms and conditions

- Guarantee only valid for products bought direct from Abcam or one of our authorized distributors