

### Anti-CD209 antibody [ER-TR9] ab37220

★★★★★ [2 Abreviews](#) [4 References](#) [画像数 1](#)

#### 製品の概要

製品名	Anti-CD209 antibody [ER-TR9]
製品の詳細	Rat monoclonal [ER-TR9] to CD209
由来種	Rat
アプリケーション	<b>適用あり:</b> Flow Cyt, IHC-Fr, Blocking
種交差性	<b>交差種:</b> Mouse
免疫原	Tissue, cells or virus corresponding to CD209. Mouse thymic stromal cells
ポジティブ・コントロール	Peritoneal macrophages
特記事項	<p>The Life Science industry has been in the grips of a reproducibility crisis for a number of years. Abcam is leading the way in addressing this with our range of recombinant monoclonal antibodies and knockout edited cell lines for gold-standard validation. Please check that this product meets your needs before purchasing.</p> <p>If you have any questions, special requirements or concerns, please send us an inquiry and/or contact our Support team ahead of purchase. Recommended alternatives for this product can be found below, along with publications, customer reviews and Q&amp;As</p>

#### 製品の特性

製品の状態	Liquid
保存方法	Shipped at 4°C. Upon delivery aliquot and store at -20°C. Avoid freeze / thaw cycles.
バッファー	Preservative: 0.02% Sodium azide Constituent: Tissue culture supernatant
精製度	Tissue culture supernatant
ポリ/モノ	モノクローナル
クローン名	ER-TR9
アイソタイプ	IgM

#### アプリケーション

The Abpromise guarantee

Abpromise保証は、次のテスト済みアプリケーションにおけるab37220の使用に適用されます

アプリケーションノートには、推奨の開始希釈率がありますが、適切な希釈率につきましてはご確認ください。

アプリケーション	Abreviews	特記事項
Flow Cyt		Use 2µg for 10 <sup>6</sup> cells. <b>ab35768</b> - Rat monoclonal IgM, is suitable for use as an isotype control with this antibody.
IHC-Fr	★★★★★ (2)	Use at an assay dependent concentration.
Blocking		Use at an assay dependent concentration. Dilutions have to be made according to the amounts of SIGN-R1 to be inactivated.

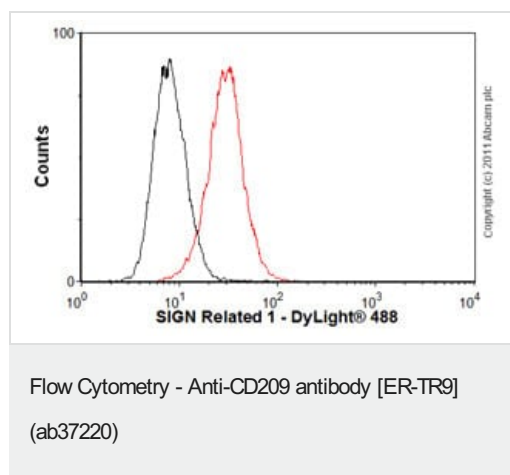
## ターゲット情報

**関連性**

SIGN R1 is a specific marker for the identification of macrophage subpopulations present in the marginal zone of spleen (the so-called marginal zone macrophages (MZM)), in the lymph node medulla, and in some strains, in the peritoneal cavity. MZM of the spleen are involved in the clearance of polysaccharides. Mouse SIGN R1 is a C type lectin, like DC SIGN which is expressed on Human dendritic cells (DCs). However, Mmouse SIGN R1 itself is not expressed on DCs. SIGN R1 exists in an aggregated form, resistant to dissociation into monomers upon boiling in SDS under reducing conditions. SIGN R1 mediates the uptake of encapsulated organisms and may be an important mediator for the uptake of microbes in both spleen and lymph node, particularly through the recognition of microbial polysaccharides.

**細胞内局在** Single-pass type II membrane protein

## 画像



Overlay histogram showing SP0/2 cells stained with ab37220 (red line). The cells were fixed with 4% paraformaldehyde (10min) and incubated in 1x PBS / 10% normal goat serum / 0.3M glycine to block non-specific protein-protein interactions. The cells were then incubated with the antibody (ab37220, 2µg/1x10<sup>6</sup> cells) for 30 min at 22°C. The secondary antibody used was DyLight® 488 goat anti-rat IgG (H+L) (**ab98386**) at 1/500 dilution for 30 min at 22°C. Isotype control antibody (black line) was rat IgM, kappa monoclonal [RTK2118] (**ab35768**, 2µg/1x10<sup>6</sup> cells) used under the same conditions. Acquisition of >5,000 events was performed. This antibody gave a positive signal in SP0/2 cells fixed with 80% methanol (5 min) used under the same conditions. Please note that Abcam do not have any data for use of this antibody on non-fixed cells. We welcome any customer feedback.

**Please note:** All products are "FOR RESEARCH USE ONLY. NOT FOR USE IN DIAGNOSTIC PROCEDURES"

### **Our Abpromise to you: Quality guaranteed and expert technical support**

---

- Replacement or refund for products not performing as stated on the datasheet
- Valid for 12 months from date of delivery
- Response to your inquiry within 24 hours
  
- We provide support in Chinese, English, French, German, Japanese and Spanish
- Extensive multi-media technical resources to help you
- We investigate all quality concerns to ensure our products perform to the highest standards

If the product does not perform as described on this datasheet, we will offer a refund or replacement. For full details of the Abpromise, please visit <https://www.abcam.co.jp/abpromise> or contact our technical team.

### **Terms and conditions**

---

- Guarantee only valid for products bought direct from Abcam or one of our authorized distributors