

### Anti-CD20 antibody [MEM-97] ab8237

[3 References](#) [画像数 4](#)

#### 製品の概要

製品名	Anti-CD20 antibody [MEM-97]
製品の詳細	Mouse monoclonal [MEM-97] to CD20
由来種	Mouse
アプリケーション	<b>適用あり:</b> Flow Cyt, IP
種交差性	<b>交差種:</b> Dog, Human, Pig
免疫原	Tissue, cells or virus corresponding to Human CD20. Burkitt's lymphoma cell line Raji.
特記事項	<p>This product was changed from ascites to tissue culture supernatant. Please note that the dilutions may need to be adjusted accordingly. If you have any questions, please do not hesitate to contact our scientific support team.</p> <p>The Life Science industry has been in the grips of a reproducibility crisis for a number of years. Abcam is leading the way in addressing this with our range of recombinant monoclonal antibodies and knockout edited cell lines for gold-standard validation. Please check that this product meets your needs before purchasing.</p> <p>If you have any questions, special requirements or concerns, please send us an inquiry and/or contact our Support team ahead of purchase. Recommended alternatives for this product can be found below, along with publications, customer reviews and Q&amp;As</p>

#### 製品の特性

製品の状態	Liquid
保存方法	Shipped at 4°C. Store at +4°C short term (1-2 weeks). Upon delivery aliquot. Store at -20°C or -80°C. Avoid freeze / thaw cycle.
バッファー	pH: 7.40 Preservative: 0.097% Sodium azide Constituent: PBS
精製度	Protein A purified
特記事項(精製)	Purified from TCS
ポリ/モノ	モノクローナル
クローン名	MEM-97
アイソタイプ	IgG1

## アプリケーション

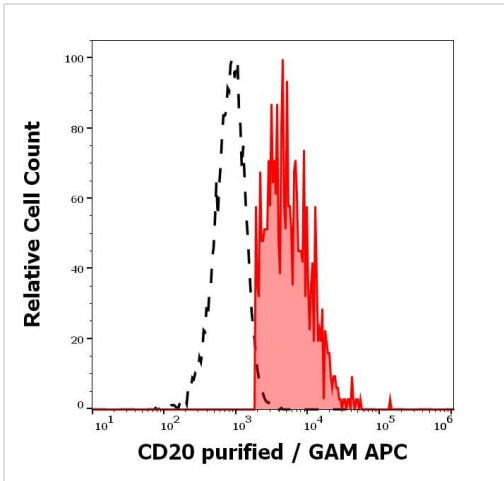
**The Abpromise guarantee** **Abpromise保証は、次のテスト済みアプリケーションにおけるab8237の使用に適用されます**  
アプリケーションノートには、推奨の開始希釈率がありますが、適切な希釈率につきましてはご確認ください。

アプリケーション	Abreviews	特記事項
Flow Cyt		Use a concentration of 1 - 5 µg/ml. <b>ab170190</b> - Mouse monoclonal IgG1, is suitable for use as an isotype control with this antibody.
IP		Use at an assay dependent concentration.

## ターゲット情報

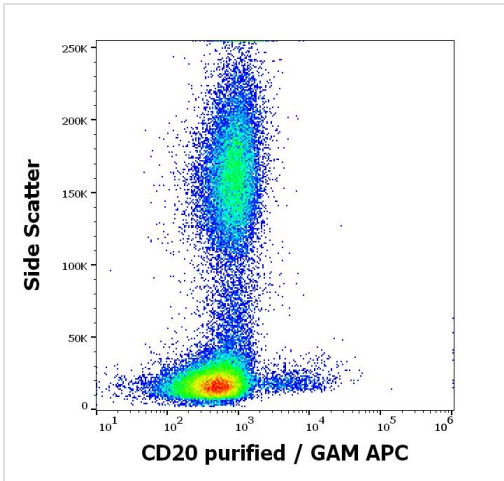
機能	This protein may be involved in the regulation of B-cell activation and proliferation.
組織特異性	Expressed on B-cells.
関連疾患	Defects in MS4A1 are the cause of immunodeficiency common variable type 5 (CVID5) [MIM:613495]; also called antibody deficiency due to CD20 defect. CVID5 is a primary immunodeficiency characterized by antibody deficiency, hypogammaglobulinemia, recurrent bacterial infections and an inability to mount an antibody response to antigen. The defect results from a failure of B-cell differentiation and impaired secretion of immunoglobulins; the numbers of circulating B cells is usually in the normal range, but can be low.
配列類似性	Belongs to the MS4A family.
翻訳後修飾	Phosphorylated. Might be functionally regulated by protein kinase(s).
細胞内局在	Membrane.

## 画像



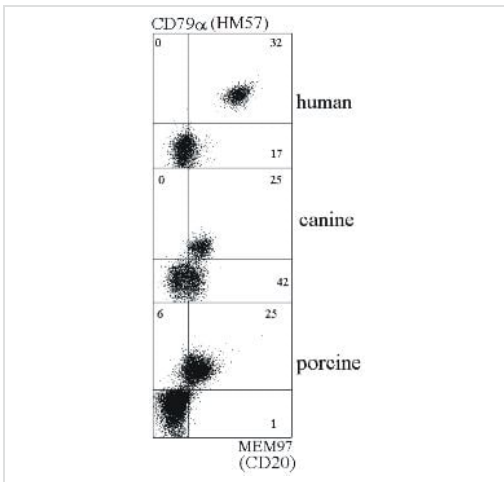
Separation of human CD20 positive lymphocytes (red-filled) from neutrophil granulocytes (black-dashed) in flow cytometry analysis (surface staining) of human peripheral whole blood stained using ab8237 (concentration in sample 1.6 µg/ml) GAM APC.

Flow Cytometry - Anti-CD20 antibody [MEM-97] (ab8237)



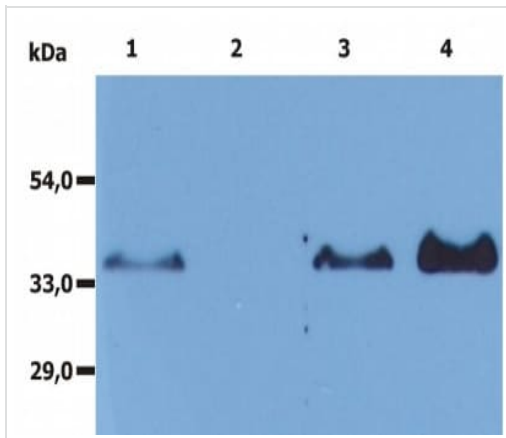
Flow cytometry surface staining pattern of human peripheral whole blood stained using ab8237 (concentration in sample 1.6 µg/ml) GAM APC.

Flow Cytometry - Anti-CD20 antibody [MEM-97] (ab8237)



Double Immunostaining of CD20 and CD79a in human, canine and porcine B lymphocytes using ab8237 and **ab76908** by Flow Cytometry.

Flow Cytometry - Anti-CD20 antibody [MEM-97] (ab8237)



Immunoprecipitation - Anti-CD20 antibody [MEM-97]  
(ab8237)

Immunoprecipitation of human CD20 from the whole cell lysate of RAJI human Burkitt lymphoma cell line. Western blot was immunostained with anti-CD20 rabbit polyclonal antibody. Lane 1: original lysate of RAJI cells Lane 2: immunoprecipitate by Isotypic mouse IgG1 control Lane 3: original lysate of RAJI cells Lane 4: immunoprecipitate by anti-CD20 (MEM-97, ab 8237)

**Please note:** All products are "FOR RESEARCH USE ONLY. NOT FOR USE IN DIAGNOSTIC PROCEDURES"

### Our Abpromise to you: Quality guaranteed and expert technical support

- Replacement or refund for products not performing as stated on the datasheet
- Valid for 12 months from date of delivery
- Response to your inquiry within 24 hours
- We provide support in Chinese, English, French, German, Japanese and Spanish
- Extensive multi-media technical resources to help you
- We investigate all quality concerns to ensure our products perform to the highest standards

If the product does not perform as described on this datasheet, we will offer a refund or replacement. For full details of the Abpromise, please visit <https://www.abcam.co.jp/abpromise> or contact our technical team.

### Terms and conditions

- Guarantee only valid for products bought direct from Abcam or one of our authorized distributors