

Anti-CD20 antibody [L26] ab9475

★★★★★ [7 Abreviews](#) [61 References](#) [画像数 3](#)

製品の概要

製品名	Anti-CD20 antibody [L26]
製品の詳細	Mouse monoclonal [L26] to CD20
由来種	Mouse
アプリケーション	適用あり: IHC-P, Flow Cyt
種交差性	交差種: Human
免疫原	Tissue, cells or virus corresponding to Human CD20. Human tonsil B cells.
ポジティブ・コントロール	Tonsil.
特記事項	<p>The Life Science industry has been in the grips of a reproducibility crisis for a number of years. Abcam is leading the way in addressing this with our range of recombinant monoclonal antibodies and knockout edited cell lines for gold-standard validation. Please check that this product meets your needs before purchasing.</p> <p>If you have any questions, special requirements or concerns, please send us an inquiry and/or contact our Support team ahead of purchase. Recommended alternatives for this product can be found below, along with publications, customer reviews and Q&As</p>

製品の特性

製品の状態	Liquid
保存方法	Shipped at 4°C. Store at +4°C short term (1-2 weeks). Store at -20°C or -80°C. Avoid freeze / thaw cycle.
バッファー	<p>pH: 7.30</p> <p>Preservative: 0.1% Sodium azide</p> <p>Contains PBS, BSA, Tween</p>
精製度	Tissue culture supernatant
ポリ/モノ	モノクローナル
クローン名	L26
ミエローマ	unknown
アイソタイプ	IgG2a
軽鎖の種類	kappa

アプリケーション

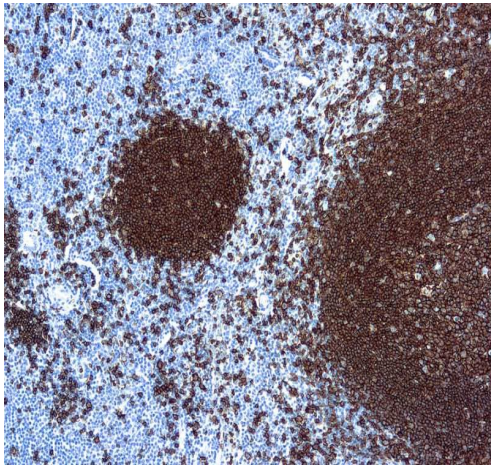
The Abpromise guarantee Abpromise保証は、次のテスト済みアプリケーションにおけるab9475の使用に適用されます
アプリケーションノートには、推奨の開始希釈率がありますが、適切な希釈率につきましてはご検討ください。

アプリケーション	Abreviews	特記事項
IHC-P	★★★★★ (4)	1/50 - 1/100. Perform heat mediated antigen retrieval with citrate buffer pH 6 before commencing with IHC staining protocol.
Flow Cyt		Use 0.1µg for 10 ⁶ cells. ab170191 - Mouse monoclonal IgG2a, is suitable for use as an isotype control with this antibody.

ターゲット情報

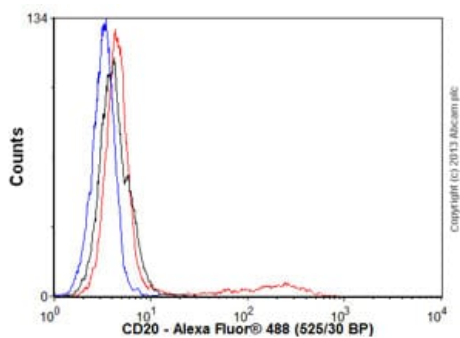
機能	This protein may be involved in the regulation of B-cell activation and proliferation.
組織特異性	Expressed on B-cells.
関連疾患	Defects in MS4A1 are the cause of immunodeficiency common variable type 5 (CVID5) [MIM:613495]; also called antibody deficiency due to CD20 defect. CVID5 is a primary immunodeficiency characterized by antibody deficiency, hypogammaglobulinemia, recurrent bacterial infections and an inability to mount an antibody response to antigen. The defect results from a failure of B-cell differentiation and impaired secretion of immunoglobulins; the numbers of circulating B cells is usually in the normal range, but can be low.
配列類似性	Belongs to the MS4A family.
翻訳後修飾	Phosphorylated. Might be functionally regulated by protein kinase(s).
細胞内局在	Membrane.

画像



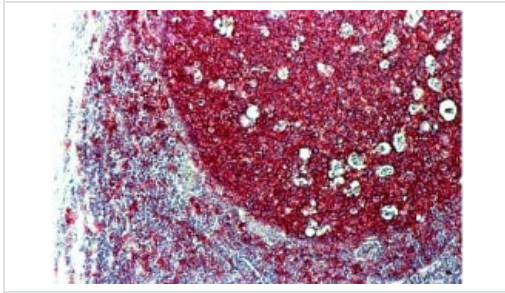
Immunohistochemistry (Formalin/PFA-fixed paraffin-embedded sections) - Anti-CD20 antibody [L26] (ab9475)

Formalin-fixed, paraffin-embedded human tonsil tissue stained for CD20 using ab9475 at 1/50 dilution in immunohistochemical analysis. Antigen retrieval with citrate buffer pH 6.0.



Flow Cytometry - Anti-CD20 antibody [L26] (ab9475)

Human peripheral blood lymphocytes stained with ab9475 (red line). Human whole blood was processed using a modified protocol based on Chow *et al*, 2005 (PMID: 16080188). In brief, human whole blood was fixed in 4% formaldehyde (methanol-free) for 10 min at 22°C. Red blood cells were then lysed by the addition of Triton X-100 (final concentration - 0.1%) for 15 min at 37°C. For experimentation, cells were treated with 50% methanol (-20°C) for 15 min at 4°C. Cells were then incubated with the antibody (ab9475, 0.1µg/1x10⁶ cells) for 30 min at 4°C. The secondary antibody used was Alexa Fluor® 488 goat anti-mouse IgG (H&L) (**ab150113**) at 1/2000 dilution for 30 min at 4°C. Isotype control antibody (black line) was mouse IgG2a [ICIGG2A] (**ab91361**, 0.1µg/1x10⁶ cells) used under the same conditions. Unlabelled sample (blue line) was also used as a control. Acquisition of >30,000 total events were collected using a 20mW Argon ion laser (488nm) and 525/30 bandpass filter. Gating strategy - peripheral blood lymphocytes.



Immunohistochemistry (Formalin/PFA-fixed paraffin-embedded sections) - Anti-CD20 antibody [L26] (ab9475)

ab9475 - immunohistochemistry

Formalin fixed paraffin embedded human tonsil stained with CD20, B cell using ABC and Fast Red chromagen.

Please note: All products are "FOR RESEARCH USE ONLY. NOT FOR USE IN DIAGNOSTIC PROCEDURES"

Our Abpromise to you: Quality guaranteed and expert technical support

- Replacement or refund for products not performing as stated on the datasheet
- Valid for 12 months from date of delivery
- Response to your inquiry within 24 hours
- We provide support in Chinese, English, French, German, Japanese and Spanish
- Extensive multi-media technical resources to help you
- We investigate all quality concerns to ensure our products perform to the highest standards

If the product does not perform as described on this datasheet, we will offer a refund or replacement. For full details of the Abpromise, please visit <https://www.abcam.co.jp/abpromise> or contact our technical team.

Terms and conditions

- Guarantee only valid for products bought direct from Abcam or one of our authorized distributors