

Anti-CD1d antibody [WTH1] ab119846

1 References [画像数 1](#)

製品の概要

製品名	Anti-CD1d antibody [WTH1]
製品の詳細	Mouse monoclonal [WTH1] to CD1d
由来種	Mouse
特異性	ab119846 cross reacts weakly with Mouse tissue in IHC and WB, but reacts strongly with both Rat and Mouse antigens in FC and IP.
アプリケーション	適用あり: IHC-Fr
種交差性	交差種: Rat
免疫原	Tissue, cells or virus corresponding to Rat CD1d. Rat CD1d-transduced M12.4.1.C3 cells.
ポジティブ・コントロール	LEW Rat spleen tissue.
特記事項	<p>The Life Science industry has been in the grips of a reproducibility crisis for a number of years. Abcam is leading the way in addressing this with our range of recombinant monoclonal antibodies and knockout edited cell lines for gold-standard validation. Please check that this product meets your needs before purchasing.</p> <p>If you have any questions, special requirements or concerns, please send us an inquiry and/or contact our Support team ahead of purchase. Recommended alternatives for this product can be found below, along with publications, customer reviews and Q&As</p>

製品の特性

製品の状態	Liquid
保存方法	Shipped at 4°C. Store at -20°C or -80°C. Avoid freeze / thaw cycle. Store undiluted.
バッファー	Preservative: 0.02% Sodium azide Constituent: 99% PBS
精製度	Immunogen affinity purified
特記事項(精製)	ab119846 is purified.
ポリ/モノ	モノクローナル
クローン名	WTH1
アイソタイプ	IgG2a

アプリケーション

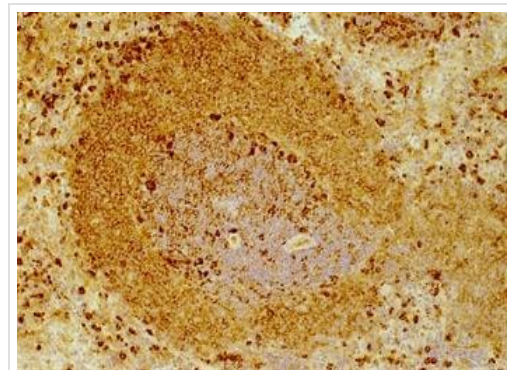
The Abpromise guarantee Abpromise保証は、次のテスト済みアプリケーションにおけるab119846の使用に適用されます
アプリケーションノートには、推奨の開始希釈率がありますが、適切な希釈率につきましてはご確認ください。

アプリケーション	Abreviews	特記事項
IHC-Fr		Use at an assay dependent concentration.

ターゲット情報

機能	Antigen-presenting protein that binds self and non-self glycolipids and presents them to T-cell receptors on natural killer T-cells.
組織特異性	Expressed on cortical thymocytes, on certain T-cell leukemias, and in various other tissues.
配列類似性	Contains 1 Ig-like (immunoglobulin-like) domain.
細胞内局在	Cell membrane. Endosome membrane. Lysosome membrane. Subject to intracellular trafficking between the cell membrane, endosomes and lysosomes.

画像



Immunoperoxidase staining of LEW Rat spleen follicle using ab119846.

Immunohistochemistry (Frozen sections) - Anti-CD1d antibody [WTH1] (ab119846)

Please note: All products are "FOR RESEARCH USE ONLY. NOT FOR USE IN DIAGNOSTIC PROCEDURES"

Our Abpromise to you: Quality guaranteed and expert technical support

- Replacement or refund for products not performing as stated on the datasheet
- Valid for 12 months from date of delivery
- Response to your inquiry within 24 hours
- We provide support in Chinese, English, French, German, Japanese and Spanish
- Extensive multi-media technical resources to help you
- We investigate all quality concerns to ensure our products perform to the highest standards

If the product does not perform as described on this datasheet, we will offer a refund or replacement. For full details of the Abpromise, please visit <https://www.abcam.co.jp/abpromise> or contact our technical team.

Terms and conditions

- Guarantee only valid for products bought direct from Abcam or one of our authorized distributors