

Anti-CD16+CD32 antibody [93] - BSA and Azide free ab25235

14 References **画像数 2**

製品の概要

製品名	Anti-CD16+CD32 antibody [93] - BSA and Azide free
製品の詳細	Rat monoclonal [93] to CD16+CD32 - BSA and Azide free
由来種	Rat
アプリケーション	適用あり: Flow Cyt, Blocking, ICC/IF
種交差性	交差種: Mouse, Human
免疫原	Tissue, cells or virus. Sorted Mouse pre-B cells
エピトープ	ab25235 reacts with a conformational epitope formed by CD16 Fc gamma II and CD32 Fc gamma III receptors.
ポジティブ・コントロール	ICC: HeLa cells Flow Cyt: C57BL/6 splenocytes.
特記事項	<p>This product was changed from ascites to tissue culture supernatant on 02/08/2019. Lot numbers higher than GR3269503 are from tissue culture supernatant. Please note that the dilutions may need to be adjusted accordingly. If you have any questions, please do not hesitate to contact our scientific support team.</p> <p>This antibody clone is manufactured by Abcam. If you require a custom buffer formulation or conjugation for your experiments, please contact orders@abcam.com.</p> <p>The Life Science industry has been in the grips of a reproducibility crisis for a number of years. Abcam is leading the way in addressing this with our range of recombinant monoclonal antibodies and knockout edited cell lines for gold-standard validation. Please check that this product meets your needs before purchasing.</p> <p>If you have any questions, special requirements or concerns, please send us an inquiry and/or contact our Support team ahead of purchase. Recommended alternatives for this product can be found below, along with publications, customer reviews and Q&As</p>

製品の特性

製品の状態	Liquid
保存方法	Shipped at 4°C. Upon delivery aliquot. Store at +4°C. Do Not Freeze.
バッファー	Constituent: PBS
キャリア・フリー	はい
精製度	Protein G purified

ポリ/モノ	モノクローナル
クローン名	93
アイソタイプ	IgG2a
軽鎖の種類	kappa

アプリケーション

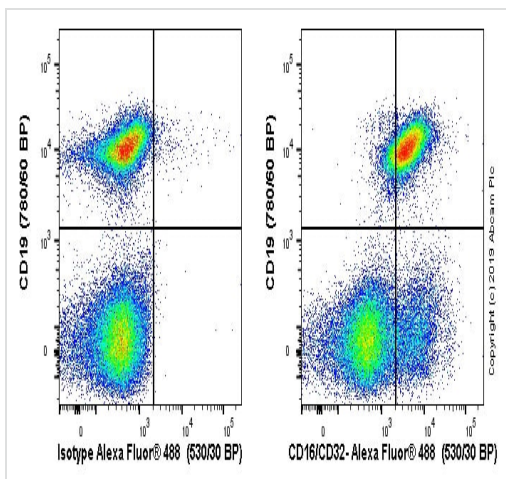
The Abpromise guarantee **Abpromise保証は、**次のテスト済みアプリケーションにおけるab25235の使用に適用されます
アプリケーションノートには、推奨の開始希釈率がありますが、適切な希釈率につきましてはご検討ください。

アプリケーション	Abreviews	特記事項
Flow Cyt		Use a concentration of 5 µg/ml. ab18536 - Rat monoclonal IgG2b, is suitable for use as an isotype control with this antibody.
Blocking		Use at an assay dependent concentration. ab25235 can be used for blocking of Fc gamma receptors.
ICC/IF		Use a concentration of 10 µg/ml.

ターゲット情報

関連性	Function: Binds to the Fc region of immunoglobulins gamma. Low affinity receptor. By binding to IgG it initiates cellular responses against pathogens and soluble antigens. Promotes phagocytosis of opsonized antigens. Tissue specificity: Found on monocytes, neutrophils and eosinophil platelets. Similarity: Contains 2 Ig-like C2-type (immunoglobulin-like) domains. PTM: Phosphorylated by SRC-type Tyr-kinases such as LYN, BLK, FYN, HCK and SYK.
細胞内局在	CD32: Type I membrane protein. CD16: Attached to the membrane by a GPI anchor. Exists also as a soluble receptor, produced by a proteolytic cleavage.

画像

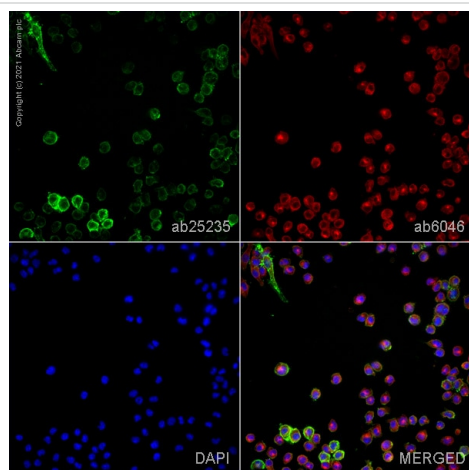


Flow Cytometry - Anti-CD16+CD32 antibody [93] - BSA and Azide free (ab25235)

C57BL/6 mouse splenocytes stained with ab25235 (right) or Rat IgG2ak (**ab18450**) isotype (left). C57BL/6 mouse splenocytes were incubated for 30 min on ice in PBS / 10 % mouse serum to block FC receptors and non-specific protein-protein interaction followed by the antibody (ab25235) or Rat IgG2ak (**ab18450**) (1×10^6 in 100 μ l at 5 μ g/ml) for 30 min on ice.

The secondary antibody Goat anti-rat IgG H&L (Alexa Fluor® 488, pre-adsorbed) (**ab150165**) was used at 1/2000 dilution for 30 min at 4°C. The cells were simultaneously stained with CD19 antibody. Acquisition of >30,000 events were collected using a 50 mW Blue laser (488nm) and 530/30 bandpass filter. Events were gated on viable lymphocytes.

This image was generated using the ascites version of the product.



Immunocytochemistry/ Immunofluorescence - Anti-CD16+CD32 antibody [93] - BSA and Azide free (ab25235)

ab25235 staining CD16 + CD32 in Raw264.7 cells. The cells were fixed with 4% paraformaldehyde (10 min), permeabilized with 0.1% PBS-Tween for 5 minutes and then blocked with 1% BSA/10% normal goat serum/0.3M glycine in 0.1%PBS-Tween for 1h. The cells were then incubated overnight at 4°C with ab25235 at 10 μ g/ml and **ab6046**, Rabbit polyclonal to beta Tubulin - Loading Control. Cells were then incubated with **ab150165**, Goat polyclonal Secondary Antibody to Rat IgG - H&L (Alexa Fluor® 488), pre-adsorbed at 1/1000 dilution (shown in green) and **ab150080**, Goat polyclonal Secondary Antibody to Rabbit IgG - H&L (Alexa Fluor® 594) at 1/1000 dilution (shown in pseudocolour red). Nuclear DNA was labelled with DAPI (shown in blue).

Image was acquired with a high-content analyser (Operetta CLS, Perkin Elmer) and a maximum intensity projection of confocal sections is shown.

Please note: All products are "FOR RESEARCH USE ONLY. NOT FOR USE IN DIAGNOSTIC PROCEDURES"

Our Abpromise to you: Quality guaranteed and expert technical support

- Replacement or refund for products not performing as stated on the datasheet
- Valid for 12 months from date of delivery
- Response to your inquiry within 24 hours
- We provide support in Chinese, English, French, German, Japanese and Spanish
- Extensive multi-media technical resources to help you
- We investigate all quality concerns to ensure our products perform to the highest standards

If the product does not perform as described on this datasheet, we will offer a refund or replacement. For full details of the Abpromise,

please visit <https://www.abcam.co.jp/abpromise> or contact our technical team.

Terms and conditions

- Guarantee only valid for products bought direct from Abcam or one of our authorized distributors